

**DCYF Annual Report 2006:
Tables and Figures for Selected Performance Indicators**

**Comprehensive Emergency Services (CES)
Family Preservation Services (FPP)
Project Early Start (PES)
Youth Diversionary Programs (YDP)
Outreach & Tracking Programs (O&T)
Residential Programs (RES)
Emergency Shelter Programs (SH)
Specialized Foster Care (SFC)
Children's Intensive Services (CIS)
Child and Adolescent Service System Project (CASSP)
Project HOPE (HOPE)
Parent Support Network (PSN)**

May 1, 2007

Table of Contents

Demographic Characteristics of Children and Families Served in All Programs.....	6
Comprehensive Emergency Services (CES).....	8
Family Preservation Programs (FPP).....	15
Project Early Start (PES)	20
Youth Diversionary Programs (YDP).....	28
Outreach and Tracking Services (O&T).....	34
Residential Services (RES).....	40
Emergency Shelter Services (SH).....	46
Specialized Foster Care (SFC).....	52
Children’s Intensive Services (CIS).....	60
Child & Adolescent Service System Program (CASSP)	67
Project HOPE.....	72
Parent Support Network (PSN).....	77

List of Tables and Figures

Table 1. Demographic Characteristics of Children and Families Served in FY06.....	7
 Comprehensive Emergency Services (CES)	
Figure 1. Gender of Children and Youth Served	9
Figure 2. Age Range of Children and Youth Served.....	9
Figure 3. Race and Ethnicity of Children and Youth Served	10
Figure 4. Primary Language Spoken at Home.....	10
Table 1. Ten Most Frequent Presenting Problems of Children and Youth Served.....	11
Table 2. Ten Most Frequent Presenting Problems of Families.....	11
Table 3. Discharge Reasons of Children and Youth Served and Discharged.....	12
Table 4. Discharge Placement of Children and Youth Served and Discharged	12
Table 5. Percent of Ratings in Each NCFAS Domain at Intake and Discharge	13
Figure 5. Percent of Families Showing Change in NCFAS Ratings	14
 Family Preservation Programs (FPP)	
Figure 1. Gender of Children and Youth Served	16
Figure 2. Age Range of Children and Youth Served.....	16
Figure 3. Race and Ethnicity of Children and Youth Served	17
Figure 4. Primary Language Spoken at Home.....	17
Table 1. Ten Most Frequent Presenting Problems of Children and Youth Served.....	18
Table 2. Ten Most Frequent Presenting Problems of Families.....	18
Table 3. Discharge Reasons of Children and Youth Served and Discharged.....	19
Table 4. Discharge Placement of Children and Youth Served and Discharged	19
 Project Early Start (PES)	
Figure 1. Gender of Children and Youth Served	21
Figure 2. Age Range of Children and Youth Served.....	21
Figure 3. Race and Ethnicity of Children and Youth Served	22
Figure 4. Primary Language Spoken at Home.....	22
Table 1. Ten Most Frequent Presenting Problems of Children and Youth Served.....	23
Table 2. Ten Most Frequent Presenting Problems of Families.....	23
Table 3. Discharge Reasons of Children and Youth Served and Discharged.....	24
Table 4. Discharge Placement of Children and Youth Served and Discharged	24
Table 5. Ages & Stages – Overall Baseline Assessment of Children Who Did and Did Not Meet the Age-Appropriate Developmental Milestones	25
Table 6. Ages & Stages – Subsample Comparison of Children Experiencing Changes in ASQ Domains	26
Table 7. Parental Role Performance on the Child Well-Being Scale – Comparison of Means and Standard Deviations at Annual Baseline Assessment and Annual Final Assessment.....	27
 Youth Diversionary Programs (YDP)	
Figure 1. Gender of Children and Youth Served	29
Figure 2. Age Range of Children and Youth Served.....	29
Figure 3. Race and Ethnicity of Children and Youth Served	30
Figure 4. Primary Language Spoken at Home.....	30

Table 1. Ten Most Frequent Presenting Problems of Children and Youth Served.....	31
Table 2. Ten Most Frequent Presenting Problems of Families.....	31
Table 3. Discharge Reasons of Children and Youth Served and Discharged.....	32
Table 4. Discharge Placement of Children and Youth Served and Discharged	32
Table 5. Child and Youth School Grades and Attendance	33
 Outreach and Tracking Services (O&T)	
Figure 1. Gender of Children and Youth Served.....	35
Figure 2. Age Range of Children and Youth Served.....	35
Figure 3. Race and Ethnicity of Children and Youth Served	36
Figure 4. Primary Language Spoken at Home.....	36
Table 1. Ten Most Frequent Presenting Problems of Children and Youth Served.....	37
Table 2. Ten Most Frequent Presenting Problems of Families.....	37
Table 3. Discharge Reasons of Children and Youth Served and Discharged.....	38
Table 4. Discharge Placement of Children and Youth Served and Discharged	38
Table 5. Child and Youth School Grades and Attendance	39
 Residential Services (RES)	
Figure 1. Gender of Children and Youth Served	41
Figure 2. Age Range of Children and Youth Served.....	41
Figure 3. Race and Ethnicity of Children and Youth Served	42
Figure 4. Primary Language Spoken at Home.....	42
Table 1. Ten Most Frequent Presenting Problems of Children and Youth Served.....	43
Table 2. Ten Most Frequent Presenting Problems of Families.....	43
Table 3. Discharge Reasons of Children and Youth Served and Discharged.....	44
Table 4. Discharge Placement of Children and Youth Served and Discharged	44
Table 5. Child and Youth School Grades and Attendance	45
Table 6. Children and Youth Average GAF Scores and Changes Over Time	45
 Emergency Shelter Services (SH)	
Figure 1. Gender of Children and Youth Served.....	47
Figure 2. Age Range of Children and Youth Served.....	47
Figure 3. Race and Ethnicity of Children and Youth Served	48
Figure 4. Primary Language Spoken at Home.....	48
Table 1. Ten Most Frequent Presenting Problems of Children and Youth Served.....	49
Table 2. Ten Most Frequent Presenting Problems of Families.....	49
Table 3. Discharge Reasons of Children and Youth Served and Discharged.....	50
Table 4. Discharge Placement of Children and Youth Served and Discharged	50
Table 5. Child and Youth School Attendance	51
Table 6. Children and Youth Average GAF Scores and Changes Over Time	51
 Specialized Foster Care (SFC)	
Figure 1. Gender of Children and Youth Served	53
Figure 2. Age Range of Children and Youth Served.....	53
Figure 3. Race and Ethnicity of Children and Youth Served	54
Figure 4. Primary Language Spoken at Home.....	54
Table 1. Ten Most Frequent Presenting Problems of Children and Youth Served.....	55
Table 2. Ten Most Frequent Presenting Problems of Families.....	55
Table 3. Discharge Reasons of Children and Youth Served and Discharged.....	56
Table 4. Discharge Placement of Children and Youth Served and Discharged	56

Table 5. Child and Youth School Grades and Attendance	57
Table 6. Children and Youth Average GAF Scores and Changes Over Time	57
Table 7. Ages & Stages – Overall Baseline Annual Assessment Comparison of Children Who Did and Did Not Meet the Age-Appropriate Developmental Milestones	58
Table 8. Ages & Stages – Subsample Comparison of Children Experiencing Changes in ASQ Domains	59

Children’s Intensive Services (CIS)

Figure 1. Gender of Children and Youth Served	61
Figure 2. Age Range of Children and Youth Served	61
Figure 3. Race and Ethnicity of Children and Youth Served	62
Table 1. Frequency of Axis IV Diagnoses	63
Table 2. Discharge Status of Children and Youth Served	63
Table 3. Discharge Referral of Children and Youth Served and Discharged	64
Table 4. Discharge Placement (Combines Old Discharge Values)	64
Table 5. Children and Youth’s M-CGAS Scores and Changes Over Time	65
Table 6. Children and Youth Ohio Scale Functioning and Changes Over Time	65
Table 7. Children and Youth Ohio Problem Symptoms and Changes Over Time	66

Child & Adolescent Service System Program (CASSP)

Figure 1. Gender of Children and Youth Served	68
Figure 2. Age Range of Children and Youth Served	68
Figure 3. Race and Ethnicity of Children and Youth Served	69
Figure 4. Primary Language Spoken at Home	69
Table 1. Ten Most Frequent Presenting Problems of Children and Youth Served	70
Table 2. Discharge Reasons of Children and Youth Served and Discharged	71
Table 3. Discharge Placement of Children and Youth Served and Discharged	71

Project HOPE

Figure 1. Gender of Children and Youth Served	73
Figure 2. Age Range of Children and Youth Served	73
Figure 3. Race and Ethnicity of Children and Youth Served	74
Figure 4. Primary Language Spoken at Home	74
Table 1. Ten Most Frequent Presenting Problems of Children and Youth Served	75
Table 2. Discharge Reasons of Children and Youth Served and Discharged	76
Table 3. Discharge Placement of Children and Youth Served and Discharged	76

Parent Support Network (PSN)

Figure 1. Gender of Children and Youth Served	78
Figure 2. Age Range of Children and Youth Served	78
Figure 3. Race and Ethnicity of Children and Youth Served	79
Figure 4. Primary Language Spoken at Home	79
Table 1. Ten Most Frequent Presenting Problems of Children and Youth Served	80
Table 2. Number and Percentage of Discharged Children and Youth	80

**Demographic Characteristics
of Children and Families Served in All Programs**

Table 1. Demographic Characteristics of Children and Families Served in FY06

		CES N= 2,527		FPP N= 300		PES N=527		YDP N=358		O&T N=1149		RES N=1,337		SH N=794		SFC N=290		CIS N=2881		CASSP N=1717		HOPE N=310		PSN N=675	
		N	%	N	%	N	%	N	%	N	%	N	%	N	%	N	%	N	%	N	%	N	%	N	%
Gender	Male	1314	52	160	53	305	58	182	51	659	57	858	64	326	41	139	48	1665	59	1099	66	239	78	416	62
	Female	1213	48	140	47	222	42	176	49	490	43	479	36	468	59	151	52	1177	41	572	34	66	22	258	38
Age Range	0-5 years	941	37	191	64	527	100	0	0	7	1	6	1	91	12	90	33	447	16	176	11	9	3	109	16
	6-11 years	809	32	77	26	0	0	19	5	48	4	140	11	85	11	76	28	1039	37	607	38	39	14	209	31
	12-15 years	530	21	25	8	0	0	234	65	591	51	475	36	386	50	60	22	1057	37	518	33	71	25	210	31
	16-18years	217	9	7	2	0	0	105	29	483	42	581	44	209	27	37	14	305	11	263	17	151	54	107	16
	19 + years	30	1	0	0	0	0	0	0	20	2	121	9	7	1	9	3	0	0	17	1	12	4	5	1
Race/Ethnicity	African American/Black	358	14	53	18	64	12	10	3	195	17	250	19	152	19	49	17	255	9	194	11	69	23	65	10
	Amer. Indian/Alaskan Native	24	1	0	0	6	1	4	1	6	1	18	1	12	2	2	1	28	1	28	2	8	3	2	<1
	Asian/Pacific Islander	40	2	0	0	77	15	15	4	30	3	29	2	17	2	2	1	22	1	13	1	9	3	3	<1
	Biracial	98	4	49	16	42	7	5	1	30	3	39	3	20	3	11	4	190	6	117	7	5	4	110	16
	Caucasian/White	1307	52	123	41	187	35	203	57	546	48	753	56	388	49	183	63	1495	50	971	57	99	32	354	52
	Hispanic	595	24	24	8	151	29	82	23	243	21	176	13	105	13	9	3	688	24	317	19	108	35	141	21
	Unknown/Other	105	4	51	17	0	0	39	11	99	9	72	5	100	13	34	12	0	0	77	5	11	4	0	0
Primary Language*	English	1934	77	255	85	323	61	297	83	909	79	642	86	527	89	112	95	-	-	1411	87	212	74	572	85
	Spanish	461	18	43	14	111	21	45	13	155	13	73	10	57	10	6	5	-	-	148	9	62	22	102	15
	Portuguese	27	1	0	0	3	1	0	0	6	1	2	<1	2	<1	0	0	-	-	12	1	2	1	0	0
	Hmong	0	0	0	0	38	7	1	<1	3	<1	3	<1	4	1	0	0	-	-	1	<1	1	<1	0	0
	Chinese	8	<1	0	0	0	0	0	0	2	<1	0	0	0	0	0	0	-	-	1	<1	1	<1	0	0
	Creole	71	3	0	0	14	3	3	0	31	3	10	1	2	<1	0	0	-	-	33	2	2	1	0	0
	Russian	0	0	0	0	0	0	0	0	0	0	0	0	0	0	0	0	-	-	1	<1	0	0	0	0
	French	3	<1	0	0	0	0	0	0	0	0	1	<1	0	0	0	0	-	-	1	<1	0	0	0	0
	Kmer	7	<1	0	0	35	7	6	2	9	1	7	1	0	0	0	0	-	-	0	0	0	0	0	0
Other	16	1	1	1	3	1	6	2	34	3	7	1	2	<1	0	0	-	-	7	<1	5	2	1	<1	

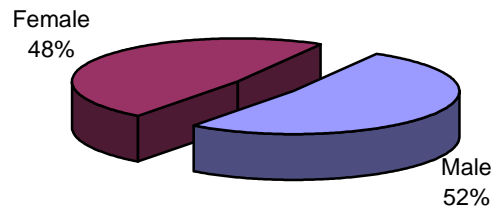
Note: Valid percents are reported. Percents may not equal 100 due to rounding error. Gender was missing for the following providers, CIS (n=39, 1.4%) CASSP (n=46, 2.7%) and HOPE (n=5, 1.6).

Age ranges were missing for the following providers, RES (n=14, 1%), SH (n=16, 2.0%), SFC (n=18, 6.2%), CIS (n=33, 1.1.0%), CASSP (n=136, 7.9%) and HOPE (n=28, 9%).

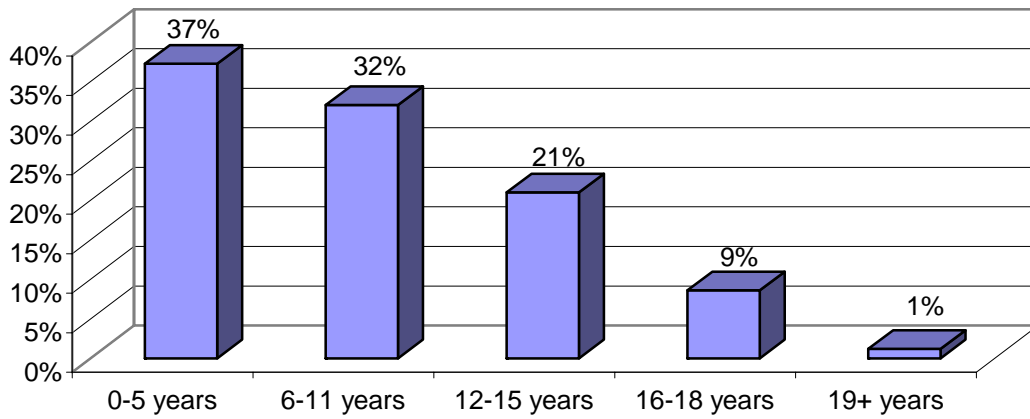
*Primary language represents new admissions only. Primary Language not collected for CIS.

Comprehensive Emergency Services (CES)

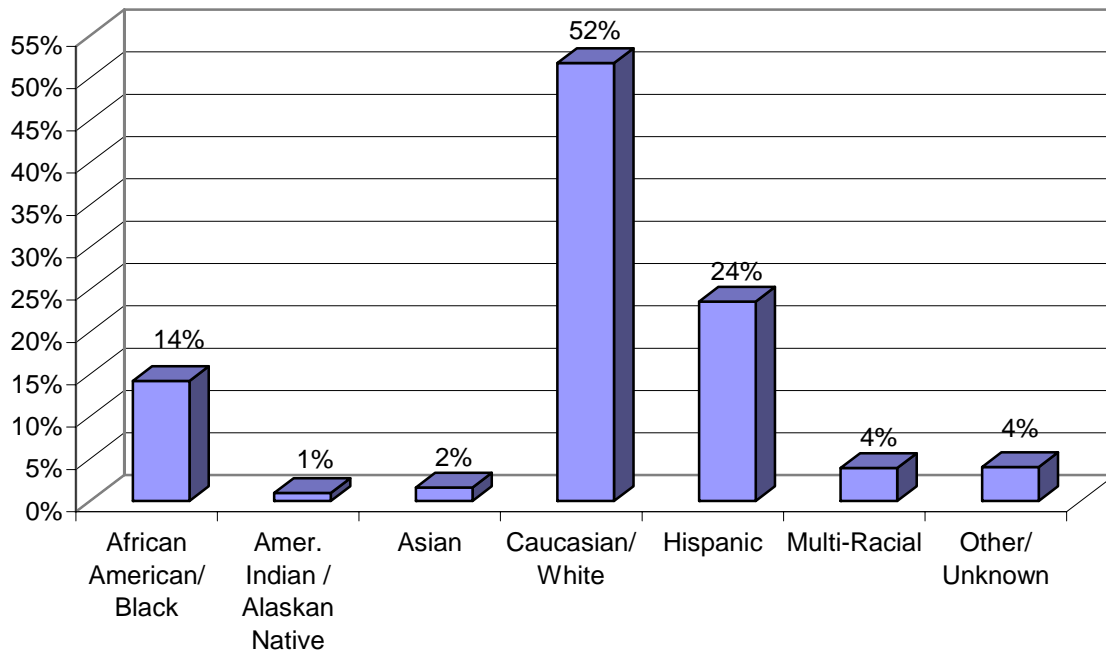
CES Figure 1. Gender of Children and Youth Served (n =2,527)



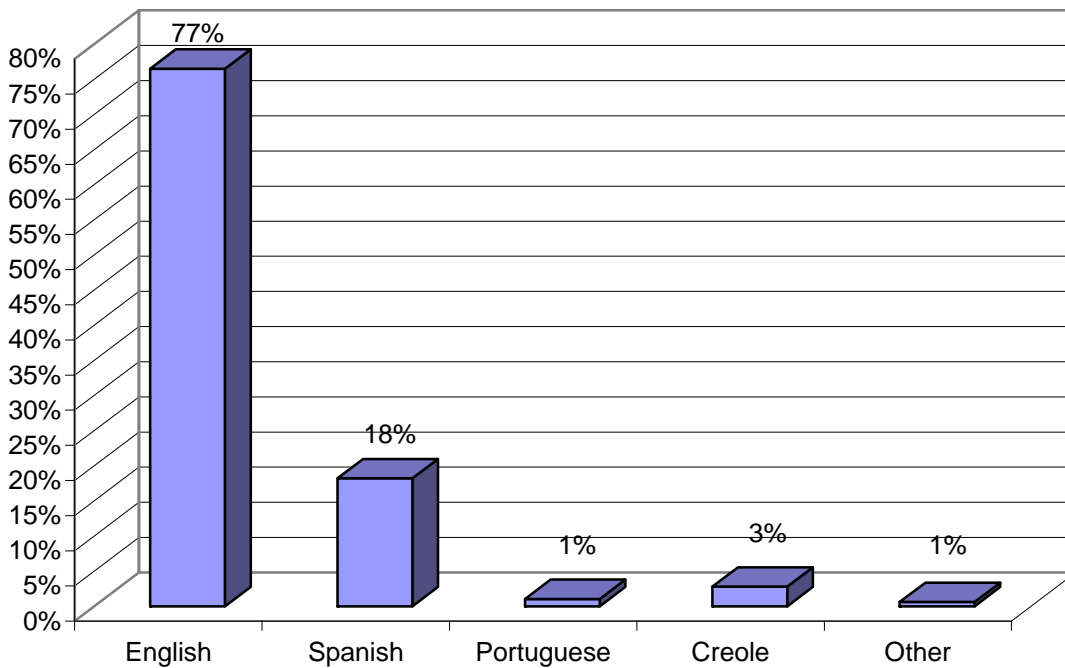
CES Figure 2. Age Range of Children and Youth Served (n=2,527)



CES Figure 3. Race and Ethnicity of Children and Youth Served (n=2,527)



CES Figure 4. Primary Language Spoken at Home (n=2,527)



CES Table 1. Ten Most Frequent Presenting Problems of Children and Youth Served (n=2,085)

	Child Presenting Problems	Percent
1	Family Violence/Stress	51
2	Behavioral Problems	35
3	Relationship Problems	22
4	School Problems	18
5	Anger/Aggression	17
6	Mental Health Problem	16
7	Abuse-Emotional	11
8	Out of Parental Control	11
9	Abuse-Physical	9
10	Neglect	9

Note: Valid percents reported; Cumulative percents exceed 100%, as multiple problems may be present.

CES Table 2. Ten Most Frequent Presenting Problems of Families (n=985)

	Family Presenting Problems	Percent
1	Family Stress	67
2	Parenting Problems	62
3	Behavioral Problems	43
4	Mental Health Problems	41
5	Financial Problem/Unemployment	36
6	Housing Issues	27
7	School Problems	26
8	Access to Services	22
9	History of Physical/Sexual Violence	21
10	Health Problem/Disability	17

Note: Valid percents reported; Cumulative percents exceed 100%, as multiple problems may be present.

CES Table 3. Discharge Reasons of Children and Youth Served and Discharged (n=2,527)

Discharge Reasons	N	%
Children Discharged	2,336	92
5/10 Days Notice	0	0
Adjudicated/Re-Offended	5	<1
Child Aged Out of Program	0	0
Court Ordered	1	<1
Goals Accomplished	1,260	54
Left Without Notice/AMA/AWOL	163	7
Moved Out of State/Area	39	2
Refused Services	115	5
Time-Limit Reached	485	21
Other	268	11

Note: Valid percents reported.

CES Table 4. Discharge Placement of Children and Youth Served and Discharged (n=2,527)

Discharge Placement	N	%
Children Discharged	2,336	92
Adult Corrections	0	0
CIS	56	2
DCYF-DAS Evaluation	5	<1
DCYF- Foster Care	25	1
Emancipation/Adoption	0	0
Family Court	0	0
Group Home	2	<1
Home- Parent/ Guardian	1,630	70
Home- Relatives	438	19
Job Corps	0	0
More Intensive Program	91	4
Mental Health Services	56	2
Psychiatric Hospitalization	0	0
Residential Placement	1	<1
Shelter	8	<1
Specialized Foster Care	0	0
Supervised Ind. Living	0	0
Training School (RITS)	0	0
Other	24	1

Note: Valid percents reported.

Child and Family Outcomes

Child and family outcomes are assessed using the North Carolina Family Assessment Scale, or NCFAS. The NCFAS is administered at intake and discharge and assesses five domains of family functioning. The *home environment* domain refers to housing stability and habitability, community safety, income/employment, financial management, food and nutrition, personal hygiene, transportation, and the learning environment. The *parenting capabilities* domain involves supervision of children, disciplinary practices, provision of developmental/enrichment opportunities, parent/caregiver mental health, parent/caregiver physical health, and parent/caregiver use of drugs/alcohol. The *family interactions* domain includes bonding with children, expectations of the children, mutual support within the family, and the relationship between parents/caregivers. The *family safety* domain refers to the presence of child abuse (physical, sexual, emotional), the presence of child neglect, and the presence of domestic violence between parents/caregivers. Finally, the *child well-being* domain includes children’s mental health and behavior, their school performance, their relationships with parents, siblings, and peers, and their cooperation/motivation to maintain family ties.

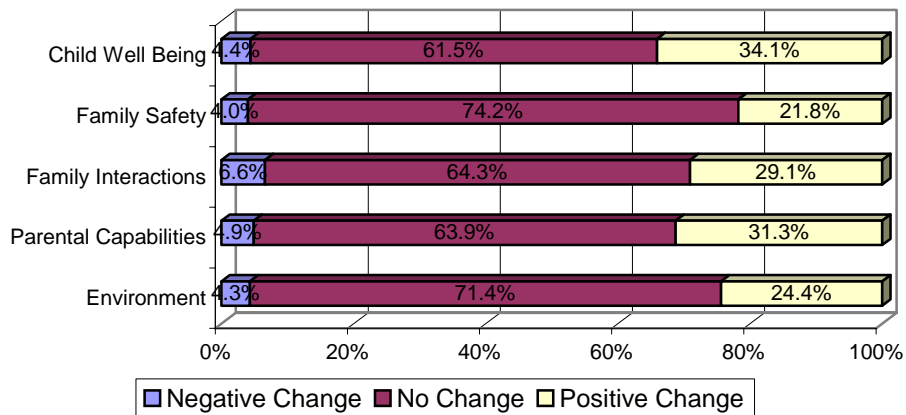
Families are rated in each domain using a 6-point scale ranging from –3 (“serious problem”) to +2 (“clear strength”). A comparison of the ratings from the intake and discharge assessments shows changes over time. As shown in Table 5, there is a consistent movement from problems to strengths across all domains from intake to discharge, indicating that families are improving following the provision of CES.

CES Table 5. Percent of ratings in each NCFAS domain at intake and discharge (n=773)

	Serious Problem (-3)	Moderate Problem (-2)	Mild Problem (-1)	Baseline / Adequate (0)	Mild Strength (+1)	Clear Strength (+2)
Home Environment						
<i>Intake</i>	2.9	5.6	13.7	37.2	24.3	16.3
<i>Discharge</i>	1.3	4.3	10.1	32.1	32.1	20.0
Parental Capabilities						
<i>Intake</i>	1.7	6.0	18.7	46.0	20.1	7.6
<i>Discharge</i>	1.0	4.3	12.7	39.2	30.8	11.8
Family Interactions						
<i>Intake</i>	1.7	8.1	18.8	43.0	19.0	9.3
<i>Discharge</i>	1.3	5.2	15.5	37.6	28.3	12.0
Family Safety						
<i>Intake</i>	1.6	3.1	9.9	44.8	21.3	19.3
<i>Discharge</i>	0.7	2.8	6.3	40.6	26.2	23.5
Child Well-Being						
<i>Intake</i>	2.8	8.2	22.9	45.0	15.8	5.3
<i>Discharge</i>	1.3	6.2	17.9	36.6	29.2	8.7

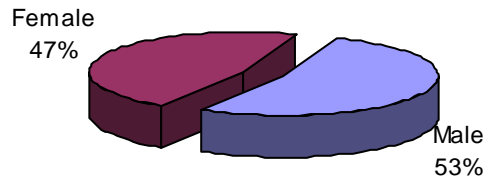
Figure 5 below depicts the amount of positive, negative, and no change that is found from intake to discharge for all domains. Although a majority of families show no significant change over time, significant positive changes are found in all domains, ranging from 21.8 percent to 34.1 percent. In addition, relatively few families (4.3% to 6.6%) show negative changes from intake to discharge following receipt of CES.

CES Figure 5. Percent of Families Showing Change in NCFAS Ratings (n=21)

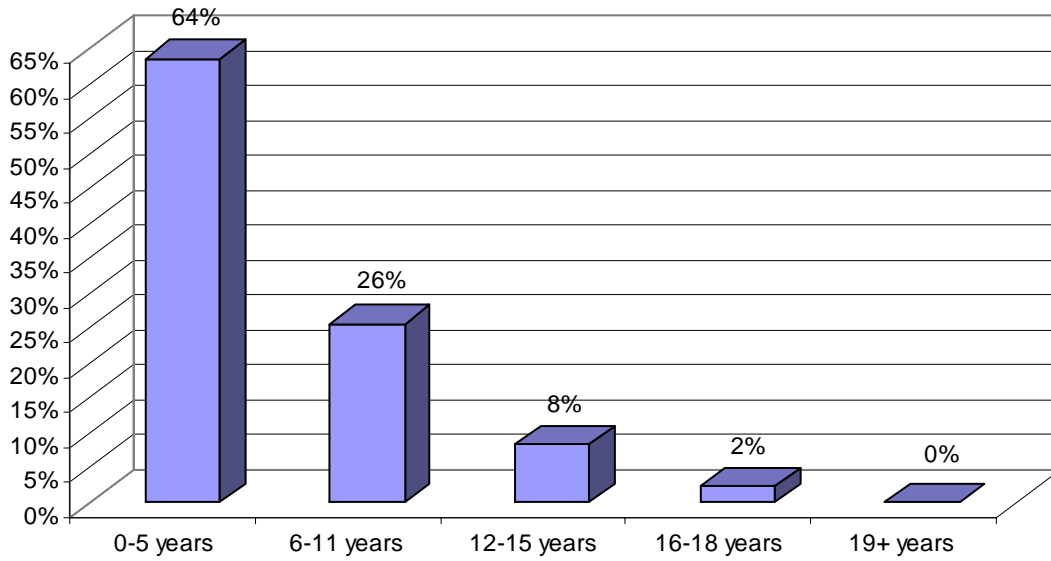


Family Preservation Programs (FPP)

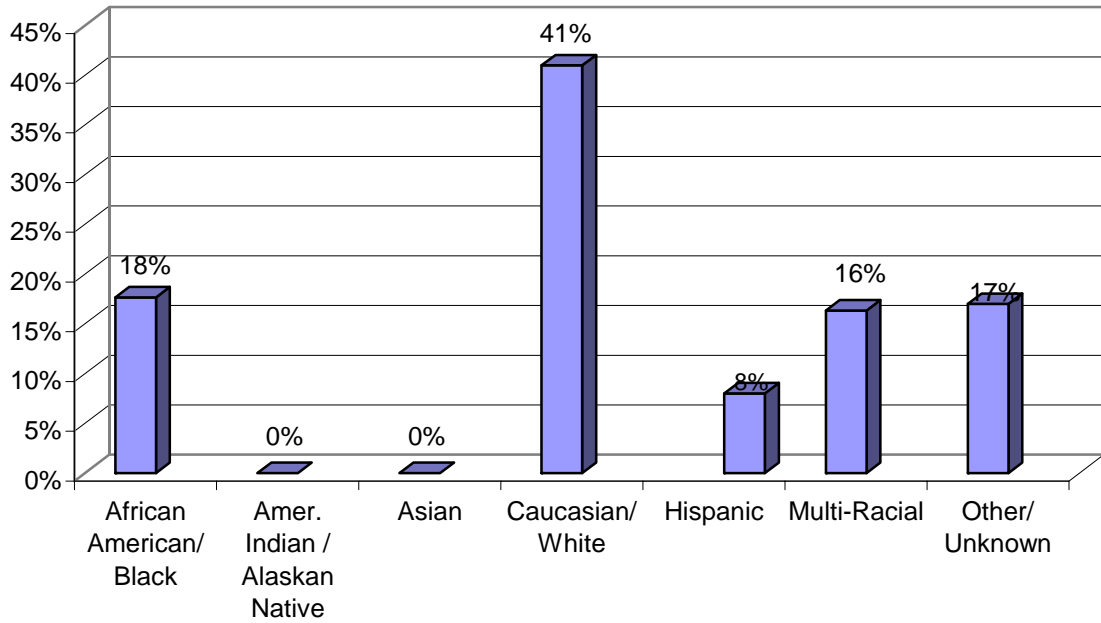
FPP Figure 1. Gender of Children and Youth Served (n=300)



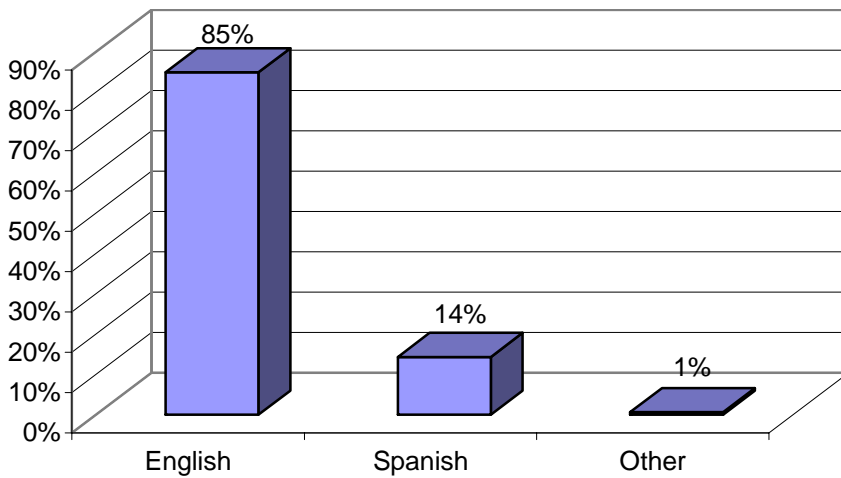
FPP Figure 2. Age Range of Children and Youth Served (n=300)



FPP Figure 3. Race and Ethnicity of Children and Youth Served (n=300)



FPP Figure 4. Primary Language Spoken at Home (n=300)



FPP Table 1. Ten Most Frequent Presenting Problems of Children and Youth Served (n=185)

	Child Presenting Problems	Percent
1	Neglect	68
2	Family Violence/Stress	50
3	Behavioral Problems	17
4	Prenatal Drug Exposure	17
5	Developmental Delay	14
6	Mental Health Problem	10
7	Developmental Problem	10
8	Grief and Loss	9
9	School Problems	8
10	Anger/Aggression	7

Note: Valid percents reported; Cumulative percents exceed 100%, as multiple problems may be present.

FPP Table 2. Ten Most Frequent Presenting Problems of Families (n=135)

	Family Presenting Problems	Percent
1	Alcohol/Drug Abuse	59
2	Neglect	55
3	Financial Problem/Unemployment	47
4	Family Stress	46
5	Parenting Problems	37
6	Transportation Needs	34
7	Mental Health Problem	32
8	Housing Issues	31
9	History of Physical/Sexual Abuse	17
10	School Problems	17

Note: Valid percents reported; Cumulative percents exceed 100%, as multiple problems may be present.

FPP Table 3. Discharge Reasons of Children and Youth Served and Discharged (n=300)

Discharge Reasons	N	%
Children Discharged	157	52
5/10 Days Notice	0	0
Adjudicated/Re-Offended	0	0
Child Aged Out of Program	0	0
Court Ordered	19	12
Goals Accomplished	51	32
Left Without Notice/AMA/AWOL	10	6
Moved Out of State/Area	6	4
Refused Services	36	23
Time-Limit Reached	1	1
Other	34	22

Note: Valid percents reported.

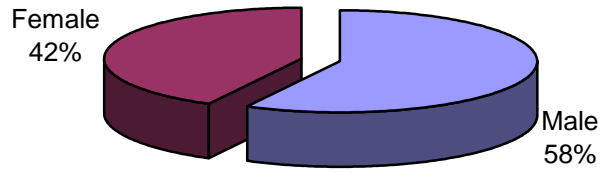
FPP Table 4. Discharge Placement of Children and Youth Served and Discharged (n=300)

Discharge Placement	N	%
Children Discharged	157	52
Adult Corrections	0	0
CIS	0	0
DCYF-DAS Evaluation	0	0
DCYF- Foster Care	35	22
Emancipation/Adoption	4	3
Family Court	0	0
Group Home	0	0
Home- Parent/ Guardian	109	69
Home- Relatives	8	5
Job Corps	0	0
More Intensive Program	0	0
Mental Health Services	0	0
Psychiatric Hospitalization	0	0
Residential Placement	0	0
Shelter	0	0
Specialized Foster Care	0	0
Supervised Ind. Living	0	0
Training School (RITS)	1	1
Other	0	0

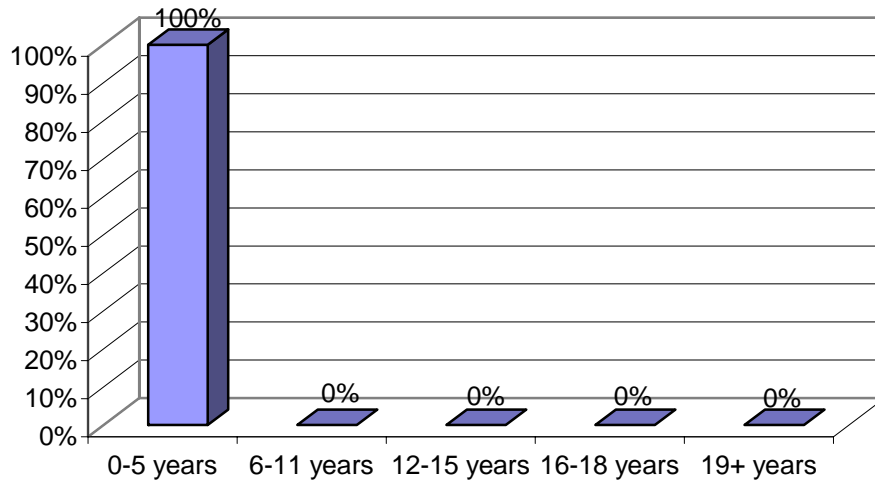
Note: Valid percents reported.

Project Early Start (PES)

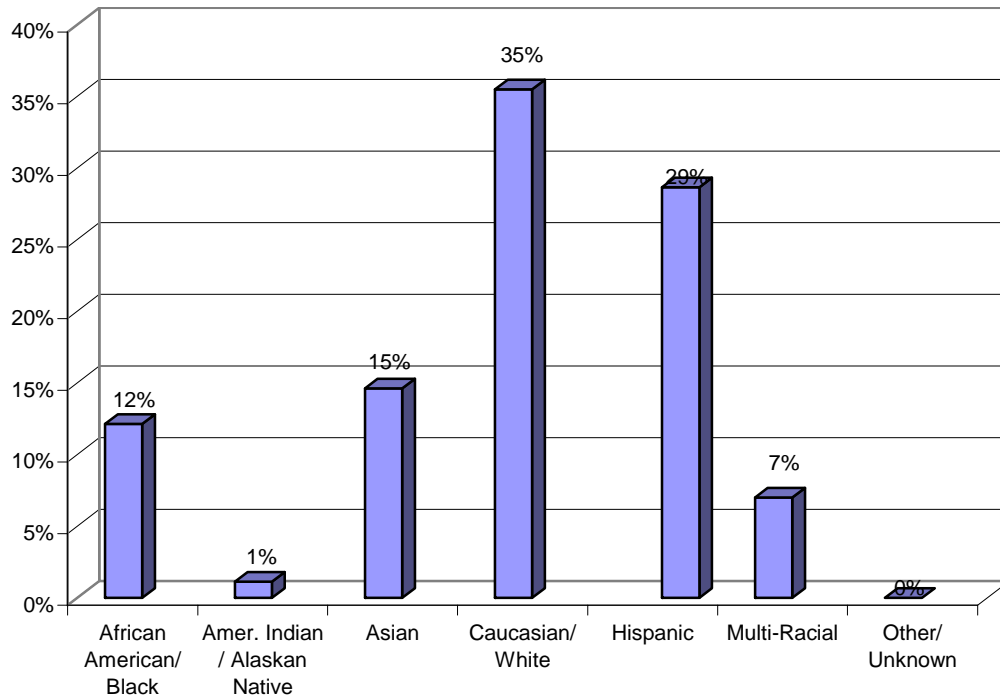
PES Figure 1. Gender of Children and Youth Served (n=527)



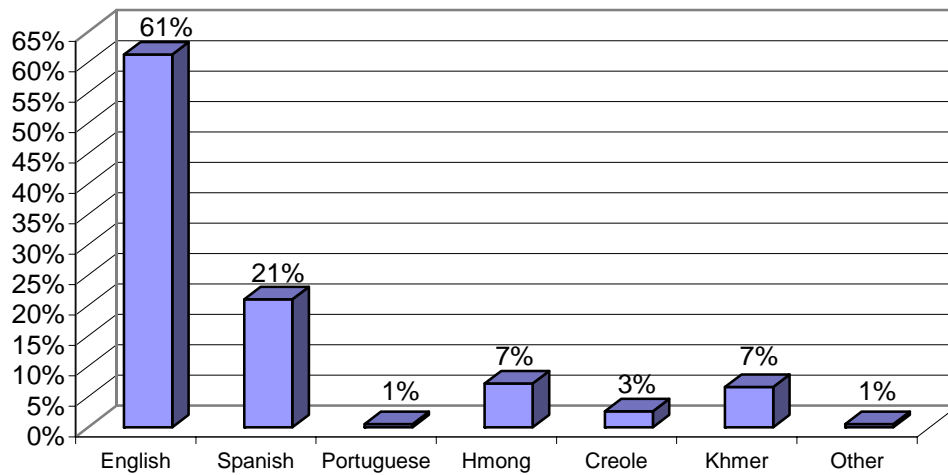
PES Figure 2. Age Range of Children and Youth Served (n=527)



PES Figure 3. Race and Ethnicity of Children Served (n=527)



PES Figure 4. Primary Language Spoken at Home (n=527)



PES Table 1. Ten Most Frequent Presenting Problems of Children and Youth Served (n=249)

	Child Presenting Problems	Percent
1	Family Violence/Stress	38
2	Other Presenting Problems	22
3	Developmental Problems	20
4	Developmental Delay	18
5	Behavioral Problems	17
6	Relationship Problems	11
7	Language/Speech Disorder	10
8	Health Problem/Disability	8
9	Anger/Aggression	5
10	Neglect	5

Note: Valid percents reported; Cumulative percents exceed 100%, as multiple problems may be present.

PES Table 2. Ten Most Frequent Presenting Problems of Families (n=249)

	Family Presenting Problems	Percent
1	Family Violence/Stress	62
2	Financial Problems	54
3	Social Isolation	34
4	Housing Issues	33
5	Transportation Needs	33
6	Child Care Needs	32
7	Mental Health Problem	28
8	Unsafe Neighborhood/Home	24
9	Recreational Needs	23
10	Cultural/Language Barriers	22

Note: Valid percents reported; Cumulative percents exceed 100%, as multiple problems may be present.

PES Table 3. Discharge Reasons of Children and Youth Served and Discharged (n=527)

Discharge Reasons	N	%
Children Discharged	246	47
5/10 Days Notice	1	<1
Adjudicated/Re-Offended	0	0
Child Aged Out of Program	36	15
Court Ordered	1	0
Goals Accomplished	72	29
Left Without Notice/AMA/AWOL	25	10
Moved Out of State/Area	33	13
Refused Services	42	17
Time-Limit Reached	5	2
Other	31	13

Note: Valid percents reported.

PES Table 4. Discharge Placement of Children and Youth Served and Discharged (n=527)

Discharge Placement	N	%
Children Discharged	246	47
Adult Corrections	0	0
CIS	0	0
DCYF-DAS Evaluation	5	2
DCYF- Foster Care	8	3
Emancipation/Adoption	0	0
Family Court	0	0
Group Home	9	4
Home- Parent/Guardian	212	86
Home- Relatives	2	1
Job Corps	0	0
More Intensive Program	2	1
Mental Health Services	0	0
Psychiatric Hospitalization	2	1
Residential Placement	0	0
Shelter	2	1
Specialized Foster Care	0	0
Supervised Ind. Living	0	0
Training School (RITS)	0	0
Other	6	2

Note: Valid percents reported.

Child and Youth Outcomes

Developmental Outcomes

Children’s developmental outcomes were assessed using the Ages & Stages Questionnaire (ASQ). This is completed in conjunction with the parent/caregiver and provides developmental information on a variety of children’s skills, such as: communication, gross motor, fine motor, problem solving, and personal-social. Table 5 below shows the extent to which children did or did not meet age-appropriate developmental milestones upon entry into PES. As shown, 8.1 to 20.3 percent of children did not meet milestones in at least one area of development when they entered PES.

PES Table 5. Ages & Stages -- Overall Baseline Assessments of Children Who Did and Did Not Meet the Age-Appropriate Developmental Milestones (n=395)

	Overall Baseline Annual Assessment			
	Children Who Did Not Meet Their Age-Appropriate Developmental Milestones		Children Who Did Meet Their Age-Appropriate Developmental Milestones	
	Valid Percents	N	Valid Percents	N
Communication	20.3	80	79.7	315
Gross Motor	7.3	29	92.7	366
Fine Motor	9.9	39	90.1	355
Problem Solving	9.4	37	90.6	358
Personal-Social	8.1	32	91.9	363

Note: Missing Data for the following Milestone: Fine Motor (n=1, <1%),

Table 6 below shows the extent to which those children who were discharged from PES and completed the Ages & Stages Questionnaire did or did not meet specific developmental milestones. Since not all children had completed the program, this represents a subsample of all children and families served. As is shown in Table 6, the great majority of children sustained developmental gains they had demonstrated at the baseline assessment (75.2% to 90.8%). In addition, meaningful percentages of children met new developmental milestones at the final assessment after not having met those milestones at the baseline assessment (6.0% out of 14.7%, 3.2% out of 6.0%, 7.4% out of 10.6%, 4.7% out of 8.5%, and 4.6% out of 6.9%). However, a significant percentage of children remained at sub-typical development at the final assessment (ranging from 2.3% to 8.7%), and a small percentage of children lost developmental gains observed at baseline (ranging from 3.2% to 10.1%). Overall, children were found to be challenged most in meeting developmental milestones for communication skills at both the baseline and final assessment, and least challenged by meeting milestones for gross motor skills.

PES Table 6. Ages & Stages – Subsample Comparison of Children Experiencing Changes in ASQ Domains (n=218)

	Subsample of Overall Sample: Includes All Cases that have a Baseline Annual Assessment and a Final Annual Assessment					
	Percent of Children Who <i>Did Not</i> Meet Their Age-Appropriate Developmental Milestones at the Annual Baseline Assessment			Percent of Children Who <i>Did</i> Meet Age-Appropriate Developmental Milestones at the Annual Baseline Assessment		
	Annual Baseline Assessment	Final Annual Assessment*		Annual Baseline Assessment	Final Annual Assessment*	
		Met New Developmental Milestones	Remained at Sub-typical development		Sustained Developmental Gains	Lost Developmental Gains
Communication	14.7	6.0	8.7	85.3	75.2	10.1
Gross Motor	6.0	3.2	2.8	94.0	90.8	3.2
Fine Motor	10.6	7.4	3.2	89.4	83.8	5.6
Problem Solving	8.5	4.7	3.8	91.6	86.9	4.7
Personal-Social	6.9	4.6	2.3	93.1	87.1	6.0

Note: Missing Data for the following Milestones: Fine Motor (n=2, 1.0%), Problem Solving (n=5, 2.3%) Personal-Social (n=1, 0.4%)

Parental Role Performance

Parental role performance is assessed using Child Well-Being Scales. Four subscales are assessed: parental acceptance of/affection for children, parental approval of children, parental consistency of discipline, and parental teaching/stimulating of children. The mean average of all subscales is then used to compute a total composite score for the emotional care of children, with higher scores indicating higher role performance. Parental responses are assessed using six levels of performance, ranging from “adequate” to “several inadequate” with the highest score possible being 100. Scores were available for 65-71 of 249 parents (26-29%, depending on the subscale) who had completed the program and both assessments. As shown in Table 7 on the following page, parental role performance improved for each subscale, with statistically significant improvements found in parent’s approval of their child, expectations of their child, teaching/stimulation of their child, and their overall composite score. These scores indicate that parental role performance improves following receipt of PES.

PES Table 7: Parental Role Performance on the Child Well-Being Scale - Comparison of Means and Standard Deviations at Annual Baseline Assessment and Annual Final Assessment

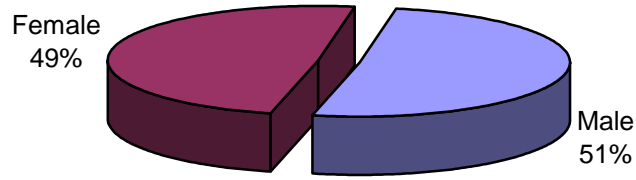
Scales	N	Annual Baseline Assessment		Final Annual Assessment	
		Mean	SD	Mean	SD
Parental Acceptance of / Affection for Children	71	89.93	14.94	90.85	15.26
Parental Approval of Children**	69	87.38	12.06	90.68	11.06
Parental Expectations of Children**	70	88.20	13.39	91.29	10.72
Parental Consistency of Discipline	67	89.87	11.39	90.00	10.35
Parental Teaching / Stimulating of Children**	69	89.19	11.17	92.38	8.42
Total Composite Score for The Emotional Care of Children*	65	88.51	10.86	90.58	8.88

* p < .05 level ** p < .01 level

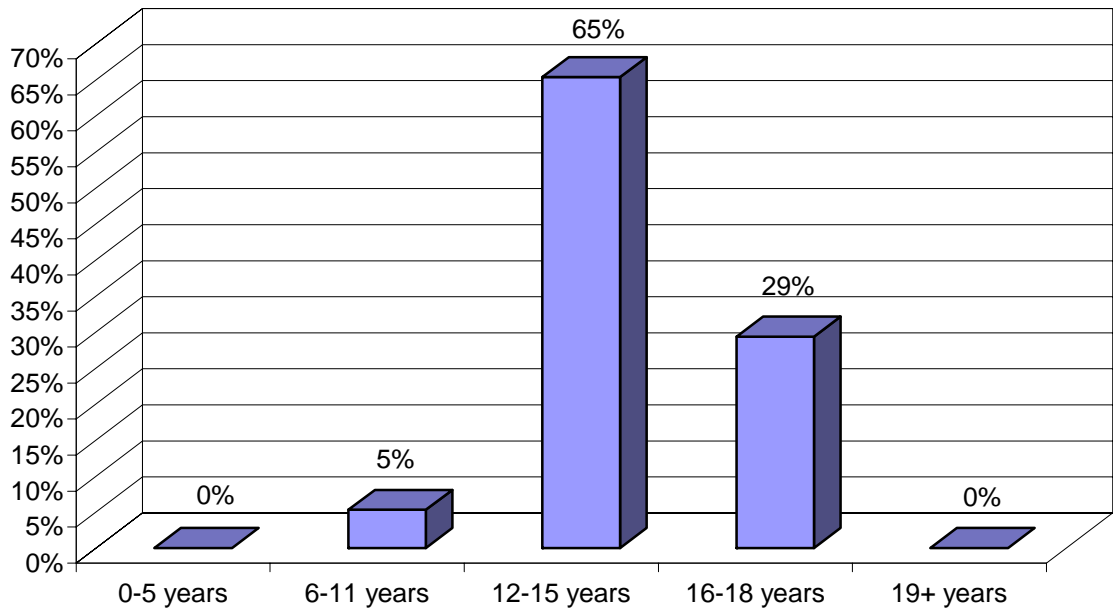
Note: High mean scores indicate high role performance

Youth Diversionary Programs (YDP)

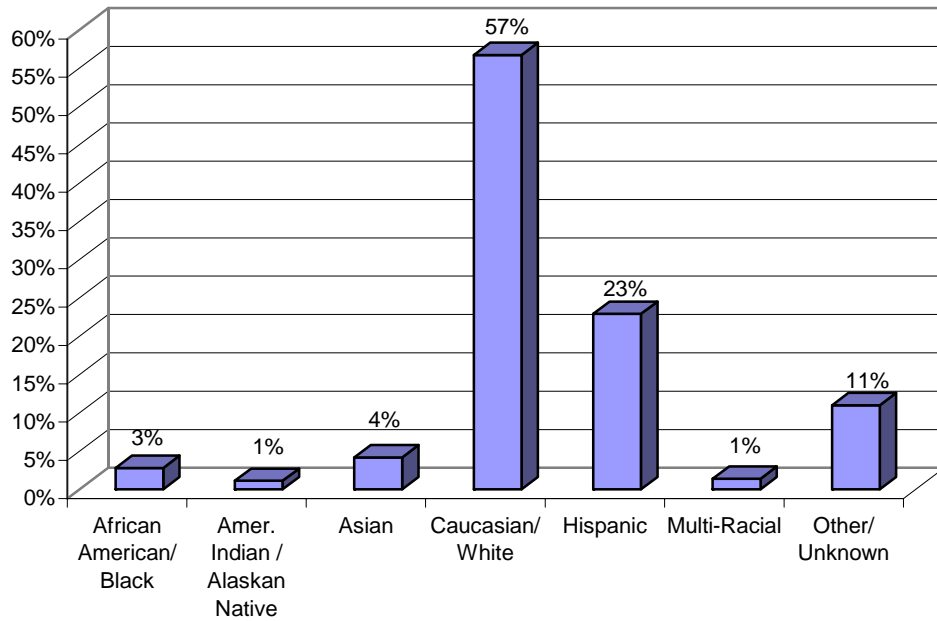
YDP Figure 1. Gender of Children and Youth Served (n=358)



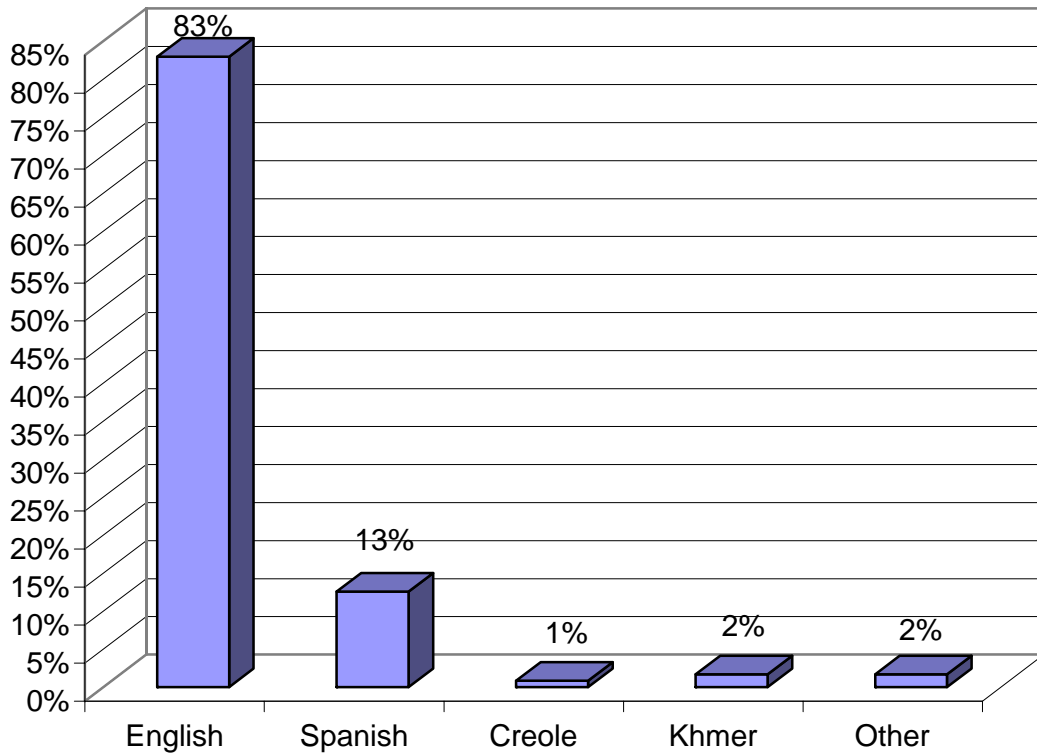
YDP Figure 2. Age Range of Children and Youth Served (n=358)



YDP Figure 3. Race and Ethnicity of Children and Youth Served (n=358)



YDP Figure 4. Primary Language Spoken at Home (n=358)



YDP Table 1. Ten Most Frequent Presenting Problems of Children and Youth Served (n=262)

	Child Presenting Problems	Percent
1	School Problems	64
2	Behavioral Problems	45
3	Mental Health Problems	34
4	Family Violence/Stress	28
5	Anger/Aggression	27
6	Criminal/Illegal Activity	24
7	Out of Parental Control	14
8	Delinquency	12
9	Depression/Withdrawal	12
10	Alcohol/ Drug Abuse	9

Note: Valid percents reported; Cumulative percents exceed 100%, as multiple problems may be present.

YDP Table 2. Ten Most Frequent Presenting Problems of Families (n=225)

	Family Presenting Problems	Percent
1	School Problems	52
2	Family Stress	48
3	Mental Health Problem	42
4	Parenting Problem	40
5	Behavioral Problem	33
6	Criminal Involvement	17
7	Financial Problem/Unemployment	15
8	Alcohol/Drug Abuse	11
9	Other Presenting Problems	7
10	Access to Services	7

Note: Valid percents reported; Cumulative percents exceed 100%, as multiple problems may be present.

YDP Table 3. Discharge Reasons of Children and Youth Served and Discharged (n=358)

Discharge Reasons	N	%
Children Discharged	294	82
5/10 Days Notice	0	0
Adjudicated/Re-Offended	3	1
Child Aged Out of Program	0	0
Court Ordered	4	1
Goals Accomplished	117	40
Left Without Notice/AMA/AWOL	1	<1
Moved Out of State/Area	6	2
Refused Services	48	16
Time-Limit Reached	43	15
Other	72	24

Note: Valid percents reported.

YDP: Discharge Placement of Children and Youth Served and Discharged (n=358)

Discharge Placement	N	%
Children Discharged	294	82
Adult Corrections	0	0
CIS	16	5
DCYF-DAS Evaluation	2	1
DCYF- Foster Care	2	1
Emancipation/Adoption	0	0
Family Court	1	<1
Group Home	0	0
Home- Parent/Guardian	255	87
Home- Relatives	5	2
Job Corps	0	0
More Intensive Program	1	<1
Mental Health Services	5	2
Psychiatric Hospitalization	0	0
Residential Placement	1	<1
Shelter	0	0
Specialized Foster Care	0	0
Supervised Ind. Living	0	0
Training School (RITS)	1	<1
Other	5	2

Note: Valid percents reported.

Child and Youth Outcomes

School Grades and Attendance

Grades and school attendance are tracked for each child receiving youth diversionary services. As shown in Table 5 below, 62 to 68 percent of children and youth receive a grade of “C” or better in Math, English, or Reading during the period they are enrolled in youth diversionary programs. In addition, 54 percent of children and youth attend school on a regular basis.

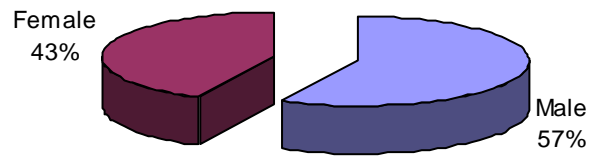
YDP Table 5. Child and Youth School Grades and Attendance (n=166)

	FY06 Overall	
	N	%
Math “C” (70) or better	90	62
English “C” (70) or better	90	64
Reading “C” (70) or better	39	68
Attendance	88	54

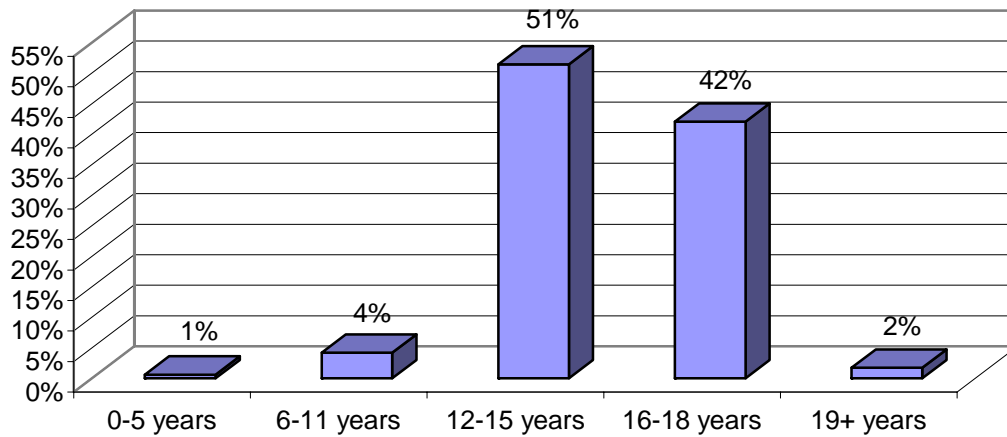
Note: Valid percents reported; Missing or Non-applicable Children for Math:(n=21, 12.7%), English:(n=25, 15.1%), Reading (n=109,65.7%)

Outreach and Tracking Services (O&T)

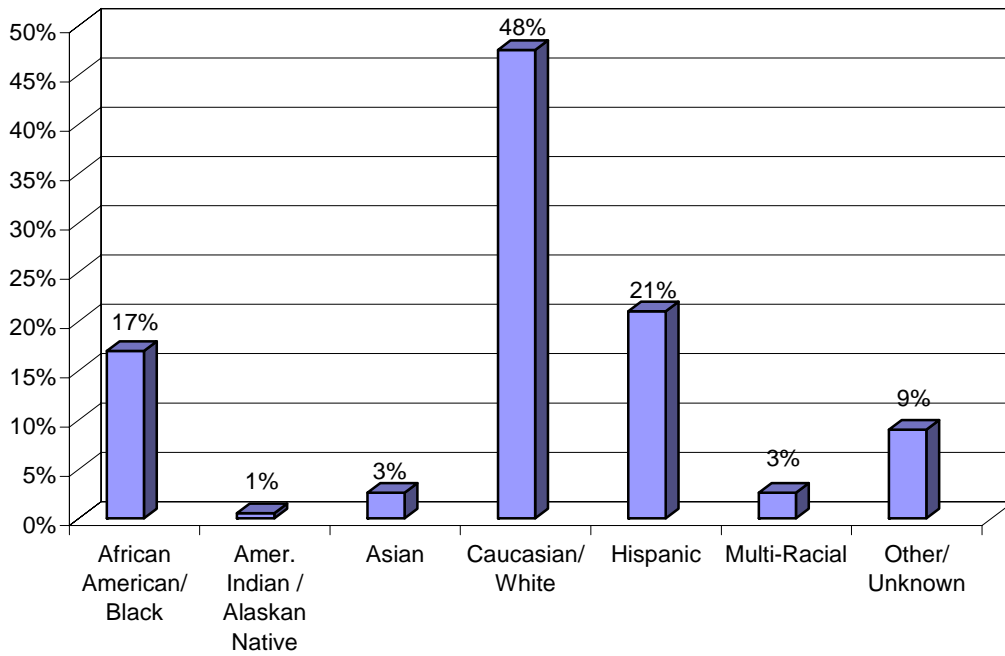
O&T Figure 1. Gender of Children and Youth Served (n=1,149)



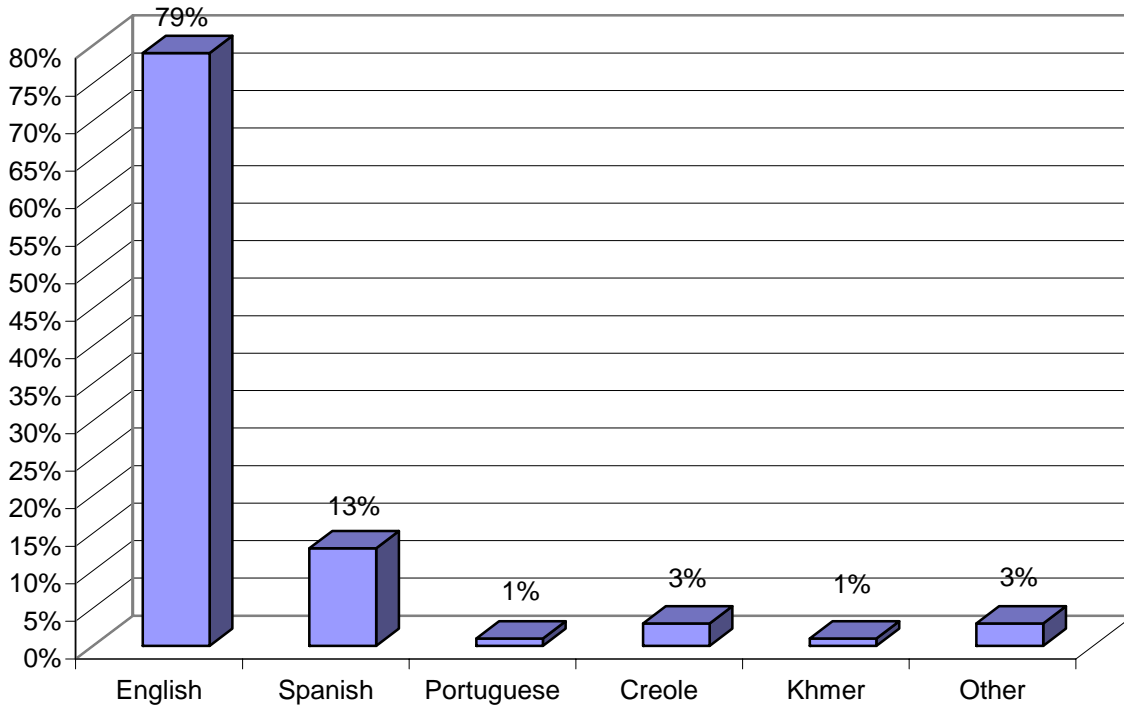
O&T Figure 2. Age Range of Children and Youth Served (n=1,149)



O&T Figure 3. Race and Ethnicity of Children and Youth Served (n=1,149)



O&T Figure 4. Primary Language of Children and Youth Served (n=1,149)



O&T Table 1. Ten Most Frequent Presenting Problems of Children and Youth Served (n=749)

	Child Presenting Problems	Percent
1	Anger/Aggression	28
2	School Problems/Issues	28
3	Out of Parental Control	27
4	Behavioral Problems	24
5	Criminal/Illegal Activity	14
6	Family Violence/Stress	13
7	Alcohol/Drug Use/Abuse	11
8	Relationship Problems	11
9	Hyperactivity/Attention Deficit	11
10	Mental Health Problems-Other	10

Note: Valid percents reported; Cumulative percents exceed 100%, as multiple problems may be present.

O&T Table 2. Ten Most Frequent Presenting Problems of Families (n=664)

	Family Presenting Problems	Percent
1	Parenting Problems	43
2	Family Stress	37
3	School Problems	30
4	Behavioral Problems	12
5	Financial Problems/Unemployment	12
6	Recreational Needs	9
7	Alcohol/Drug Use/Abuse	9
8	Mental Health Problems-Other	9
9	Unsafe Home/Neighborhood	8
10	Domestic Violence	6

Note: Valid percents reported; Cumulative percents exceed 100%, as multiple problems may be present.

O&T Table 3. Discharge Reasons of Children and Youth Served and Discharged (n=1,149)

Discharge Reasons	N	%
Children Discharged	661	58
5/10 Days Notice	4	1
Adjudicated/Re-Offended	42	6
Child Aged Out of Program	12	2
Court Ordered	38	6
Goals Accomplished	318	48
Left Without Notice/AMA/AWOL	21	3
Moved Out of State/Area	28	4
Refused Services	49	7
Time-Limit Reached	6	1
Other	143	22

Note: Valid percents reported.

O&T Table 4. Discharge Placement of Children and Youth Served and Discharged (n=1,149)

Discharge Placement	N	%
Children Discharged	661	58
Adult Corrections	2	< 0
CIS	3	< 0
DCYF-DAS Evaluation	1	< 0
DCYF- Foster Care	9	1
Emancipation/Adoption	0	0
Family Court	0	0
Group Home	30	5
Home- Parent/ Guardian	417	63
Home- Relatives	46	7
Job Corps	3	< 0
More Intensive Program	2	< 0
Mental Health Services	0	0
Psychiatric Hospitalization	8	1
Residential Placement	50	8
Shelter	6	1
Specialized Foster Care	3	< 0
Supervised Ind. Living	12	2
Training School (RITS)	47	7
Other	22	3

Note: Valid percents reported.

Child and Youth Outcomes

School Grades and Attendance

Grades and school attendance are tracked for each child receiving outreach and tracking services. As shown in Table 5 below, 65 to 73 percent of children and youth receive a grade of “C” or better in Math, English, or Reading during the period they are enrolled in outreach and tracking services. In addition, 65 percent of children and youth attend school on a regular basis.

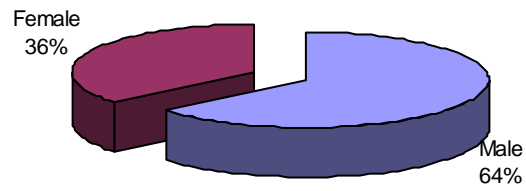
O&T Table 5. Child and Youth School Grades and Attendance (n=544)

	FY06 Overall	
	N	%
Math “C” (70) or better	227	65
English “C” (70) or better	233	65
Reading “C” (70) or better	74	73
Attendance	308	65

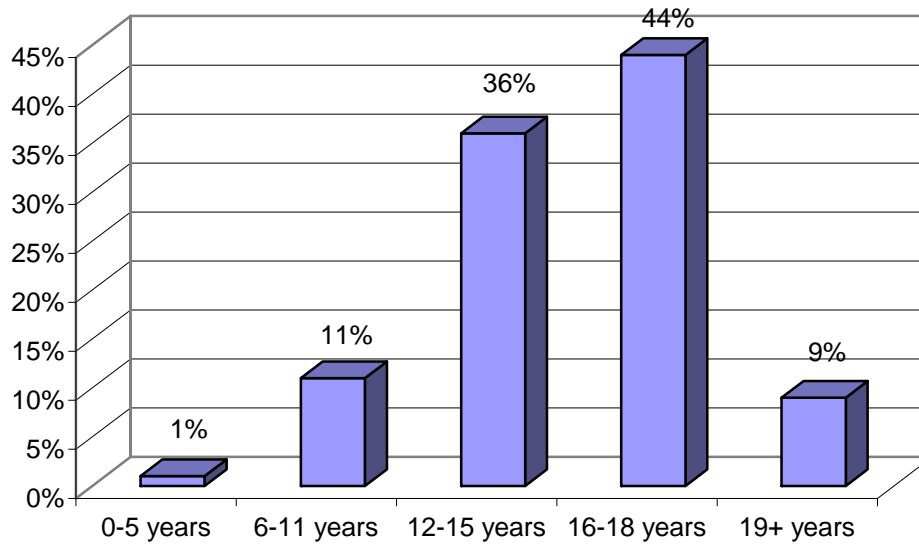
Note: Valid percents reported; Missing or Non-applicable Children for Math:(n=193, 35.5%), English:(n=187, 34.4%), Reading (n=442, 81.3%)

Residential Services (RES)

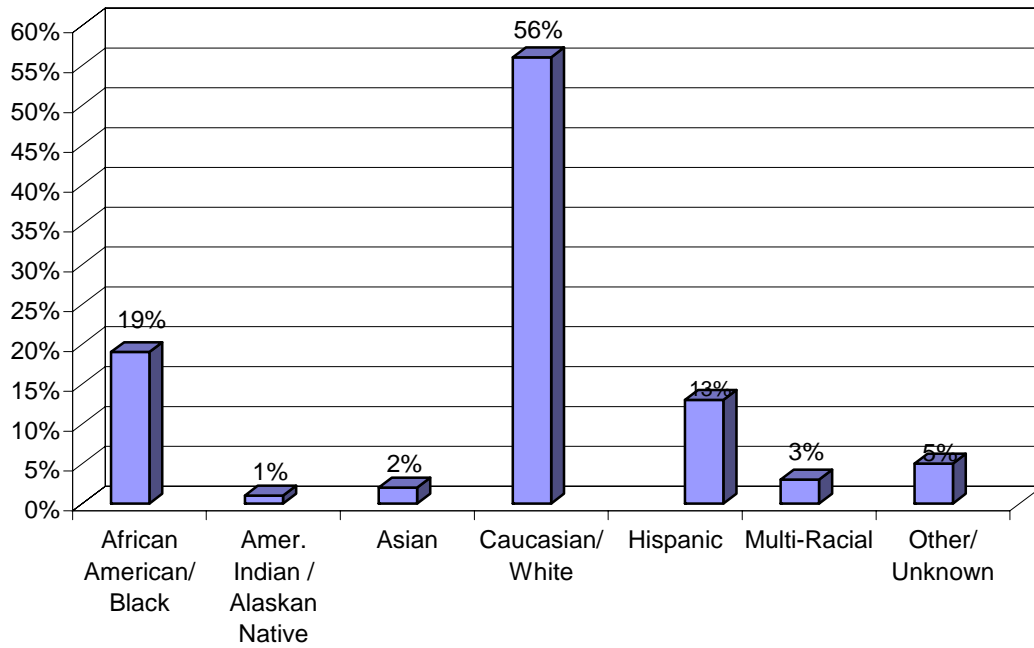
RES Figure 1. Gender of Children and Youth Served (n=1,337)



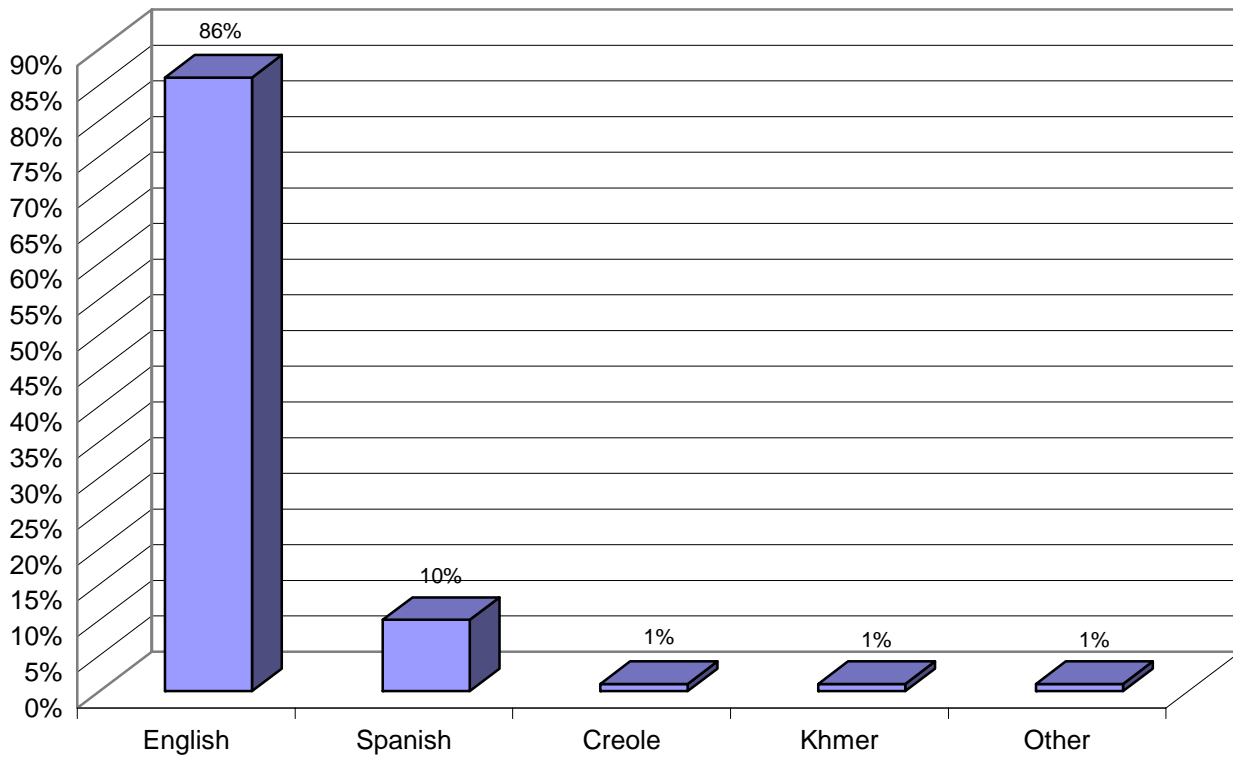
RES Figure 2. Age Range of Children and Youth Served (n=1,337)



RES Figure 3. Race and Ethnicity of Children and Youth Served (n=1,337)



RES Figure 4. Primary Language of Children and Youth Served (n=745)



RES Table 1. Ten Most Frequent Presenting Problems of Children and Youth Served (n=745)

	Child Presenting Problems	Percent
1	Behavioral Problems	57
2	School Problems	56
3	Anger/Aggression	54
4	Relationship Problems	40
5	Criminal/Illegal Activity	36
6	Family Violence/Stress	35
7	Out of Parental Control	35
8	Depression/Withdrawal	34
9	Delinquency	34
10	Alcohol/Drug Abuse	27

Note: Valid percents reported; Cumulative percents exceed 100%, as multiple problems may be present.

RES Table 2. Ten Most Frequent Presenting Problems of Families (n=745)

	Family Presenting Problems	Percent
1	Parenting Problems	67
2	Family Stress	56
3	Alcohol/Drug Abuse	29
4	Mental Health Problem	26
5	Neglect	25
6	Financial Problems/Unemployment	22
7	Behavioral Problem	22
8	Domestic Violence	18
9	School Problems	18
10	Unsafe Neighborhood/Home	17

Note: Valid percents reported; Cumulative percents exceed 100%, as multiple problems may be present.

RES Table 3. Discharge Reasons of Children and Youth Served and Discharged (n=780)

Discharge Reasons	N	%
Children Discharged	696	89
5/10 Days Notice	15	2
Adjudicated/Re-Offended	26	4
Child Aged Out of Program	29	4
Court Ordered	49	7
Goals Accomplished	263	38
Left Without Notice/AMA/AWOL	115	17
Moved Out of State/Area	8	1
Refused Services	18	3
Time-Limit Reached	3	<1
Other	170	24

Note: Valid percents reported; (n=84, 10.8%) children missing data.

RES Table 4.: Discharge Placement of Children and Youth Served and Discharged (n=780)

Discharge Placement	N	%
Children Discharged	696	89
Adult Corrections	0	0
CIS	0	0
DCYF-DAS Evaluation	6	1
DCYF- Foster Care	19	2
Emancipation/Adoption	35	5
Family Court	0	0
Group Home	45	6
Home- Parent/ Guardian	202	26
Home- Relatives	17	2
Job Corps	0	0
More Intensive Program	6	1
Mental Health Services	3	<1
Psychiatric Hospitalization	32	4
Residential Placement	56	7
Shelter	15	2
Specialized Foster Care	24	3
Supervised Ind. Living	99	13
Training School (RITS)	50	6
Other	171	22

Note: Valid percents reported

Child and Youth Outcomes

School Grades and Attendance

Grades and school attendance are tracked for each child receiving residential services. As shown in Table 5 below, 79 to 86 percent of children and youth receive a grade of “C” or better in Math, English, or Reading during the period they are enrolled in residential services. In addition, 94 percent of children and youth attend school on a regular basis.

RES Table 5. Child and Youth School Grades and Attendance (n=2043)

FY06 Overall		
	N	%
Math “C” (70) or better	969	79
English “C” (70) or better	992	81
Reading “C” (70) or better	374	86
Attendance	1670	94

Note: Valid percents reported; Missing or Non-applicable Children for Math:(n=117, 8.8%), English:(n=106, 8.0%), Reading (n=903, 68%)

Global Functioning

Global functioning for each child before and after receipt of residential services is assessed through the use of the Children’s Global Assessment of functioning Scale (CGAS) or the Global Assessment of Functioning (GAF) scale. Both scales provide a rating score from 1 (lowest) to 100 (highest) of current functioning of the child. Scores were available for 600 of the 907 (66%) children and youth served. As shown below in Table 6, comparisons between children’s average initial scores upon entry into residential services and their current scores, which are taken, on average, about 273 days (or about 9 months) later, show that current scores are significantly higher. This difference is highly statistically significant, indicating that children and youth improve in their functioning following the receipt of residential services.

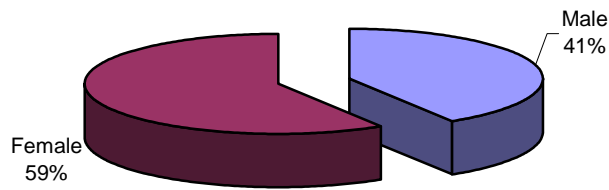
RES Table 6. Children and Youth Average GAF Scores and Changes Over Time (n=600)

FY06 Overall		
	Mean	SD
Initial Scores	55.10	10.71
Current Scores	57.91	10.73
Difference***	2.81	8.20

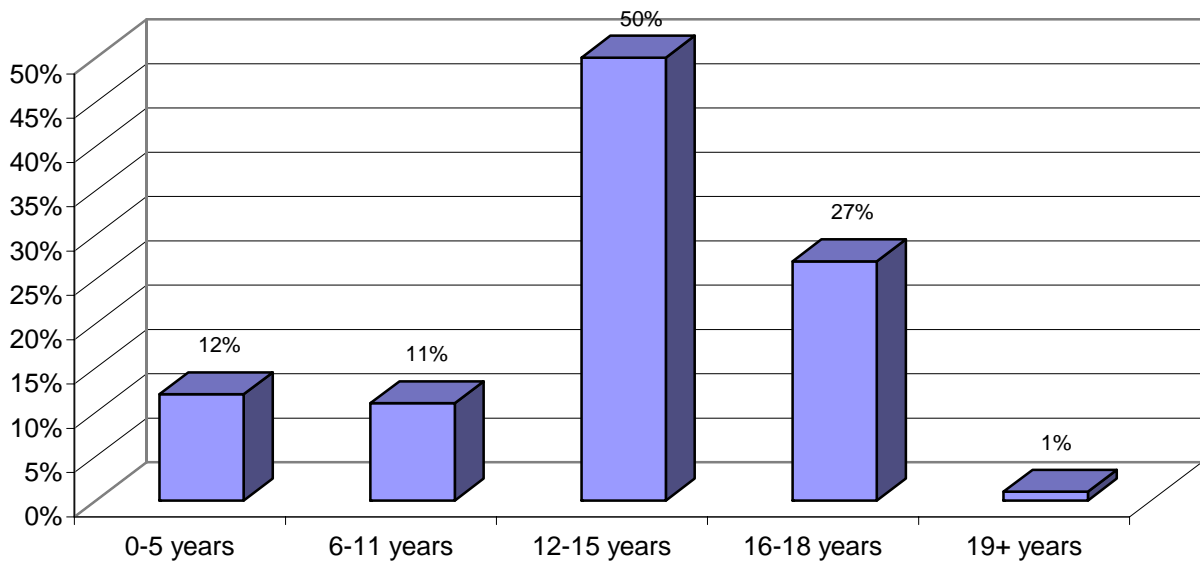
*Note: *P<. 05, **P<. 01, ***P<. 001*

Emergency Shelter Services (SH)

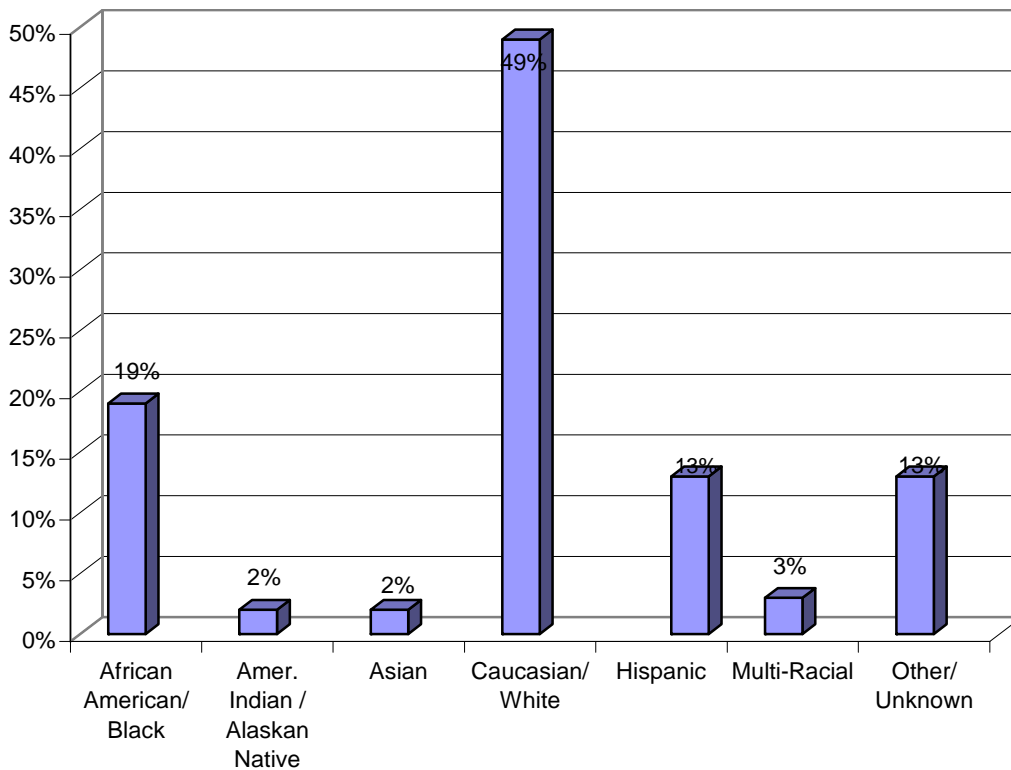
SH Figure 1. Gender of Children and Youth Served (n=794)



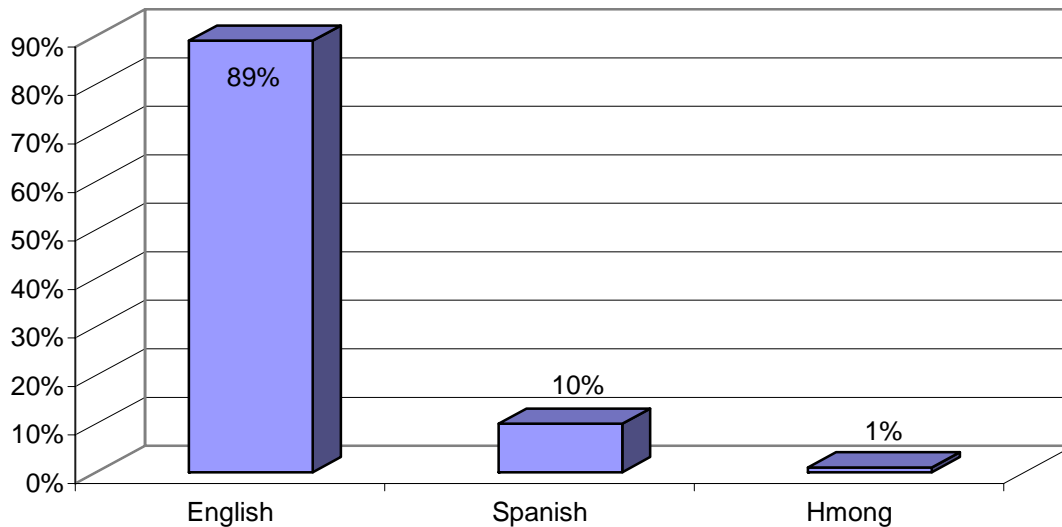
SH Figure 2. Age Range of Children and Youth Served (n=794)



SH Figure 3. Race and Ethnicity of Children and Youth Served (n=794)



SH Figure 4. Primary Language of Children and Youth Served (n=690)



SH Table 1. Ten Most Frequent Presenting Problems of Children and Youth Served (n=690)

	Child Presenting Problems	Percent
1	Behavioral Problems	53
2	School Problems	34
3	Anger/Aggression	31
4	Other	29
5	Family Violence/Stress	25
6	Neglect	24
7	Out of Parental Control	22
8	Delinquency	20
9	Relationship Problems	20
10	Mental Health Problems	18

Note: Valid percents reported; Cumulative percents exceed 100%, as multiple problems may be present.

SH Table 2. Ten Most Frequent Presenting Problems of Families (n=594)

	Family Presenting Problems	Percent
1	Parenting Problems	50
2	Family Stress	39
3	Other Presenting Problems	33
4	Neglect	24
5	Alcohol/Drug Abuse	16
6	Mental Health Problem	13
7	Behavioral Problems	11
8	Domestic Violence	10
9	Abuse-Physical	10
10	Death/ Incapacity of Caregiver	10

Note: Valid percents reported; Cumulative percents exceed 100%, as multiple problems may be present.

SH Table 3. Discharge Reasons of Children and Youth Served and Discharged (n=1,337)

Discharge Reasons	N	%
Children Discharged	780	58
5/10 Days Notice	4	1
Adjudicated/Re-Offended	4	1
Child Aged Out of Program	1	<1
Court Ordered	19	3
Goals Accomplished	307	52
Left Without Notice/AMA/AWOL	147	25
Moved Out of State/Area	2	<1
Refused Services	0	0
Time-Limit Reached	6	1
Other	103	17

Note: Valid percents reported; n=95, 12.2% children missing data.

SH Table 4. Discharge Placement of Children and Youth Served and Discharged (n=1,337)

Discharge Placement	N	%
Children Discharged	780	58
Adult Corrections	0	0
CIS	0	0
DCYF-DAS Evaluation	19	3
DCYF- Foster Care	102	15
Emancipation/Adoption	4	1
Family Court	0	0
Group Home	47	7
Home- Parent/ Guardian	152	22
Home- Relatives	19	3
Job Corps	0	0
More Intensive Program	3	<1
Mental Health Services	1	<1
Psychiatric Hospitalization	11	2
Residential Placement	70	10
Shelter	15	2
Specialized Foster Care	36	5
Supervised Ind. Living	36	5
Training School (RITS)	12	2
Other	161	23

Note: Valid percents reported; n=95, 11.8% children missing data.

Child and Youth Outcomes

School Attendance

School attendance is tracked for each child receiving emergency shelter services. As shown in Table 5 below, 84 percent of children and youth attend school on a regular basis. Since children and youth are enrolled in shelter services for about one month or less on average, grades are not tracked by shelter services providers.

SH Table 5. Child and Youth School Attendance (n=411)

FY06 Overall		
	N	%
Attendance	343	84

Note: Valid percents reported.

Global Functioning

Global functioning for each child before and after receipt of emergency shelter services is assessed through the use of the Children’s Global Assessment of functioning Scale (CGAS) or the Global Assessment of Functioning (GAF) scale. Both scales provide a rating score from 1 (lowest) to 100 (highest) of current functioning of the child. Scores were available for 152 of the 411 (37%) children and youth served. As shown below in Table 6, comparisons between children’s average initial scores upon entry into shelter services and their current scores, which are taken, on average, about 31 days (or about 1 month) later, show that current scores are significantly higher. This difference is highly statistically significant, indicating that children and youth improve in their functioning following the receipt of emergency shelter services.

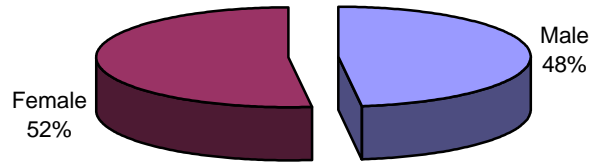
SH Table 6. Children and Youth Average GAF Scores and Changes Over Time (n=152)

FY06 Overall		
	Mean	SD
Initial Scores	56.76	9.75
Current Scores	58.80	10.35
Difference***	2.04	6.59

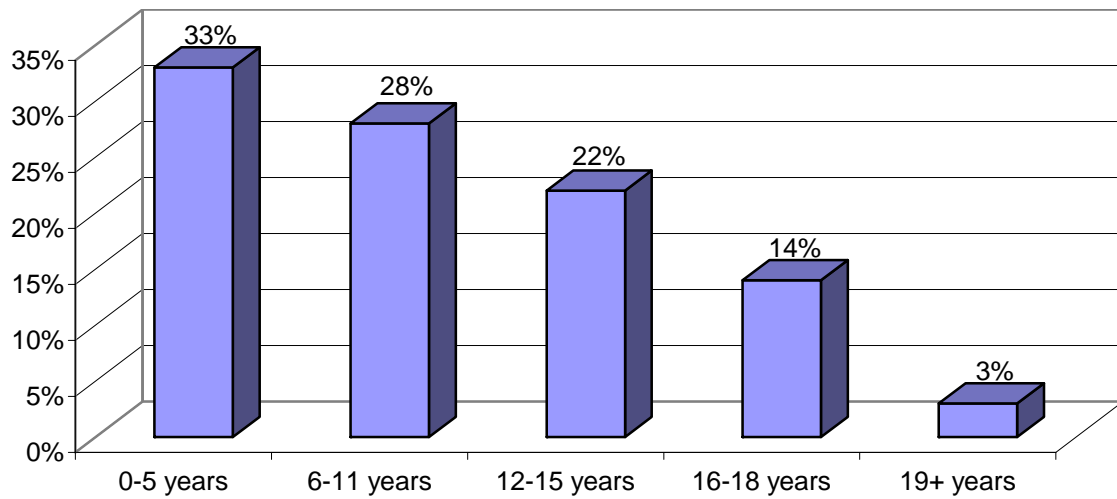
*Note: *P<.05, **P<.01, ***P<.001*

Specialized Foster Care (SFC)

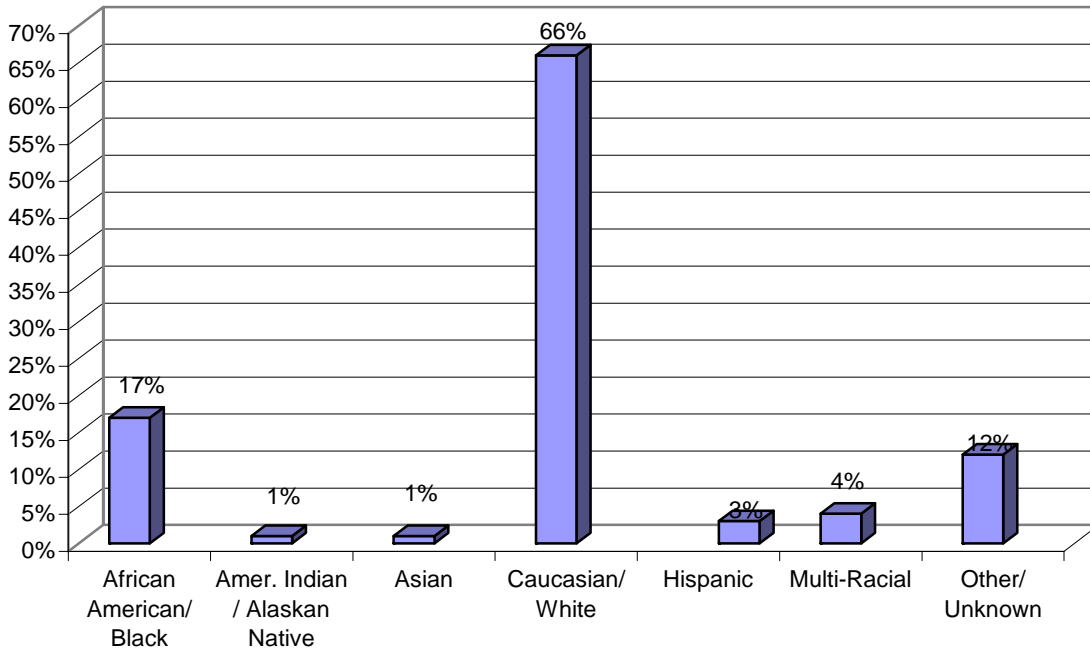
SFC Figure 1. Gender of Children and Youth Served (n=290)



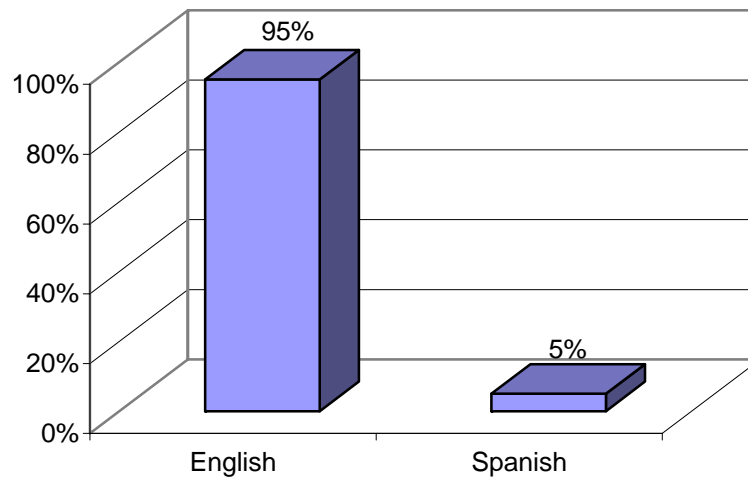
SFC Figure 2. Age Range of Children and Youth Served (n=290)



SFC Figure 3. Race and Ethnicity of Children and Youth Served (n=290)



SFC Figure 4. Primary Language of Children and Youth Served (n=124)



SFC Table 1. Ten Most Frequent Presenting Problems of Children and Youth Served (n=118)

	Child Presenting Problems	Percent
1	Neglect	56
2	Behavioral Problems	32
3	Family Violence/Stress	27
4	Anger/Aggression	26
5	School Problems	25
6	Abuse-Physical	23
7	Out of Parental Control	21
8	Abuse-Emotional	20
9	Relationship Problems	20
10	Grief and Loss	18

Note: Valid percents reported; Cumulative percents exceed 100%, as multiple problems may be present.

SFC Table 2. Ten Most Frequent Presenting Problems of Families (n=118)

	Family Presenting Problems	Percent
1	Neglect	59
2	Parenting Problems	51
3	Alcohol/Drug Abuse	48
4	Family Stress	42
5	Mental Health Problem	40
6	Financial Problem/Unemployment	30
7	Criminal Involvement	26
8	Abuse - Physical	25
9	Domestic Violence	25
10	Abuse - Emotional	22

Note: Valid percents reported; Cumulative percents exceed 100%, as multiple problems may be present.

SFC Table 3. Discharge Reasons of Children and Youth Served and Discharged (n=290)

Discharge Reasons	N	%
Children Discharged	121	42
5/10 Days Notice	6	5
Adjudicated/Re-Offended	0	0
Child Aged Out of Program	1	1
Court Ordered	6	5
Goals Accomplished	53	46
Left Without Notice/AMA/AWOL	6	5
Moved Out of State/Area	2	2
Refused Services	4	4
Time-Limit Reached	0	0
Other	37	32

Note: Valid percents reported; n=6, 5.0% children missing data.

SFC Table 4. Discharge Placement of Children and Youth Served and Discharged (n=290)

Discharge Placement	N	%
Children Discharged	121	42
Adult Corrections	0	0
CIS	0	0
DCYF-DAS Evaluation	0	0
DCYF- Foster Care	9	7
Emancipation/Adoption	28	23
Family Court	0	0
Group Home	3	3
Home- Parent/ Guardian	34	28
Home- Relatives	5	4
Job Corps	0	0
More Intensive Program	0	0
Mental Health Services	0	0
Psychiatric Hospitalization	2	2
Residential Placement	8	7
Shelter	2	2
Specialized Foster Care	5	4
Supervised Ind. Living	4	3
Training School (RITS)	0	0
Other	21	17

Child and Youth Outcomes

School Grades and Attendance

Grades and school attendance are tracked for each child receiving specialized foster care services. As shown in Table 5 below, 84 to 95 percent of children and youth receive a grade of “C” or better in Math, English, or Reading during the period they are enrolled in specialized foster care services. In addition, 99 percent of children and youth attend school on a regular basis.

SFC Table 5. Child and Youth School Grades and Attendance (n=809)

FY06 Overall		
	N	%
Math “C” (70) or better	304	84
English “C” (70) or better	308	87
Reading “C” (70) or better	105	95
Attendance	659	99

Note: Valid percents reported; Missing or Non-applicable Children for Math:(n=447, 55.3%), English:(n=453, 56.0%), Reading (n=698, 86.3%)

Global Functioning

Global functioning for each child before and after receipt of specialized foster care services is assessed through the use of the Children’s Global Assessment of functioning Scale (CGAS) or the Global Assessment of Functioning (GAF) scale. Both scales provide a rating score from 1 (lowest) to 100 (highest) of current functioning of the child. Scores were available for 140 of the 809 (17%) children and youth served. As shown below in Table 6, comparisons between children’s average initial scores upon entry into specialized foster care services and their current scores show that current scores are significantly higher. This difference is highly statistically significant, indicating that children and youth improve in their functioning following the receipt of specialized foster care services.

SFC Table 6. Children and Youth Average GAF Scores and Changes Over Time (n=140)

FY06 Overall		
	Mean	SD
Initial Scores	61.47	7.99
Current Scores	66.56	8.69
Difference***	5.09	8.52

Note: *P<.05, **P<.01, ***P<.001

Developmental Outcomes

Children’s developmental outcomes were assessed using the Ages & Stages Questionnaire (ASQ). This is completed in conjunction with the parent/caregiver and provides developmental information on a variety of children’s skills, such as: communication, gross motor, fine motor, problem solving, and personal-social. Table 7 below shows the extent to which children did or did not meet age-appropriate developmental milestones upon entry into specialized foster care services. As shown, 4.1 to 25.0 percent of children did not meet milestones in at least one area of development when they entered specialized foster care services.

SFC Table 7. Ages & Stages -- Overall Baseline Annual Assessment Comparison of Children Who Did and Did Not Meet the Age-Appropriate Developmental Milestones (n=24)

Overall Baseline Annual Assessment (N=24)				
	Children Who Did Not Meet Their Age-Appropriate Developmental Milestones		Children Who Did Meet Their Age-Appropriate Developmental Milestones	
	Valid Percents	N	Valid Percents	N
Communication	12.5	3	87.5	21
Gross Motor	4.2	1	95.8	23
Fine Motor	12.5	3	87.5	21
Problem Solving	16.7	4	83.3	20
Personal-Social	25.0	6	75.0	18

Note: Missing Data for the following Milestones: Communication (n= 4, 14.3%), Gross Motor (n=4, 14.3%), Fine Motor (n=4, 14.3%), Problem Solving (n=4, 14.3%) Personal-Social (n=4, 14.3%)

Table 8 below shows the extent to which those children who were discharged from specialized foster care services and completed the Ages & Stages Questionnaire did or did not meet specific developmental milestones. Since not all children had completed the program, this represents a subsample of all children and families served. As is shown in Table 8, the great majority of children sustained developmental gains they had demonstrated at the baseline assessment (68.8% to 100%). In addition, meaningful percentages of children met new developmental milestones at the final assessment after not having met those milestones at the baseline assessment (6.3% out of 6.3%, 6.3% out of 18.8%, 12.5% out of 25.0%). However, a significant percentage of children remained at sub-typical development at the final assessment (ranging from 6.3% to 12.5%), and a small percentage of children lost developmental gains observed at baseline (ranging from 6.3% to 12.5%). Overall, children were found to be challenged most in meeting developmental milestones for personal-social skills at both the baseline and final assessment, and least challenged by meeting milestones for gross motor skills.

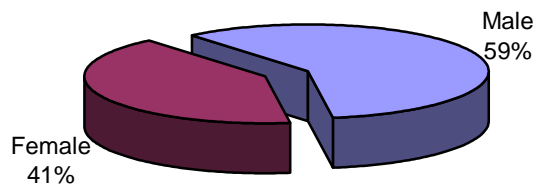
SFC Table 8. Ages & Stages – Subsample Comparison of Children Experiencing Changes in ASQ Domains (n=28)

Subset of Overall Sample: Includes All Cases that have a Baseline Annual Assessment and a Final Annual Assessment						
Percent of Children Who <i>Did Not</i> Meet Their Age-Appropriate Developmental Milestones at the Annual Baseline Assessment				Percent of Children Who <i>Did</i> Meet Age-Appropriate Developmental Milestones at the Annual Baseline Assessment		
	Annual Baseline Assessment	Final Annual Assessment*		Annual Baseline Assessment	Final Annual Assessment*	
		Met New Developmental Milestones	Remained at Sub-typical development		Sustained Developmental Gains	Lost Developmental Gains
Communication	6.3	0.0	6.3	93.8	81.3	12.5
Gross Motor	0.0	0.0	0.0	100.0	100.0	0.0
Fine Motor	6.3	6.3	0.0	93.8	93.8	0.0
Problem Solving	18.8	6.3	12.5	81.3	68.8	12.5
Personal-Social	25.0	12.5	12.5	75.1	68.8	6.3

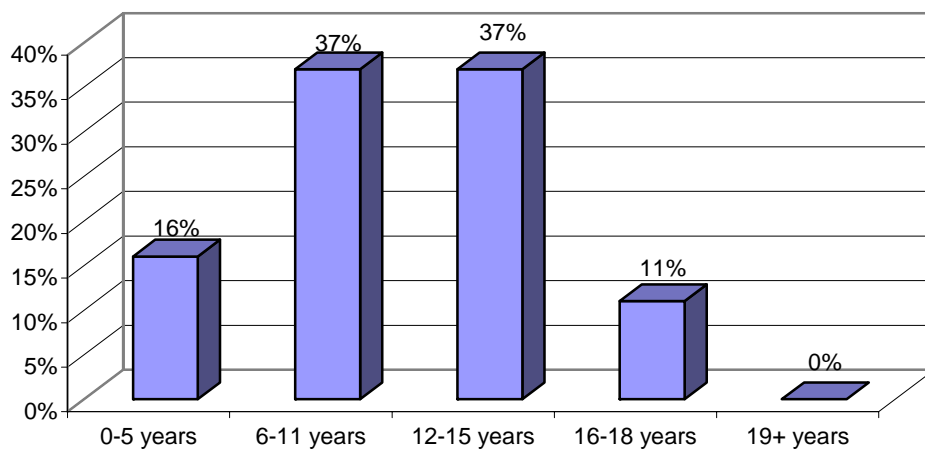
Note: Missing Data for the following Milestones: Communication (n=12, 42.9%) Fine Motor (n=12, 42.9%), Problem Solving (n=12, 42.9%) Personal-Social (n=12, 42.9%)

Children's Intensive Services (CIS)

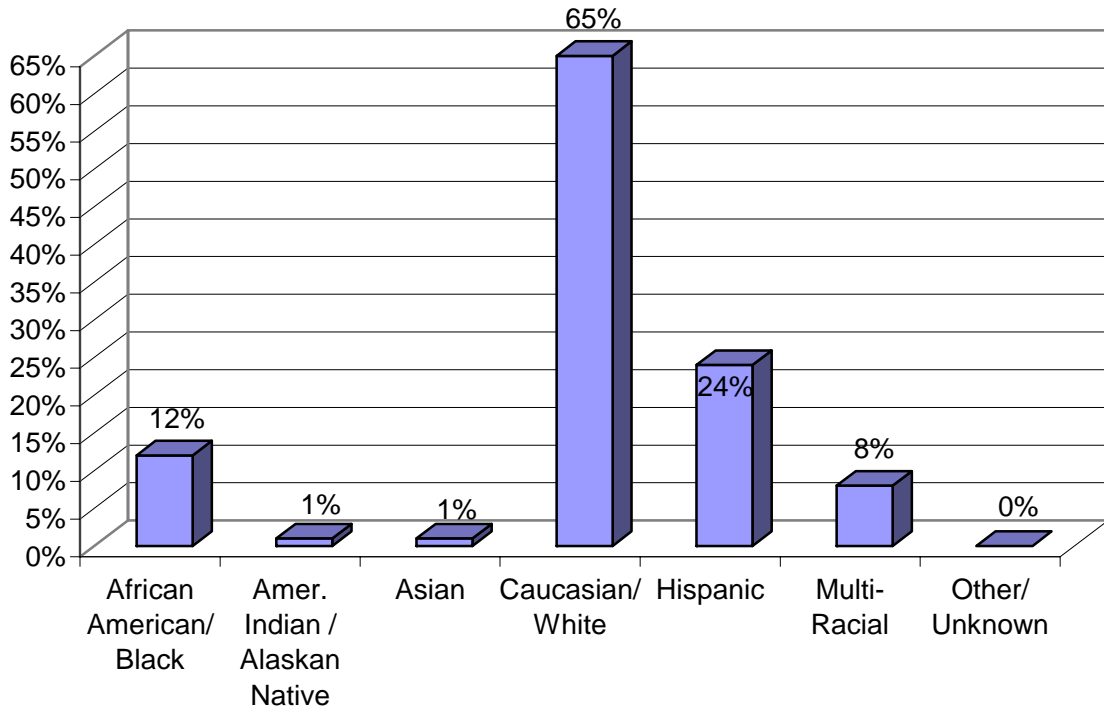
CIS Figure 1. Gender of Children and Youth Served (n=2881)



CIS Figure 2. Age Range of Children and Youth Served (n=2881)



CIS Figure 3. Race and Ethnicity of Children and Youth Served (n=2881)



CIS Table 1. Frequency of Axis IV Diagnoses (n=2881)

Diagnosis	N	%
Problems With Primary Support Group	2465	86
Problems Related to the Social Environment	1921	67
Educational Problems	2085	72
Occupational Problems	114	4
Housing Problems	410	14
Economic Problems	715	25
Problems With Access to Health Care Services	98	3
Problems Related to Interaction With the Legal System/Crime	500	17
Other Psychosocial and Environmental Problems	910	32

Note: Cumulative percents exceed 100%, as multiple diagnoses may be present; missing data (20 children, 1%)

CIS Table 2. Discharge Status of Children and Youth Served (n=1908)

Discharge Status	N	%
Successful Completion – CIS Goals Met	727	45
Mutual Discharge – Goals NOT Fully Met	200	12
Client Withdrew With Notice	114	7
Client Moved Out of Area	124	8
Client Withdrew WITHOUT Notice	170	11
Change In Insurance Eligibility	23	1
Client’s Behaviors Necessitated More Intensive Services	83	5
Client Aged out of Program	21	1
Client Adjudicated Out of the Program	17	1
Other	139	9

Note: Valid percents reported (n= 290, 15% children missing data).

CIS Table 3. Discharge Referral of Children and Youth Served and Discharged (n=1908)

Discharge Referral	N	%
Outpatient Medication Only – CIS Program Psychiatrist or Clinical Nurse Specialist	139	11
Outpatient Medication Only – Psychiatrist or Clinical Nurse Specialist In Private Practice or Another Program	48	4
Outpatient Medication Only – Primary Care Clinician will Prescribe Medications	54	4
Outpatient Therapy Only	161	12
Outpatient Therapy and Medication	214	16
Enhanced/Intensive Outpatient/Referral to Commercial CFIT (only when DISSTAT above is #7 or #8)	29	2
Transfer to Another CIS Program	40	3
Residential Program	61	5
Partial Hospitalization	10	1
Inpatient Hospitalization	24	2
No Follow-up Services Recommended	323	25
Services Recommended but Family Declined to Pursue Follow-up Services	217	16

Note: Valid percents reported (n= 588, 31% children missing data).

CIS Table 4. Discharge Placement (Combines Old Discharge Values) (n=1908)

Discharge Placement	N	%
Home With Parent	1269	76
Home With Relatives/Guardian	101	6
Kinship Foster Care	19	1
Contracted Foster Care	50	3
Treatment Foster Care	12	1
Residential Treatment Program – Group Home	98	6
Inpatient Psychiatric Hospital	26	2
Shelter – Homeless, Family and Youth	16	1
Rhode Island Training School (RITS)	9	1
Independent living Program	2	<1
Living Independently	4	<1
Other	54	3

Note: Valid percents reported (n= 248, 13% children missing data).

Child and Youth Outcomes

Functioning & Symptoms

Global functioning for each child before and after receipt of CIS is assessed through the use of the Modified Children’s Global Assessment of functioning Scale (M-CGAS). The MCGAS provides a rating score from 1 (lowest) to 100 (highest) of current functioning of the child. Scores were available for 1,206 of the 1,908 (63%) children and youth served. As shown below in Table 5, comparisons between children’s average initial scores and their current scores show that current scores are significantly higher. This difference is highly statistically significant, indicating that children and youth improve in their global functioning following the receipt of CIS.

CIS Table 5. Children and Youth’s M-CGAS Scores and Changes Over Time (n=1206)

FY06 Overall		
	Mean	SD
CGAS Admissions	42.73	5.54
CGAS Discharges	47.71	8.79
CGAS Difference***	4.92	8.92

*Note: *P<. 05, **P<. 01, ***P<. 001*

Children’s community functioning before and after receipt of CIS is assessed using the functioning items of the Ohio Scales. This measure consists of 20 items rated on a 5-point scale ranging from 0 (Extreme troubles) to 4 (Doing very well). Lower scores indicate poorer functioning, with scores lower than 44 indicating a need for intensive mental health service involvement. Scores were available for 1,206 of the 1,908 (63%) children and youth served. As shown below in Table 6, community functioning improves markedly following receipt of CIS, a difference that is highly statistically significant. This shows that children and youth improve following enrollment in CIS.

CIS Table 6. Children and Youth Ohio Scale Functioning and Changes Over Time (n=1206)

FY06 Overall		
	Mean	SD
Ohio Functioning Scale Admissions	36.72	11.09
Ohio Functioning Scale Discharges	39.96	12.01
Ohio Functioning Scale Difference***	3.38	11.67

*Note: *P<. 05, **P<. 01, ***P<. 001*

A final measure of child and youth outcome was the assessment of Ohio Scales problem symptoms before and after receipt of CIS. Symptom severity consists of 20 questions rated on a 6-point scale ranging from 0 (Not at all) to 5 (All of the time) with higher scores indicating worse symptoms. Scores greater than 30 indicate moderate levels of problem severity and are consistent with intensive mental health service needs. Scores were available for 1,206 of the 1,908 (63%) children and youth served. As shown in Table 7, problem symptoms improve markedly following receipt of CIS, a difference that is highly statistically significant. Children and youth clearly show fewer symptoms following enrollment in CIS.

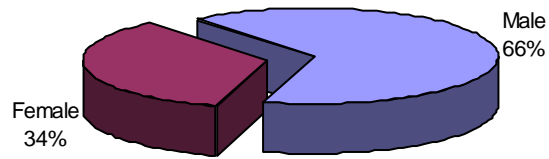
CIS Table 7. Children and Youth Ohio Problem Symptoms and Changes Over Time (n=1206)

FY06 Overall		
	Mean	SD
Ohio Problem Scale Admissions	35.42	12.91
Ohio Problem Scale Discharges	28.84	14.28
Ohio Problem Scale Difference***	-6.19	13.88

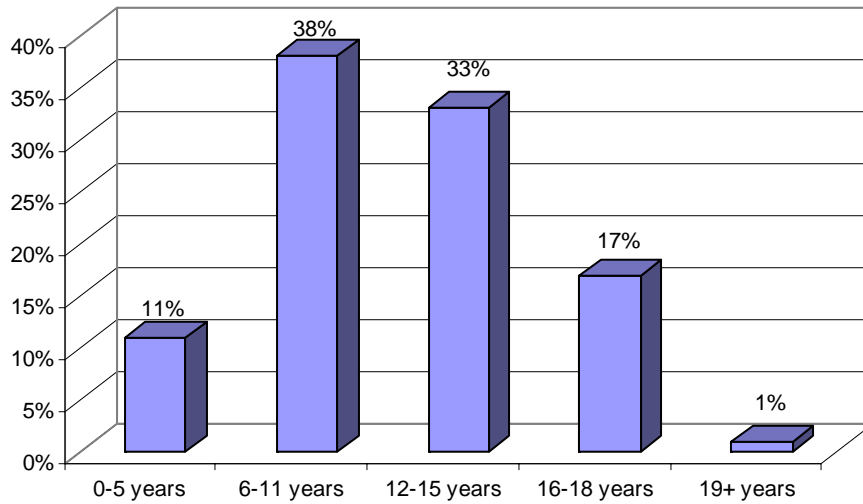
*Note: *P<.05, **P<.01, ***P<.001*

Child & Adolescent Service System Program (CASSP)

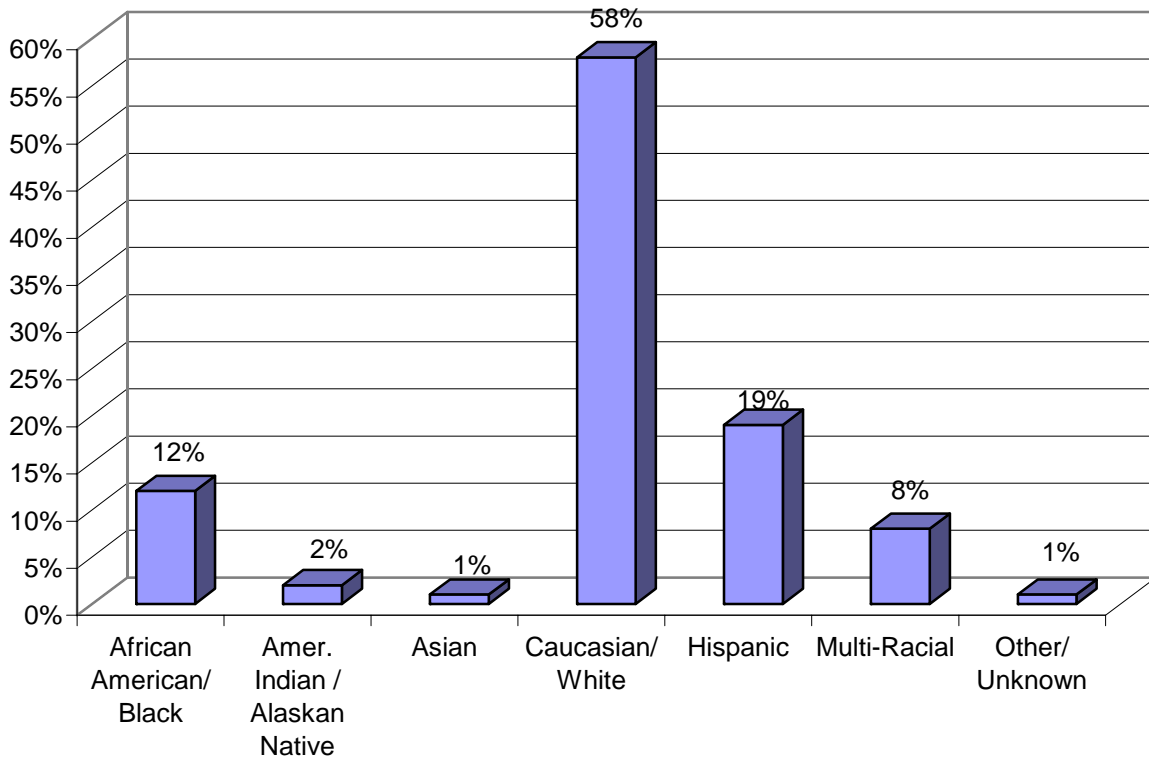
CASSP Figure 1. Gender of Children and Youth Served



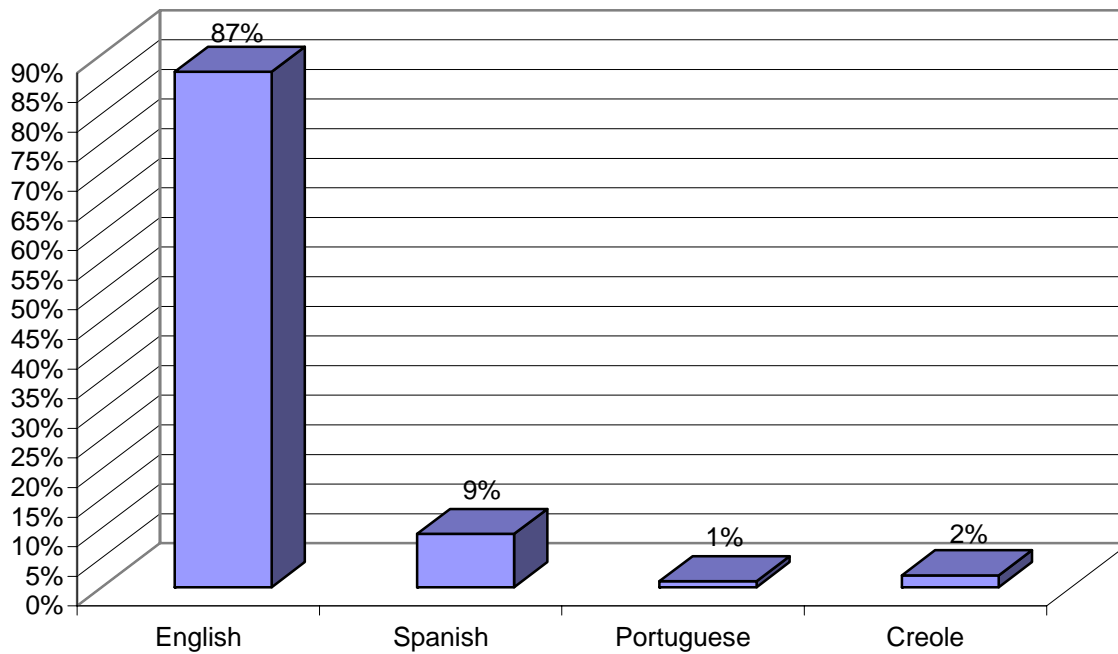
CASSP Figure 2. Age Range of Children and Youth Served



CASSP Figure 3. Race and Ethnicity of Children and Youth Served



CASSP Figure 4. Primary Language of Children and Youth Served (n=1615)



CASSP Table 1. Ten Most Frequent Presenting Problems of Children and Youth Served (n=)

	Child Presenting Problems	Percent
1	Behavioral Problems	72
2	Anger/Aggression	60
3	School Problems	53
4	Hyperactivity/Attention Deficit	49
5	Anxiety	46
6	Family Violence/Stress	46
7	Depression/Withdrawal	39
8	Mental Health Problems	38
9	Relationship Problems	37
10	Violent Behavior	29

Note: Valid percents reported; Cumulative percents exceed 100%, as multiple problems may be present. Missing data (n=59, 3.4%)

CASSP Table 2. Discharge Reasons of Children and Youth Served and Discharged (n=1717)

Discharge Reasons	N	%
Children Discharged	289	17
5/10 Days Notice	43	15
Adjudicated/Re-Offended	6	2
Child Aged Out of Program	0	0
Court Ordered	1	<1
Goals Accomplished	88	30
Left Without Notice/AMA/AWOL	9	3
Moved Out of State/Area	22	8
Refused Services	29	10
Time-Limit Reached	9	3
Other	82	28

Note: Valid percents reported.

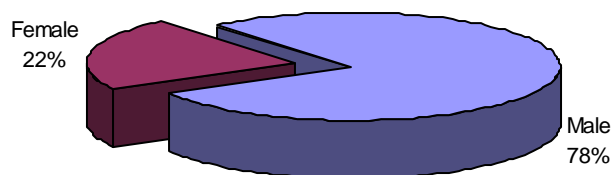
CASSP Table 3.: Discharge Placement of Children and Youth Served and Discharged (n=1717)

Discharge Placement	N	%
Children Discharged	289	17
Adult Corrections	0	0
CIS	3	1
DCYF-DAS Evaluation	0	0
DCYF- Foster Care	5	2
Emancipation/Adoption	0	0
Family Court	1	<1
Group Home	4	1
Home- Parent/ Guardian	196	68
Home- Relatives	5	2
Job Corps	0	0
More Intensive Program	2	1
Mental Health Services	0	0
Psychiatric Hospitalization	3	1
Residential Placement	6	2
Shelter	1	<1
Specialized Foster Care	0	0
Supervised Ind. Living	0	0
Training School (RITS)	12	4
Other	51	18

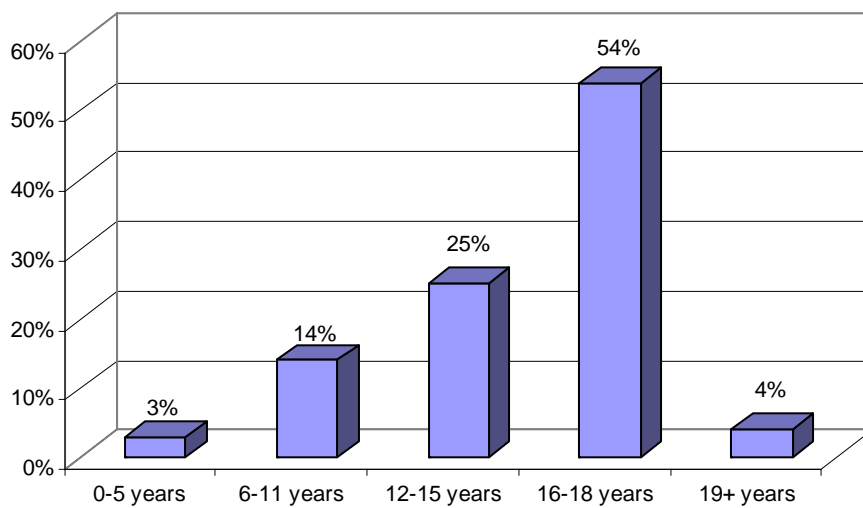
Note: Valid percents reported.

Project HOPE

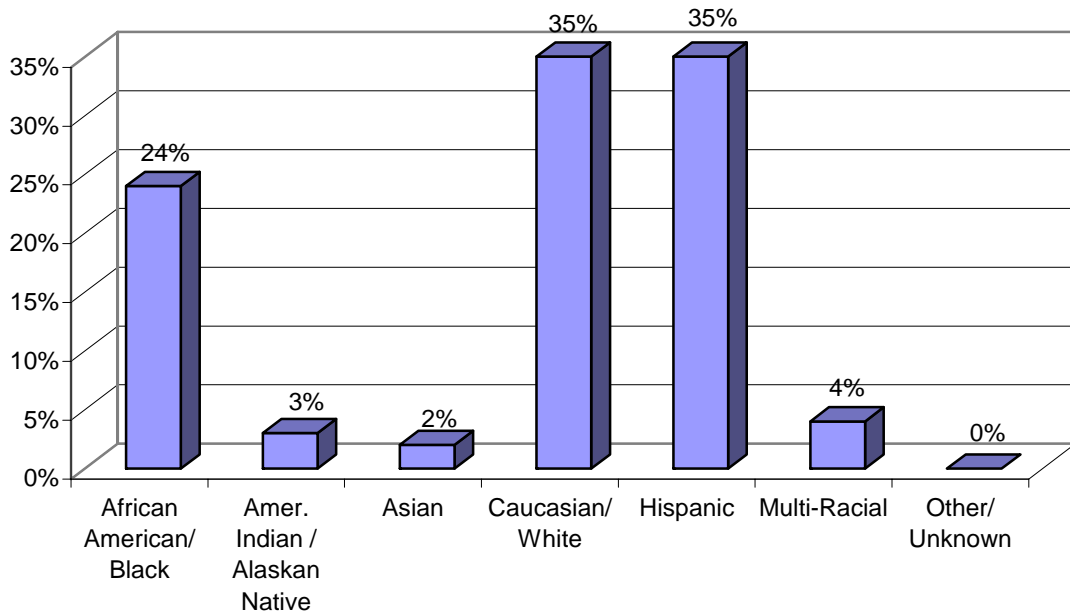
HOPE Figure 1. Gender of Children and Youth Served (n=310)



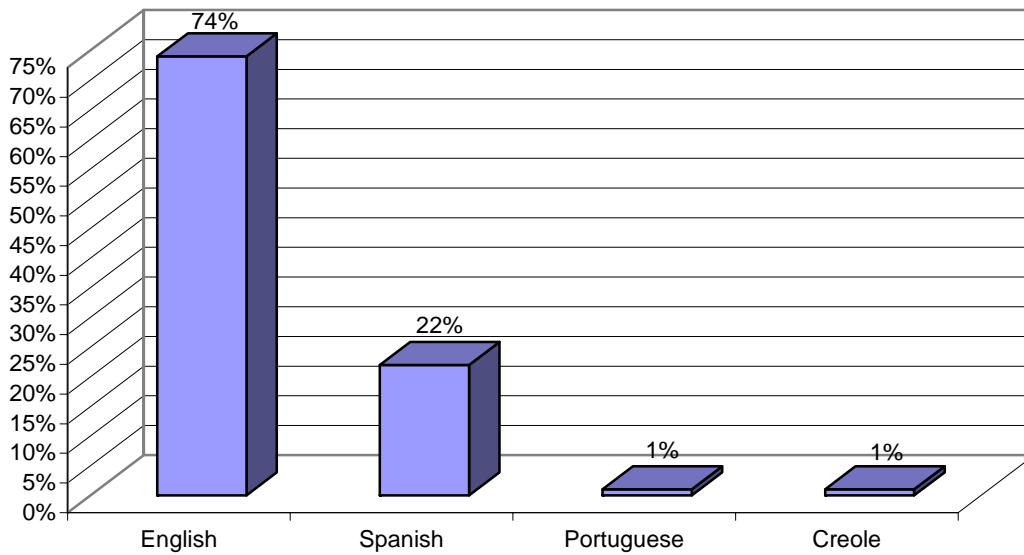
HOPE Figure 2. Age Range of Children and Youth Served (n=310)



HOPE Figure 3. Race and Ethnicity of Children and Youth Served (n=310)



HOPE Figure 4. Primary Language of Children and Youth Served (n=310)



HOPE Table 1. Ten Most Frequent Presenting Problems of Children and Youth Served (n=310)

	Child Presenting Problems	Percent
1	Behavioral Problems	67
2	Criminal/Illegal Activity	59
3	Anger/Aggression	59
4	School Problems	46
5	Alcohol/Drug Abuse	40
6	Delinquency	36
7	Relationship Problems	33
8	Family Violence/Stress	29
9	Hyperactivity/Attention Deficit	27
10	Out of Parental Control	27

Note: Valid percents reported; Cumulative percents exceed 100%, as multiple problems may be present.

HOPE Table 2. Discharge Reasons of Children and Youth Served and Discharged (n=53)

Discharge Reasons	N	%
Children Discharged	53	17
5/10 Days Notice	6	11
Adjudicated/Re-Offended	5	9
Child Aged Out of Program	0	0
Court Ordered	0	0
Goals Accomplished	6	11
Left Without Notice/AMA/AWOL	6	11
Moved Out of State/Area	3	6
Refused Services	8	15
Time-Limit Reached	1	2
Other	18	34

Note: Valid percents reported.

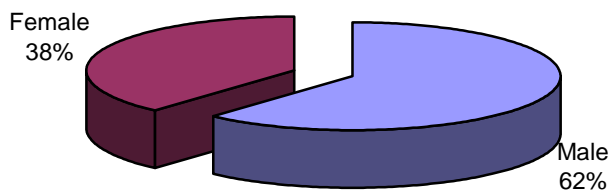
HOPE Table 3. Discharge Placement of Children and Youth Served and Discharged (n=53)

Discharge Placement	N	%
Children Discharged	53	17
Adult Corrections	0	0
CIS	1	2
DCYF-DAS Evaluation	0	0
DCYF- Foster Care	1	2
Emancipation/Adoption	0	0
Family Court	1	2
Group Home	2	4
Home- Parent/ Guardian	25	47
Home- Relatives	1	2
Job Corps	0	0
More Intensive Program	0	0
Mental Health Services	0	0
Psychiatric Hospitalization	0	0
Residential Placement	1	2
Shelter	0	0
Specialized Foster Care	0	0
Supervised Ind. Living	0	0
Training School (RITS)	10	19
Other	11	21

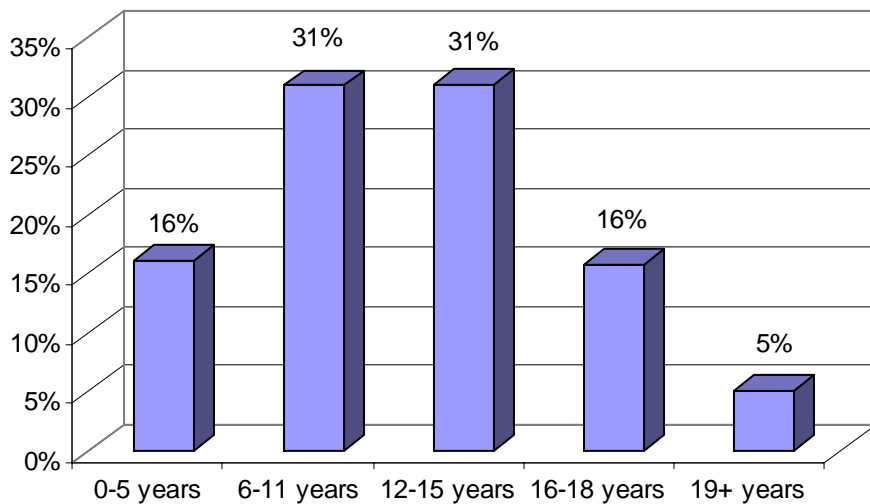
Note: Valid percents reported.

Parent Support Network (PSN)

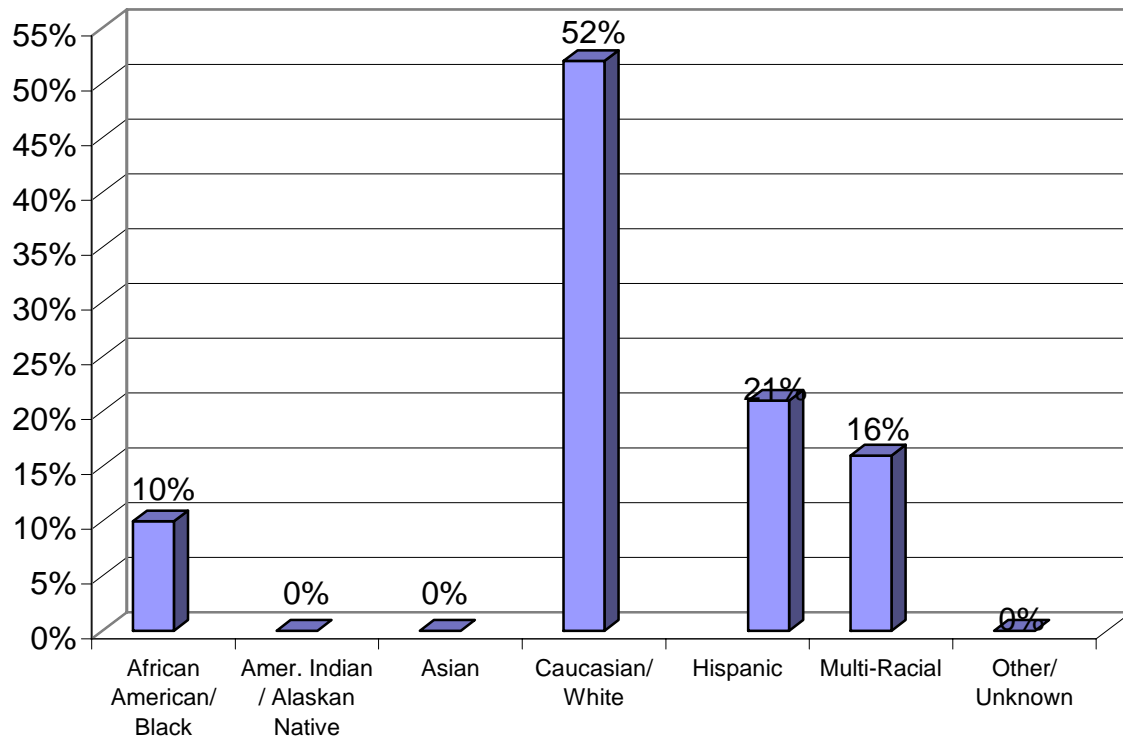
PSN Figure 1. Gender of Children and Youth Served (n=675)



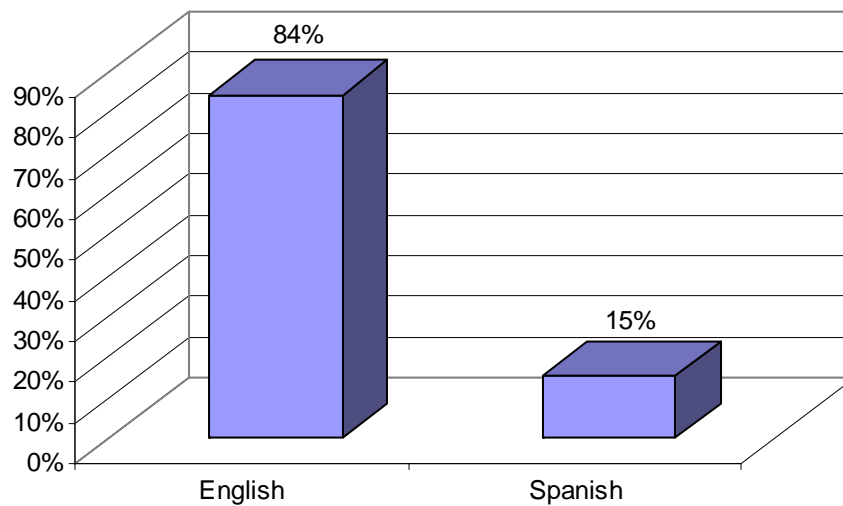
PSN Figure 2. Age Range of Children and Youth Served (n=675)



PSN Figure 3. Race and Ethnicity of Children and Youth Served (n=675)



PSN Figure 4. Primary Language of Children and Youth Served (n=675)



PSN Table 1. Ten Most Frequent Reasons Families Called (n=285)

	Family Presenting Problems	Percent
1	Family Stress	74
2	Access to Services	69
3	Behavior Problems	67
4	School Problem/Issue	62
5	Mental Health Problem/Issue-Other	46
6	Developmental Delay	36
7	Parenting Problems	28
8	Cultural Barriers	20
9	Request for Placement	18
10	Recreational Needs	15

Note: Valid percents reported; Cumulative percents exceed 100%, as multiple problems may be present.

PSN Table 2. Number and Percentage of Discharged Children and Youth (n=675)

Discharge	N	%
Children Discharged	547	81

Note: Valid percents reported. Discharge Placement and Reason for PSN not collected