

**DCYF Annual Report 2007:  
Tables and Figures for Selected Performance Indicators**

**Comprehensive Emergency Services (CES)  
Family Preservation Services (FPP)  
Project Early Start (PES)  
Youth Diversionary Programs (YDP)  
Outreach & Tracking Programs (O&T)  
Residential Programs (RES)  
Emergency Shelter Programs (SH)  
Specialized Foster Care (SFC)  
Children's Intensive Services (CIS)  
Child and Adolescent Service System Project (CASSP)  
Project HOPE (HOPE)  
Parent Support Network (PSN)**

**May 30, 2008**

## Table of Contents

Demographic Characteristics of Children and Families Served in All Programs .....	6
Comprehensive Emergency Services (CES).....	8
Family Preservation Programs (FPP).....	15
Project Early Start (PES) .....	20
Youth Diversionary Programs (YDP).....	28
Outreach and Tracking Services (O&T).....	34
Residential Services (RES).....	40
Emergency Shelter Services (SH).....	46
Specialized Foster Care (SFC).....	52
Children’s Intensive Services (CIS).....	60
Child & Adolescent Service System Program (CASSP) .....	66
Project HOPE.....	71
Parent Support Network (PSN).....	76

## List of Tables and Figures

### Demographic Characteristics of Children and Families Served- All Programs

Table 1. Demographic Characteristics of Children and Families Served in FY07.....	7
---	---

### Comprehensive Emergency Services (CES)

Figure 1. Gender of Children and Youth Served.....	9
Figure 2. Age Range of Children and Youth Served.....	9
Figure 3. Race and Ethnicity of Children and Youth Served .....	10
Figure 4. Primary Language Spoken at Home.....	10
Table 1. Ten Most Frequent Presenting Problems of Children and Youth Served.....	11
Table 2. Ten Most Frequent Presenting Problems of Families.....	11
Table 3. Discharge Reasons of Children and Youth Served and Discharged.....	12
Table 4. Discharge Placement of Children and Youth Served and Discharged .....	12
Table 5. Percent of Ratings in Each NCFAS Domain at Intake and Discharge .....	13
Figure 5. Percent of Families Showing Change in NCFAS Ratings .....	14

### Family Preservation Programs (FPP)

Figure 1. Gender of Children and Youth Served.....	16
Figure 2. Age Range of Children and Youth Served.....	16
Figure 3. Race and Ethnicity of Children and Youth Served .....	17
Figure 4. Primary Language Spoken at Home.....	17
Table 1. Ten Most Frequent Presenting Problems of Children and Youth Served.....	18
Table 2. Ten Most Frequent Presenting Problems of Families.....	18
Table 3. Discharge Reasons of Children and Youth Served and Discharged.....	19
Table 4. Discharge Placement of Children and Youth Served and Discharged .....	19

### Project Early Start (PES)

Figure 1. Gender of Children and Youth Served.....	21
Figure 2. Age Range of Children and Youth Served.....	21
Figure 3. Race and Ethnicity of Children and Youth Served .....	22
Figure 4. Primary Language Spoken at Home.....	22
Table 1. Ten Most Frequent Presenting Problems of Children and Youth Served.....	23
Table 2. Ten Most Frequent Presenting Problems of Families.....	23
Table 3. Discharge Reasons of Children and Youth Served and Discharged.....	24
Table 4. Discharge Placement of Children and Youth Served and Discharged .....	24
Table 5. Ages & Stages – Overall Baseline Assessment of Children Who Did and Did Not Meet the Age-Appropriate Developmental Milestones .....	25
Table 6. Ages & Stages – Subsample Comparison of Children Experiencing Changes in ASQ Domains .....	26
Table 7. Parental Role Performance on the Child Well-Being Scale – Comparison of Means and Standard Deviations at Annual Baseline Assessment and Annual Final Assessment .....	27

### Youth Diversionary Programs (YDP)

Figure 1. Gender of Children and Youth Served.....	29
Figure 2. Age Range of Children and Youth Served.....	29
Figure 3. Race and Ethnicity of Children and Youth Served .....	30
Figure 4. Primary Language Spoken at Home.....	30
Table 1. Ten Most Frequent Presenting Problems of Children and Youth Served.....	31

Table 2. Ten Most Frequent Presenting Problems of Families.....	31
Table 3. Discharge Reasons of Children and Youth Served and Discharged.....	32
Table 4. Discharge Placement of Children and Youth Served and Discharged .....	32
Table 5. Child and Youth School Grades and Attendance .....	33
 Outreach and Tracking Services (O&T)	
Figure 1. Gender of Children and Youth Served .....	35
Figure 2. Age Range of Children and Youth Served.....	35
Figure 3. Race and Ethnicity of Children and Youth Served .....	36
Figure 4. Primary Language Spoken at Home.....	36
Table 1. Ten Most Frequent Presenting Problems of Children and Youth Served.....	37
Table 2. Ten Most Frequent Presenting Problems of Families.....	37
Table 3. Discharge Reasons of Children and Youth Served and Discharged.....	38
Table 4. Discharge Placement of Children and Youth Served and Discharged .....	38
Table 5. Child and Youth School Grades and Attendance .....	39
 Residential Services (RES)	
Figure 1. Gender of Children and Youth Served .....	41
Figure 2. Age Range of Children and Youth Served.....	41
Figure 3. Race and Ethnicity of Children and Youth Served .....	42
Figure 4. Primary Language Spoken at Home.....	42
Table 1. Ten Most Frequent Presenting Problems of Children and Youth Served.....	43
Table 2. Ten Most Frequent Presenting Problems of Families.....	43
Table 3. Discharge Reasons of Children and Youth Served and Discharged.....	44
Table 4. Discharge Placement of Children and Youth Served and Discharged .....	44
Table 5. Child and Youth School Grades and Attendance .....	45
Table 6. Children and Youth Average GAF Scores and Changes Over Time .....	45
 Emergency Shelter Services (SH)	
Figure 1. Gender of Children and Youth Served .....	47
Figure 2. Age Range of Children and Youth Served.....	47
Figure 3. Race and Ethnicity of Children and Youth Served .....	48
Figure 4. Primary Language Spoken at Home.....	48
Table 1. Ten Most Frequent Presenting Problems of Children and Youth Served.....	49
Table 2. Ten Most Frequent Presenting Problems of Families.....	49
Table 3. Discharge Reasons of Children and Youth Served and Discharged.....	50
Table 4. Discharge Placement of Children and Youth Served and Discharged .....	50
Table 5. Child and Youth School Attendance .....	51
Table 6. Children and Youth Average GAF Scores and Changes Over Time .....	51
 Specialized Foster Care (SFC)	
Figure 1. Gender of Children and Youth Served .....	53
Figure 2. Age Range of Children and Youth Served.....	53
Figure 3. Race and Ethnicity of Children and Youth Served .....	54
Figure 4. Primary Language Spoken at Home.....	54
Table 1. Ten Most Frequent Presenting Problems of Children and Youth Served.....	55
Table 2. Ten Most Frequent Presenting Problems of Families.....	55
Table 3. Discharge Reasons of Children and Youth Served and Discharged.....	56

Table 4. Discharge Placement of Children and Youth Served and Discharged .....	56
Table 5. Child and Youth School Grades and Attendance .....	57
Table 6. Children and Youth Average GAF Scores and Changes Over Time .....	57
Table 7. Ages & Stages – Overall Baseline Annual Assessment Comparison of Children Who Did and Did Not Meet the Age-Appropriate Developmental Milestones .....	58
Table 8. Ages & Stages – Subsample Comparison of Children Experiencing Changes in ASQ Domains .....	59
Children’s Intensive Services (CIS)	
Figure 1. Gender of Children and Youth Served .....	61
Figure 2. Age Range of Children and Youth Served .....	61
Figure 3. Race and Ethnicity of Children and Youth Served .....	62
Table 1. Frequency of Axis IV Diagnoses Domains .....	63
Table 2. Discharge Status of Children and Youth Served .....	63
Table 3. Discharge Referral of Children and Youth Served and Discharged .....	64
Table 4. Discharge Placement .....	64
Table 5. Children and Youth’s M-CGAS Scores and Changes Over Time .....	65
Child & Adolescent Service System Program (CASSP)	
Figure 1. Gender of Children and Youth Served .....	67
Figure 2. Age Range of Children and Youth Served .....	67
Figure 3. Race and Ethnicity of Children and Youth Served .....	68
Figure 4. Primary Language Spoken at Home .....	68
Table 1. Ten Most Frequent Presenting Problems of Children and Youth Served .....	69
Table 2. Discharge Reasons of Children and Youth Served and Discharged .....	70
Table 3. Discharge Placement of Children and Youth Served and Discharged .....	70
Project HOPE	
Figure 1. Gender of Children and Youth Served .....	72
Figure 2. Age Range of Children and Youth Served .....	72
Figure 3. Race and Ethnicity of Children and Youth Served .....	73
Figure 4. Primary Language Spoken at Home .....	73
Table 1. Ten Most Frequent Presenting Problems of Children and Youth Served .....	74
Table 2. Discharge Reasons of Children and Youth Served and Discharged .....	75
Table 3. Discharge Placement of Children and Youth Served and Discharged .....	75
Parent Support Network (PSN)	
Figure 1. Gender of Children and Youth Served .....	77
Figure 2. Age Range of Children and Youth Served .....	77
Figure 3. Race and Ethnicity of Children and Youth Served .....	78
Figure 4. Primary Language Spoken at Home .....	78
Table 1. Ten Most Frequent Family Reasons for Calling .....	79
Table 2. Number and Percentage of Discharged Children and Youth .....	79

**Demographic Characteristics  
of Children and Families Served in All Programs**

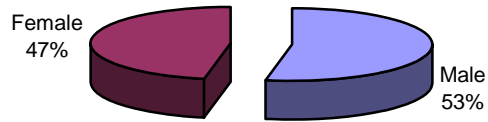
**Table 1. Demographic Characteristics of Children and Families Served in FY07**

		CES N= 2513		FPP N= 329		PES N=473		YDP N=331		O&T N=1044		RES N=1308		SH N=875		SFC N=292		CIS N=3189		CASSP N=1883		HOPE N=258		PSN N=469	
		N	%	N	%	N	%	N	%	N	%	N	%	N	%	N	%	N	%	N	%	N	%	N	%
Gender	Male	1326	53	155	47	249	53	170	51	628	60	813	62	346	39	136	47	1905	60	901	67	216	85	231	49
	Female	1187	47	174	53	224	47	161	49	416	40	495	38	529	61	156	53	1265	40	443	33	37	15	237	51
Age Range	0-5 years	949	38	203	62	473	100	0	0	5	<1	12	1	121	14	105	36	478	15	159	13	5	2	35	7
	6-11 years	829	33	89	27	0	0	22	7	47	5	130	10	64	7	81	28	1208	38	500	40	22	9	146	31
	12-15 years	529	21	31	9	0	0	212	64	530	51	470	36	415	47	64	22	1157	36	393	31	46	20	123	26
	16-18years	178	7	6	2	0	0	97	29	446	43	595	46	272	31	36	12	340	11	209	17	158	67	117	25
	19+ years	28	1	0	0	0	0	0	0	16	2	101	8	3	<1	6	2	1	<1	6	<1	4	2	39	8
Race/Ethnicity	African American/ Black	300	12	60	18	50	11	45	14	186	18	308	24	199	23	62	21	294	9	147	11	57	23	41	9
	American Indian/ Alaskan Native	63	3	0	0	7	1	1	<1	7	1	12	1	7	1	3	1	22	1	21	2	7	3	3	1
	Asian/Pacific Islander	24	1	0	0	63	13	7	2	23	2	32	2	26	3	2	1	24	1	10	1	6	2	1	<1
	Caucasian/White	1173	47	144	44	162	34	186	56	470	45	691	53	473	54	181	62	1566	49	783	59	89	36	235	50
	Hispanic	803	32	95	29	153	32	80	24	247	24	183	14	108	12	15	5	690	22	255	19	81	32	104	22
	Multiracial	101	4	30	9	38	8	10	3	46	4	38	3	22	2	15	5	353	11	84	6	6	2	38	8
	Unknown/Other	49	2	0	0	0	0	2	1	65	6	44	3	40	5	14	5	236	7	26	2	5	2	14	3
Primary Language*	English	1875	74	276	84	302	64	281	85	808	77	812	89	569	85	111	93	-	-	1265	95	224	91	358	76
	Spanish	552	22	53	16	99	21	46	14	147	14	83	9	83	12	6	5	-	-	43	3	21	9	88	19
	Portuguese	20	1	0	0	1	<1	0	0	4	<1	8	1	2	<1	1	1	-	-	3	<1	0	0	2	<1
	Hmong	0	0	0	0	29	6	0	0	1	<1	1	<1	1	<1	0	0	-	-	0	0	0	0	0	0
	Chinese	0	0	0	0	0	0	0	0	0	0	0	0	1	<1	0	0	-	-	0	0	0	0	0	0
	Creole	49	2	0	0	4	1	3	1	23	2	1	<1	1	<1	2	2	-	-	18	1	0	0	0	0
	Russian	0	0	0	0	0	0	0	0	0	0	1	<1	2	<1	0	0	-	-	0	0	0	0	0	0
	French	0	0	0	0	0	0	0	0	0	0	0	0	2	<1	0	0	-	-	0	0	0	0	0	0
	Khmer	8	<1	0	0	32	7	0	0	7	1	3	<1	3	<1	0	0	-	-	0	0	0	0	0	0
		Other	18	1	0	0	6	1	1	<1	54	5	6	1	4	1	0	0	-	-	5	<1	2	1	5

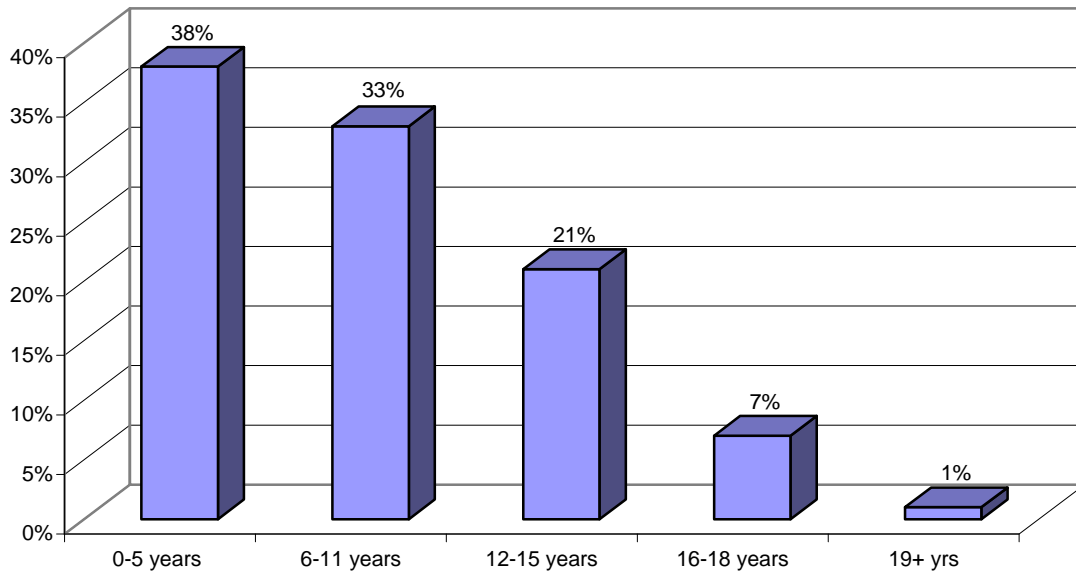
Note: Valid percents are reported. Percents may not equal 100 due to rounding error. Gender was missing for the following providers: CIS (n=19, 0.6%), CASSP (n=539, 29%), HOPE (n=5, 2%), PSN (n=1, <1%). Age ranges were missing for the following providers: CIS (n=5, 0.2%), CASSP (n=616, 33%), HOPE (n=23, 9%), PSN (n=9, 2%), and Race/Ethnicity was missing for CIS (n=4, 0.1%), CASSP (n= 557, 30%), HOPE (n=7, 3%), PSN (n=33, 7%). Primary Language was missing for CASSP (n=549, 29%), HOPE (n=11, 4%), PSN (n=16, 3%).  
 \*Primary language not collected by CIS.

## **Comprehensive Emergency Services (CES)**

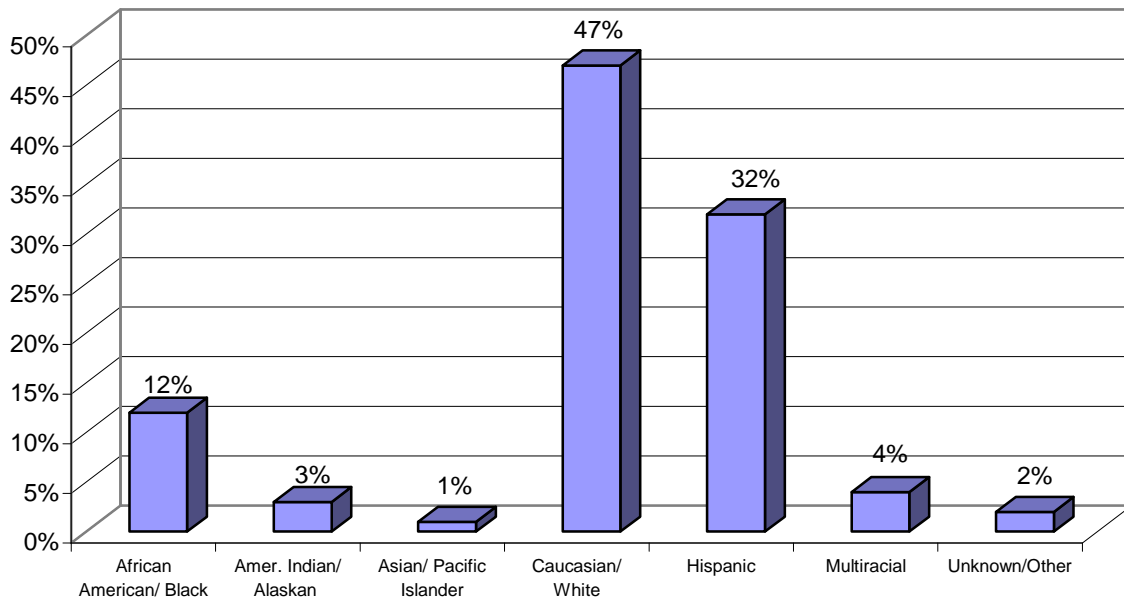
**CES Figure 1. Gender of Children and Youth Served (n =2513)**



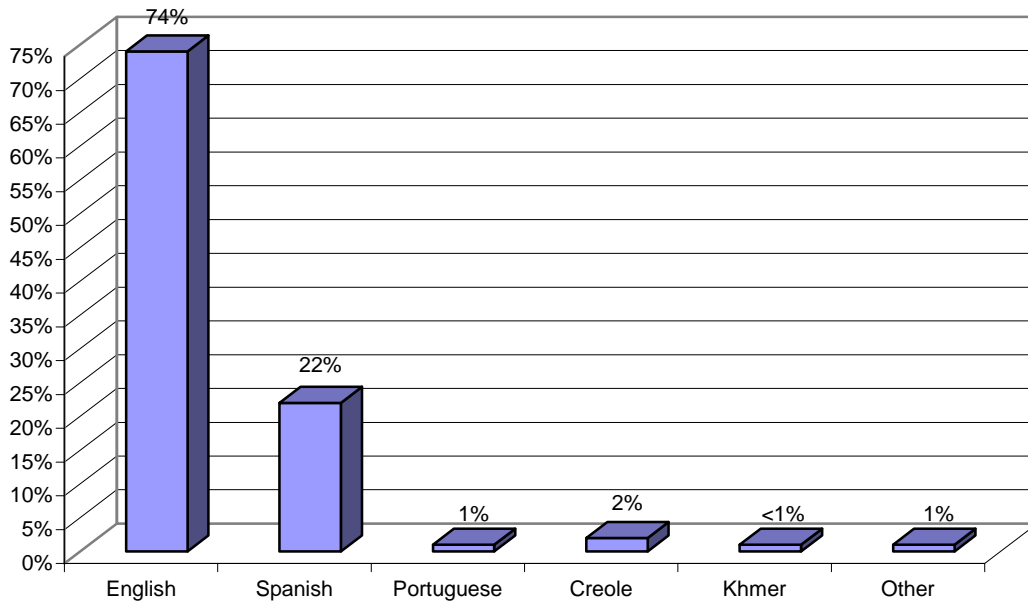
**CES Figure 2. Age Range of Children and Youth Served (n=2513)**



**CES Figure 3. Race and Ethnicity of Children and Youth Served (n=2513)**



**CES Figure 4. Primary Language Spoken at Home (n=2513)**



**CES Table 1. Ten Most Frequent Presenting Problems of Children and Youth Served (n=2103)**

	<b>Child Presenting Problems</b>	<b>Percent</b>
<b>1</b>	Family Violence/Stress	52
<b>2</b>	Behavioral Problems	33
<b>3</b>	Relationship Problem/Issue	23
<b>4</b>	Mental Health Problem/Issue-Other	17
<b>5</b>	School Problem/Issue	17
<b>6</b>	Anger/Aggression	16
<b>7</b>	Abuse-Emotional	10
<b>8</b>	Out of Parental Control	10
<b>9</b>	Hyperactivity/Attention Deficit	9
<b>10</b>	Anxiety	9

*Note: Valid percents reported for New Admissions within FY07; Cumulative percents exceed 100%, as multiple problems may be present.*

**CES Table 2. Ten Most Frequent Presenting Problems of Families (n=1020)**

	<b>Family Presenting Problems</b>	<b>Percent</b>
<b>1</b>	Family Stress	68
<b>2</b>	Parenting Problems	62
<b>3</b>	Behavioral Problems	48
<b>4</b>	Mental Health Problem/Issue-Other	42
<b>5</b>	Financial Problem/Unemployment	38
<b>6</b>	School Problems/Issue	30
<b>7</b>	Access to Services	26
<b>8</b>	Housing Issues	22
<b>9</b>	Health Problem/Disability	18
<b>10</b>	Domestic Violence	16

*Note: Valid percents reported for New Admissions within FY07; Cumulative percents exceed 100%, as multiple problems may be present.*

**CES Table 3. Discharge Reasons of Children and Youth Served and Discharged (n=2513)**

<b>Discharge Reasons</b>	<b>N</b>	<b>%</b>
<i>Children Discharged</i>	2,138	85
5/10 Days Notice	0	0
Adjudicated/Re-Offended	5	17
Child Aged Out of Program	0	0
Court Ordered	6	1
Goals Accomplished	1235	58
Left Without Notice/AMA/AWOL	88	4
Moved Out of State/Area	70	3
Refused Services	122	6
Time-Limit Reached	504	24
Other	108	5

*Note: Valid percents reported.*

**CES Table 4. Discharge Placement of Children and Youth Served and Discharged (n=2513)**

<b>Discharge Placement</b>	<b>N</b>	<b>%</b>
<i>Children Discharged</i>	2,138	85
Adult Corrections	0	0
CIS	50	2
DCYF-DAS Evaluation	2	<1
DCYF- Foster Care	2	<1
Emancipation/Adoption	0	0
Family Court	1	<1
Group Home	60	3
Home- Parent/Guardian	1501	70
Home- Relatives	417	20
Job Corps	0	0
More Intensive Program	18	1
Mental Health Services	74	3
Psychiatric Hospitalization	1	<1
Residential Placement	1	<1
Shelter	2	<1
Specialized Foster Care	0	0
Supervised Ind. Living	0	0
Training School (RITS)	0	0
Other	9	<1

*Note: Valid percents reported.*

## Child and Family Outcomes

Child and family outcomes are assessed using the North Carolina Family Assessment Scale, or NCFAS. The NCFAS is administered at intake and discharge and assesses five domains of family functioning. The *home environment* domain refers to housing stability and habitability, community safety, income/employment, financial management, food and nutrition, personal hygiene, transportation, and the learning environment. The *parenting capabilities* domain involves supervision of children, disciplinary practices, provision of developmental/enrichment opportunities, parent/caregiver mental health, parent/caregiver physical health, and parent/caregiver use of drugs/alcohol. The *family interactions* domain includes bonding with children, expectations of the children, mutual support within the family, and the relationship between parents/caregivers. The *family safety* domain refers to the presence of child abuse (physical, sexual, emotional), the presence of child neglect, and the presence of domestic violence between parents/caregivers. Finally, the *child well-being* domain includes children’s mental health and behavior, their school performance, their relationships with parents, siblings, and peers, and their cooperation/motivation to maintain family ties.

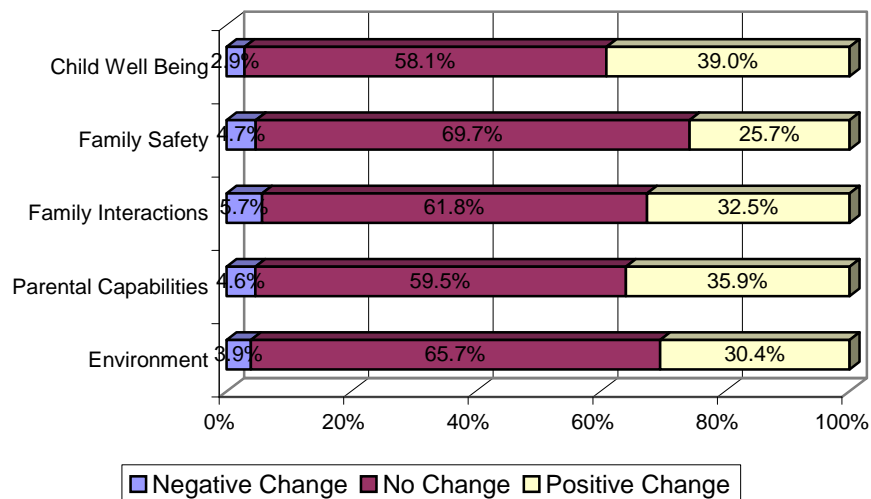
Families are rated in each domain using a 6-point scale ranging from –3 (“serious problem”) to +2 (“clear strength”). A comparison of the ratings from the intake and discharge assessments shows changes over time. As shown in Table 5, there is a consistent movement from problems to strengths across all domains from intake to discharge, indicating that families are improving following the provision of CES.

**CES Table 5. Percent of ratings in each NCFAS domain at intake and discharge (n=901)**

	<b>Serious Problem (-3)</b>	<b>Moderate Problem (-2)</b>	<b>Mild Problem (-1)</b>	<b>Baseline / Adequate (0)</b>	<b>Mild Strength (+1)</b>	<b>Clear Strength (+2)</b>
<b>Home Environment</b>						
<i>Intake</i>	1.7	8.5	14.9	42.4	20.0	12.4
<i>Discharge</i>	0.6	4.9	10.8	35.7	31.9	16.1
<b>Parental Capabilities</b>						
<i>Intake</i>	1.9	6.2	19.3	48.0	16.6	8.1
<i>Discharge</i>	1.0	3.2	11.5	41.6	29.4	13.3
<b>Family Interactions</b>						
<i>Intake</i>	1.9	7.2	20.3	47.0	14.0	9.6
<i>Discharge</i>	0.8	3.8	15.7	40.7	26.4	12.7
<b>Family Safety</b>						
<i>Intake</i>	1.4	5.0	10.7	48.9	18.6	15.5
<i>Discharge</i>	0.9	1.6	6.4	43.4	28.7	19.0
<b>Child Well-Being</b>						
<i>Intake</i>	2.6	8.7	25.1	43.8	12.4	7.4
<i>Discharge</i>	1.0	5.2	14.4	43.0	22.7	13.7

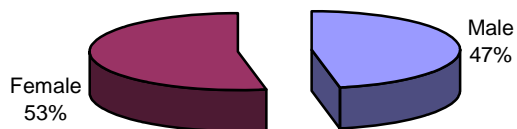
Figure 5 below depicts the amount of positive, negative, and no change that is found from intake to discharge for all domains. Although a majority of families show no significant change over time, significant positive changes are found in all domains, ranging from 25.7 percent to 39.0 percent. In addition, relatively few families (2.9% to 5.7%) show negative changes from intake to discharge following receipt of CES.

**CES Figure 5. Percent of Families Showing Change in NCFAS Ratings (n=901)**

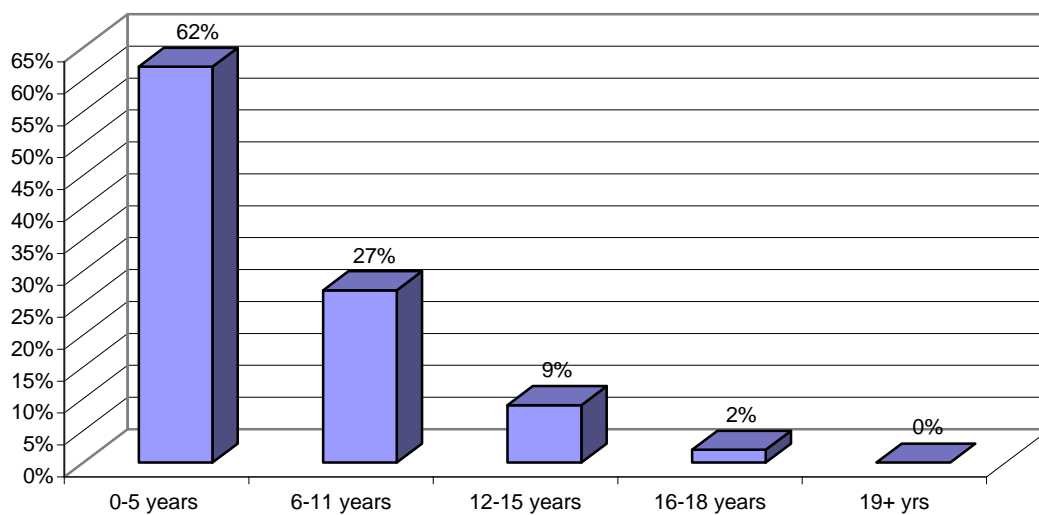


## **Family Preservation Programs (FPP)**

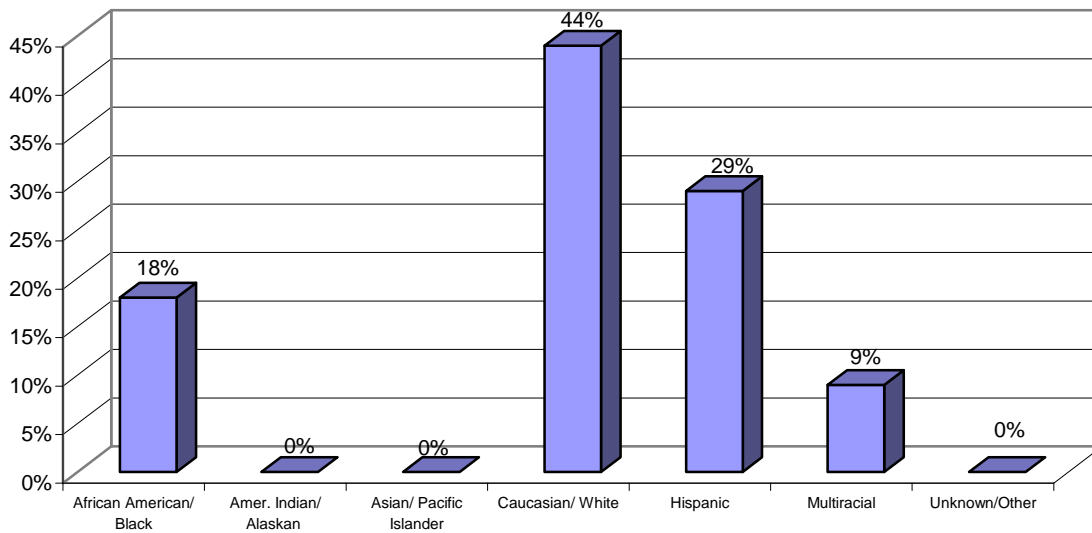
**FPP Figure 1. Gender of Children and Youth Served (n=329)**



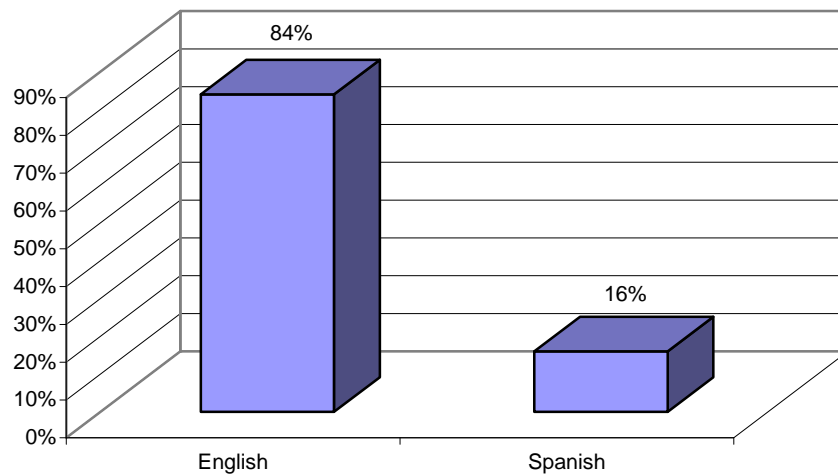
**FPP Figure 2. Age Range of Children and Youth Served (n=329)**



**FPP Figure 3. Race and Ethnicity of Children and Youth Served (n=329)**



**FPP Figure 4. Primary Language Spoken at Home (n=329)**



**FPP Table 1. Ten Most Frequent Presenting Problems of Children and Youth Served (n=329)**

	<b>Child Presenting Problems</b>	<b>Percent</b>
<b>1</b>	Neglect	61
<b>2</b>	Family Violence/Stress	19
<b>3</b>	Behavioral Problems	16
<b>4</b>	Prenatal Drug Exposure	12
<b>5</b>	Alcohol/Drug Use/Abuse	9
<b>6</b>	Abuse-Physical	8
<b>7</b>	Abuse-Emotional	5
<b>8</b>	Anger/Aggression	5
<b>9</b>	Anxiety	4
<b>10</b>	Mental Health Problem/Issue-Other	4

*Note: Valid percents reported for New Admissions within FY07; Cumulative percents exceed 100%, as multiple problems may be present.*

**FPP Table 2. Ten Most Frequent Presenting Problems of Families (n=117)**

	<b>Family Presenting Problems</b>	<b>Percent</b>
<b>1</b>	Alcohol/Drug Use/Abuse	58
<b>2</b>	Parenting Problems	56
<b>3</b>	Neglect	44
<b>4</b>	Family Stress	32
<b>5</b>	Financial Problem/Unemployment	29
<b>6</b>	Mental Health Problem/Issue-Other	26
<b>7</b>	Transportation Needs	24
<b>8</b>	Housing Issues	20
<b>9</b>	Domestic Violence	17
<b>10</b>	Criminal Involvement	11

*Note: Valid percents reported for New Admissions within FY07; Cumulative percents exceed 100%, as multiple problems may be present.*

**FPP Table 3. Discharge Reasons of Children and Youth Served and Discharged (n=329)**

<b>Discharge Reasons</b>	<b>N</b>	<b>%</b>
<i>Children Discharged</i>	134	41
5/10 Days Notice	0	0
Adjudicated/Re-Offended	0	0
Child Aged Out of Program	0	0
Court Ordered	0	0
Goals Accomplished	48	63
Left Without Notice/AMA/AWOL	9	12
Moved Out of State/Area	0	0
Refused Services	19	25
Time-Limit Reached	6	8
Other	18	24

*Note: Valid percents reported.*

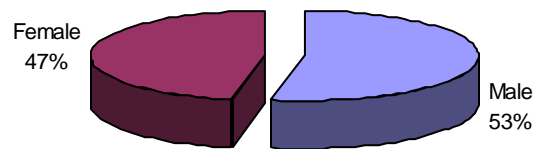
**FPP Table 4. Discharge Placement of Children and Youth Served and Discharged (n=329)**

<b>Discharge Placement</b>	<b>N</b>	<b>%</b>
<i>Children Discharged</i>	134	41
Adult Corrections	0	0
CIS	0	0
DCYF-DAS Evaluation	0	0
DCYF- Foster Care	26	19
Emancipation/Adoption	0	0
Family Court	0	0
Group Home	4	3
Home- Parent/Guardian	96	72
Home- Relatives	4	3
Job Corps	0	0
More Intensive Program	0	0
Mental Health Services	0	0
Psychiatric Hospitalization	1	1
Residential Placement	0	0
Shelter	0	0
Specialized Foster Care	0	0
Supervised Ind. Living	0	0
Training School (RITS)	0	0
Other	3	2

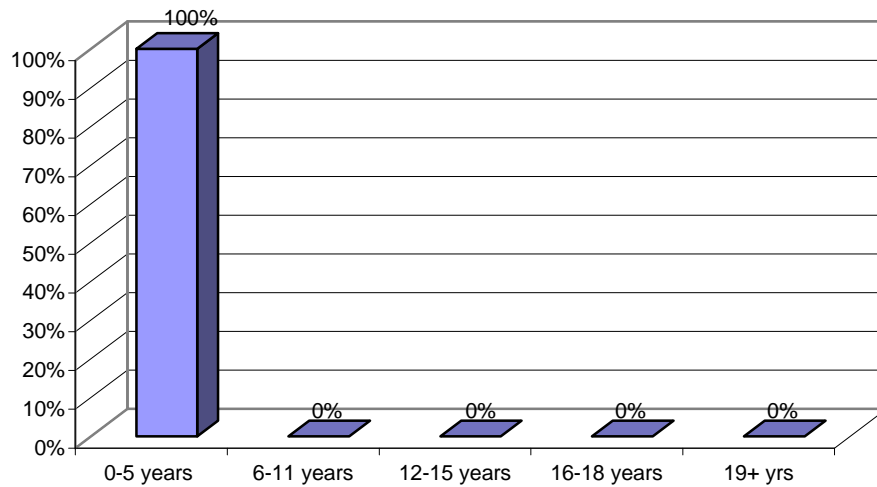
*Note: Valid percents reported.*

## **Project Early Start (PES)**

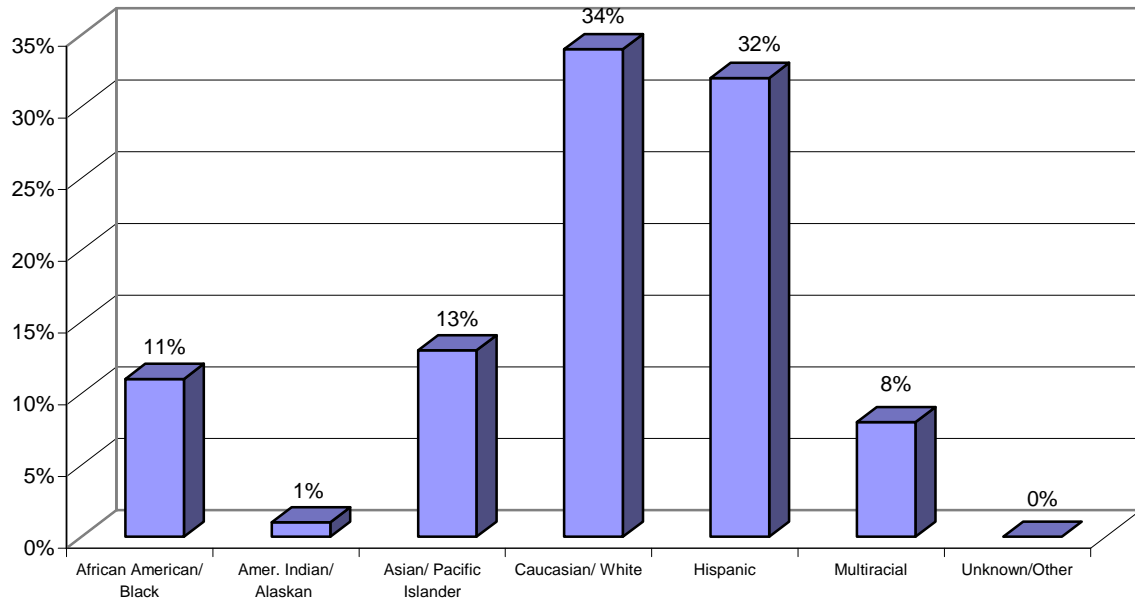
**PES Figure 1. Gender of Children and Youth Served (n=473)**



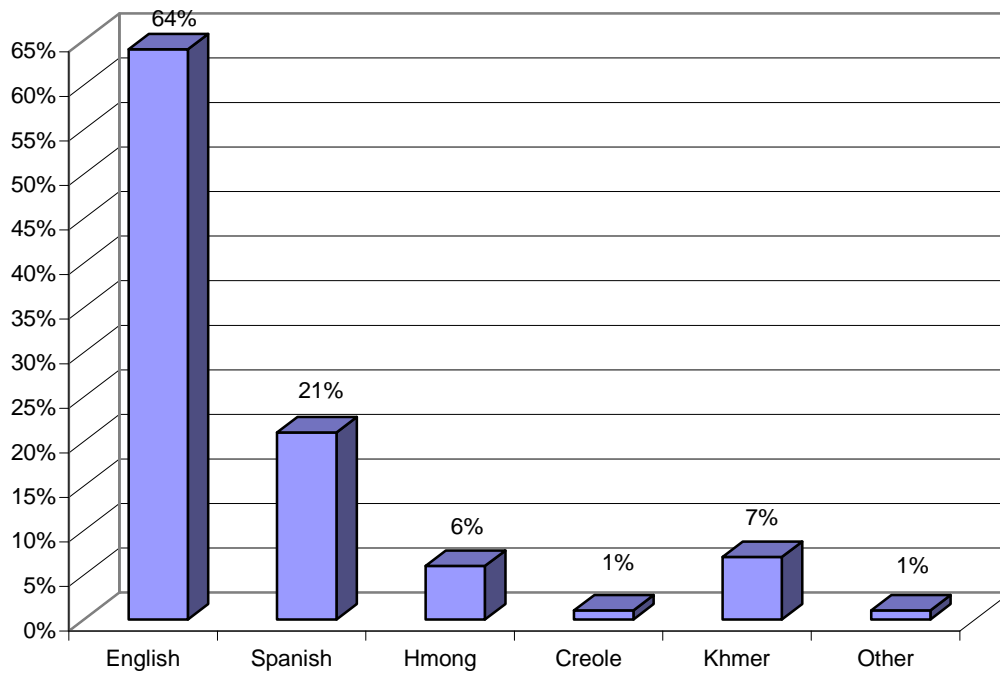
**PES Figure 2. Age Range of Children and Youth Served (n=473)**



**PES Figure 3. Race and Ethnicity of Children Served (n=473)**



**PES Figure 4. Primary Language Spoken at Home (n=473)**



**PES Table 1. Ten Most Frequent Presenting Problems of Children and Youth Served (n=222)**

	<b>Child Presenting Problems</b>	<b>Percent</b>
<b>1</b>	Family Violence/Stress	58
<b>2</b>	Developmental Problem/Issue	23
<b>3</b>	Other	18
<b>4</b>	Behavioral Problems	17
<b>5</b>	Developmental Delay	13
<b>6</b>	Language/Speech Disorder	11
<b>7</b>	Anger/Aggression	6
<b>8</b>	Health Problem/Disability	5
<b>9</b>	Prenatal Drug Exposure	4
<b>10</b>	Neglect	3

*Note: Valid percents reported for New Admissions within FY07; Cumulative percents exceed 100%, as multiple problems may be present.*

**PES Table 2. Ten Most Frequent Presenting Problems of Families (n=219)**

	<b>Family Presenting Problems</b>	<b>Percent</b>
<b>1</b>	Family Stress	72
<b>2</b>	Financial Problem/Unemployment	65
<b>3</b>	Parenting Problems	61
<b>4</b>	Transportation Needs	37
<b>5</b>	Housing Issues	32
<b>6</b>	Access To Services	31
<b>7</b>	Child Care Needs	29
<b>8</b>	Mental Health Problem/Issue-Other	29
<b>9</b>	Recreational Needs	28
<b>10</b>	Social Isolation	22

*Note: Valid percents reported for New Admissions within FY07; Cumulative percents exceed 100%, as multiple problems may be present.*

**PES Table 3. Discharge Reasons of Children and Youth Served and Discharged (n=473)**

<b>Discharge Reasons</b>	<b>N</b>	<b>%</b>
<i>Children Discharged</i>	264	56
5/10 Days Notice	1	<1
Adjudicated/Re-Offended	0	0
Child Aged Out of Program	38	14
Court Ordered	0	0
Goals Accomplished	75	28
Left Without Notice/AMA/AWOL	26	10
Moved Out of State/Area	40	15
Refused Services	39	15
Time-Limit Reached	5	2
Other	40	15

*Note: Valid percents reported.*

**PES Table 4. Discharge Placement of Children and Youth Served and Discharged (n=473)**

<b>Discharge Placement</b>	<b>N</b>	<b>%</b>
<i>Children Discharged</i>	264	56
Adult Corrections	0	0
CIS	0	0
DCYF-DAS Evaluation	0	0
DCYF- Foster Care	7	3
Emancipation/Adoption	0	0
Family Court	0	0
Group Home	0	0
Home- Parent/Guardian	239	91
Home- Relatives	5	2
Job Corps	0	0
More Intensive Program	3	1
Mental Health Services	0	0
Psychiatric Hospitalization	0	0
Residential Placement	0	0
Shelter	0	0
Specialized Foster Care	0	0
Supervised Ind. Living	0	0
Training School (RITS)	0	0
Other	9	3

*Note: Valid percents reported.*

## Child and Youth Outcomes

### Developmental Outcomes

Children’s developmental outcomes were assessed using the Ages & Stages Questionnaire (ASQ). This is completed in conjunction with the parent/caregiver and provides developmental information on a variety of children’s skills, such as: communication, gross motor, fine motor, problem solving, and personal-social. Table 5 below shows the extent to which children did or did not meet age-appropriate developmental milestones upon entry into PES. As shown, 3.9 to 15.1 percent of children did not meet milestones in at least one area of development when they entered PES.

**PES Table 5. Ages & Stages -- Overall Baseline Assessments of Children Who Did and Did Not Meet the Age-Appropriate Developmental Milestones (n=396)**

Overall Baseline Annual Assessment (N=385)				
	Children Who Did Not Meet Their Age-Appropriate Developmental Milestones		Children Who Did Meet Their Age-Appropriate Developmental Milestones	
	Valid Percents	N	Valid Percents	N
Communication	15.1	58	84.9	327
Gross Motor	4.4	17	95.6	368
Fine Motor	3.9	15	96.1	370
Problem Solving	12.8	48	87.2	326
Personal-Social	7.0	27	93.0	357

*Note: Missing Data for the following Milestones: Communication (n=11, 2.8%), Gross Motor (n=11, 2.8%), Fine Motor (n=11, 2.8%), Problem Solving (n=22, 5.6%) Personal-Social (n=12, 3.0%)*

Table 6 below shows the extent to which those children who were discharged from PES and completed the Ages & Stages Questionnaire did or did not meet specific developmental milestones. Since not all children had completed the program, this represents a subsample of all children and families served. As is shown in Table 6, the great majority of children sustained developmental gains they had demonstrated at the baseline assessment (74.8% to 93.1%). In addition, meaningful percentages of children met new developmental milestones at the final assessment after not having met those milestones at the baseline assessment (6.0% out of 15.2%, 3.2% out of 5.0%, 2.3% out of 4.1%, 6.9% out of 9.2%, and 4.1% out of 5.5%). However, a significant percentage of children remained at sub-typical development at the final assessment (ranging from 1.4% to 9.2%), and a small percentage of children lost developmental gains observed at baseline (ranging from 2.8% to 10.1%). Overall, children were found to be challenged most in meeting developmental milestones for communication skills at both the baseline and final assessment, and least challenged by meeting milestones for gross motor skills.

**PES Table 6. Ages & Stages – Subsample Comparison of Children Experiencing Changes in ASQ Domains (n=396)**

	Subsample of Overall Sample: Includes All Cases that have a Baseline Annual Assessment and a Final Annual Assessment					
	Percent of Children Who <i>Did Not</i> Meet Their Age-Appropriate Developmental Milestones at the Annual Baseline Assessment			Percent of Children Who <i>Did</i> Meet Age-Appropriate Developmental Milestones at the Annual Baseline Assessment		
	Annual Baseline Assessment	Final Annual Assessment*		Annual Baseline Assessment	Final Annual Assessment*	
		Met New Developmental Milestones	Remained at Sub-typical development		Sustained Developmental Gains	Lost Developmental Gains
Communication	15.2	6.0	9.2	84.9	74.8	10.1
Gross Motor	5.0	3.2	1.8	95.0	92.2	2.8
Fine Motor	4.1	2.3	1.8	95.9	93.1	2.8
Problem Solving	9.2	6.9	2.3	90.8	82.1	8.7
Personal-Social	5.5	4.1	1.4	94.5	91.2	3.2

*Note: Missing Data for the following Milestones: Communication (n=178, 44.9%), Gross Motor (n=178, 44.9%), Fine Motor (n=178, 44.9%), Problem Solving (n=178, 44.9%) Personal-Social (n=179, 45.2%)*

### Parental Role Performance

Parental role performance is assessed using Child Well-Being Scales. Four subscales are assessed: parental acceptance of/affection for children, parental approval of children, parental consistency of discipline, and parental teaching/stimulating of children. The mean average of all subscales is then used to compute a total composite score for the emotional care of children, with higher scores indicating higher role performance. Parental responses are assessed using six levels of performance, ranging from “adequate” to “several inadequate” with the highest score possible being 100. Scores were available for 73-86 of 165 parents (44-52%, depending on the subscale) who had completed the program and both assessments. As shown in Table 7 on the following page, parental role performance improved for each subscale, with statistically significant improvements found in expectations of their child, consistency of disciplining of their child, teaching/stimulation of their child, and their overall composite score. These scores indicate that parental role performance improves following receipt of PES.

**PES Table 7. Parental Role Performance on the Child Well-Being Scale - Comparison of Means and Standard Deviations at Annual Baseline Assessment and Annual Final Assessment**

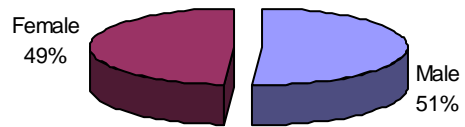
Scales	Annual Baseline Assessment		Final Annual Assessment		
	N	Mean	SD	Mean	SD
Parental Acceptance of / Affection for Children	83	83.37	20.36	84.22	20.14
Parental Approval of Children	82	83.28	11.61	84.84	12.01
Parental Expectations of Children**	85	83.42	13.51	87.78	13.55
Parental Consistency of Discipline**	75	82.64	11.88	86.72	11.52
Parental Teaching / Stimulating of Children*	84	85.63	12.06	87.96	11.81
Total Composite Score for The Emotional Care of Children**	73	83.17	11.08	85.99	11.71

\* p <.05 level    \*\* p < .01 level

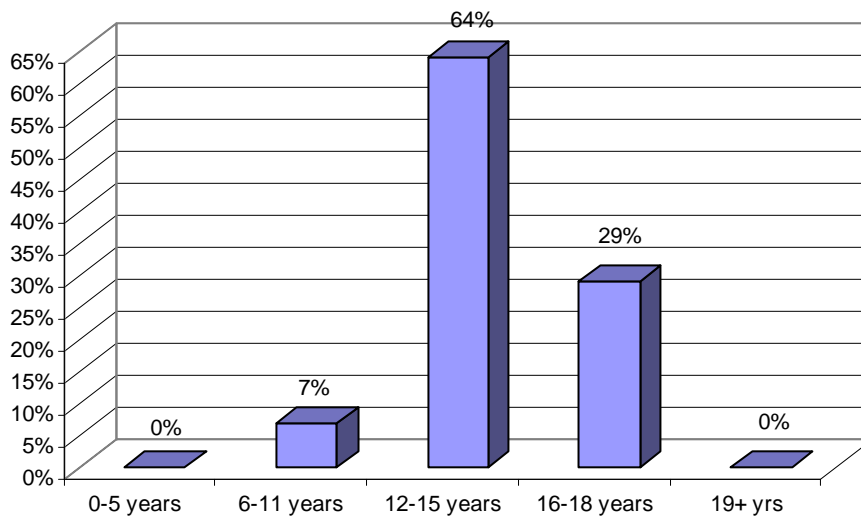
Note: High mean scores indicate high role performance

## **Youth Diversionary Programs (YDP)**

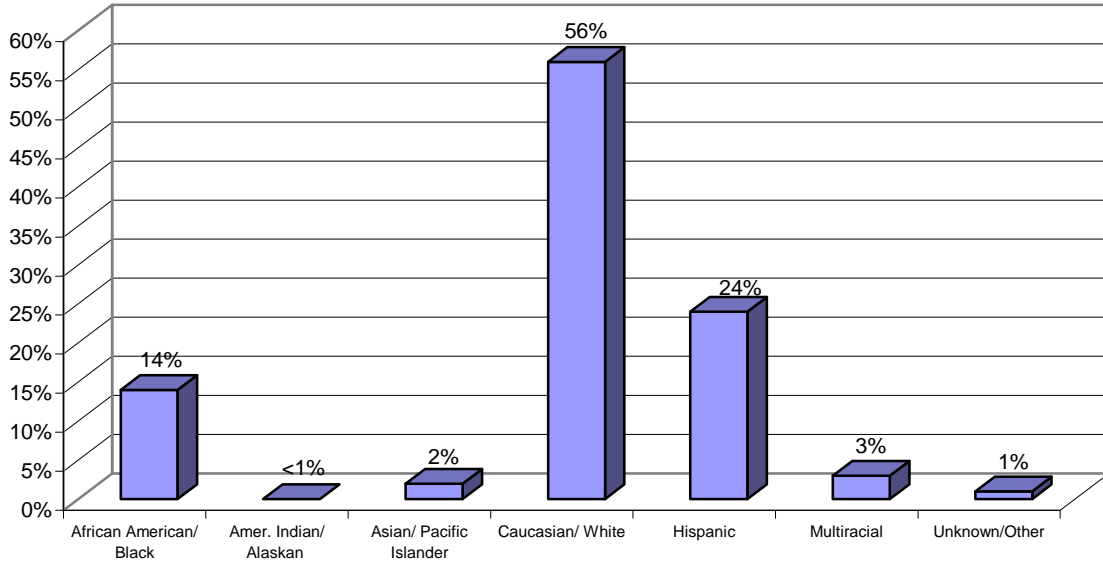
**YDP Figure 1. Gender of Children and Youth Served (n=331)**



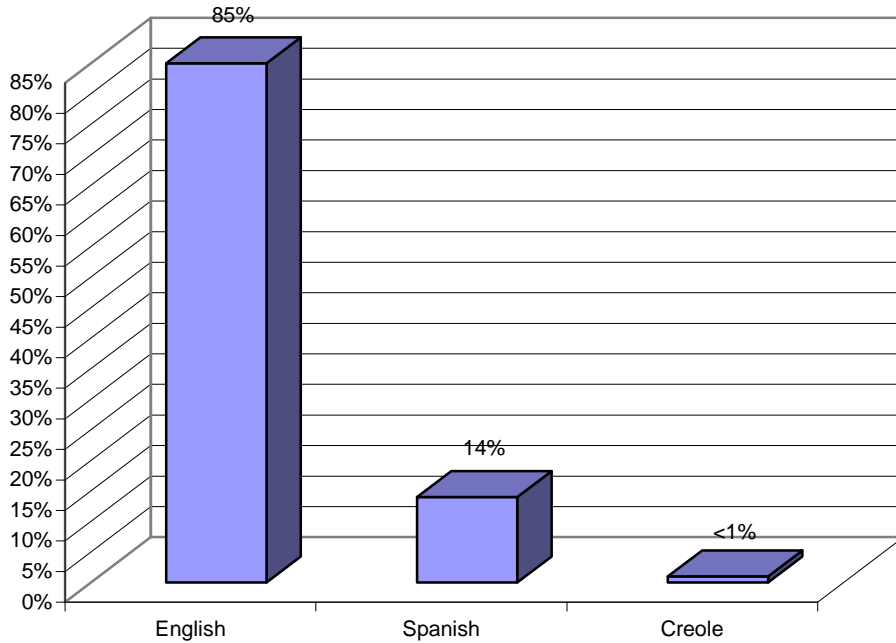
**YDP Figure 2. Age Range of Children and Youth Served (n=331)**



**YDP Figure 3. Race and Ethnicity of Children and Youth Served (n=331)**



**YDP Figure 4. Primary Language Spoken at Home (n=331)**



**YDP Table 1. Ten Most Frequent Presenting Problems of Children and Youth Served (n=264)**

	<b>Child Presenting Problems</b>	<b>Percent</b>
<b>1</b>	School Problems/Issue	58
<b>2</b>	Behavioral Problem	55
<b>3</b>	Anger/Aggression	48
<b>4</b>	Family Violence/Stress	33
<b>5</b>	Mental Health Problem/Issue-Other	27
<b>6</b>	Out of Parental Control	22
<b>7</b>	Criminal/Illegal Activity	18
<b>8</b>	Delinquency	15
<b>9</b>	Depression/Withdrawal	12
<b>10</b>	Relationship Problem/Issue	12

*Note: Valid percents reported for New Admissions within FY07; Cumulative percents exceed 100%, as multiple problems may be present.*

**YDP Table 2. Ten Most Frequent Presenting Problems of Families (n=220)**

	<b>Family Presenting Problems</b>	<b>Percent</b>
<b>1</b>	Family Stress	55
<b>2</b>	School Problem/Issue	47
<b>3</b>	Parenting Problems	44
<b>4</b>	Behavioral Problems	41
<b>5</b>	Mental Health Problem/Issue	28
<b>6</b>	Access to Services	14
<b>7</b>	Alcohol/Drug Use/Abuse	13
<b>8</b>	Criminal Involvement	8
<b>9</b>	Financial Problem/Unemployment	7
<b>10</b>	Cultural/Language Barriers	6

*Note: Valid percents reported for New Admissions within FY07; Cumulative percents exceed 100%, as multiple problems may be present.*

**YDP Table 3. Discharge Reasons of Children and Youth Served and Discharged (n=331)**

<b>Discharge Reasons</b>	<b>N</b>	<b>%</b>
<i>Children Discharged</i>	261	79
5/10 Days Notice	1	<1
Adjudicated/Re-Offended	6	2
Child Aged Out of Program	0	0
Court Ordered	2	1
Goals Accomplished	91	35
Left Without Notice/AMA/AWOL	0	0
Moved Out of State/Area	2	1
Refused Services	36	14
Time-Limit Reached	83	32
Other	40	15

*Note: Valid percents reported.*

**YDP Table 4. Discharge Placement of Children and Youth Served and Discharged (n=331)**

<b>Discharge Placement</b>	<b>N</b>	<b>%</b>
<i>Children Discharged</i>	261	79
Adult Corrections	0	0
CIS	6	2
DCYF-DAS Evaluation	0	0
DCYF- Foster Care	4	2
Emancipation/Adoption	2	1
Family Court	0	0
Group Home	4	2
Home- Parent/Guardian	223	85
Home- Relatives	11	4
Job Corps	0	0
More Intensive Program	0	0
Mental Health Services	0	0
Psychiatric Hospitalization	2	1
Residential Placement	0	0
Shelter	1	0
Specialized Foster Care	0	0
Supervised Ind. Living	0	0
Training School (RITS)	2	1
Other	6	2

*Note: Valid percents reported.*

## Child and Youth Outcomes

### School Grades and Attendance

Grades and school attendance are tracked for each child receiving youth diversionary services. Of the 331 children and youth receiving youth diversionary services, math grades were reported for 169 of the children and youth (51%), English grades were reported for 166 of the children and youth (50%), and reading grades were reported for 82 children and youth (25%). In addition, attendance was reported for 170 of the children and youth (51%).

As shown in Table 5 below, 62 to 65 percent of children and youth receive a grade of “C” or better in math, English, or reading during the period they are enrolled in youth diversionary services. In addition, 69 percent of children and youth attend school on a regular basis.

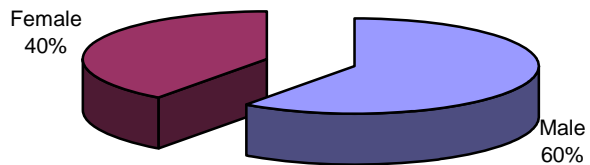
**YDP Table 5. Child and Youth School Grades and Attendance**

<b>FY07 Overall</b>			
	<b>Total No. of Grades/ Attendance Reported</b>	<b>Total No. of Grades/ Attendance That Met Criteria*</b>	<b>Percent</b>
Math	204	127	62
English	202	125	62
Reading	89	58	65
Attendance	206	143	69

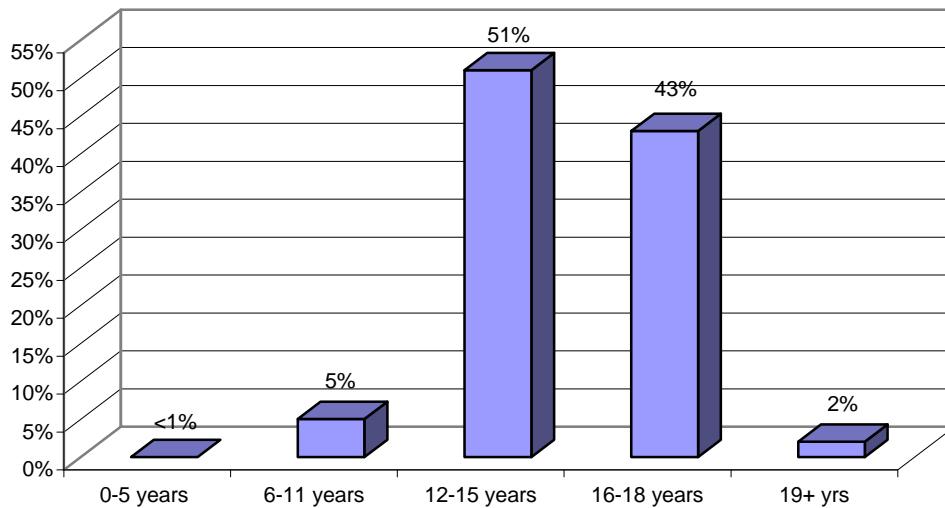
*Note: Valid percents reported \*Criteria was considered to have been met if a child or youth obtained a grade of “C” or better in a given subject and attended school at least 75% of the time.*

## **Outreach and Tracking Services (O&T)**

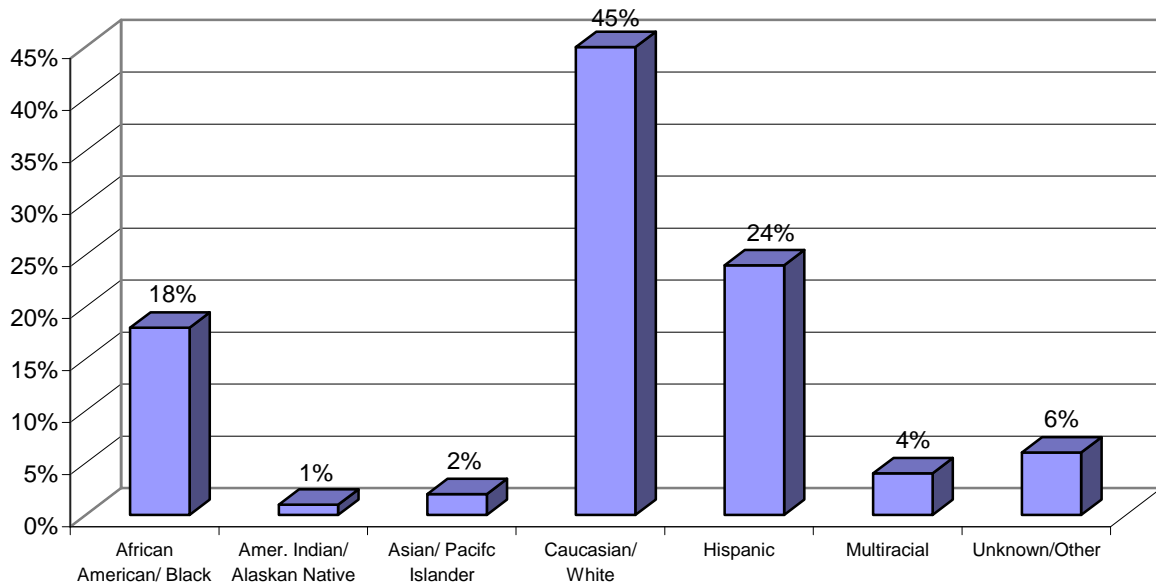
**O&T Figure 1. Gender of Children and Youth Served (n=1044)**



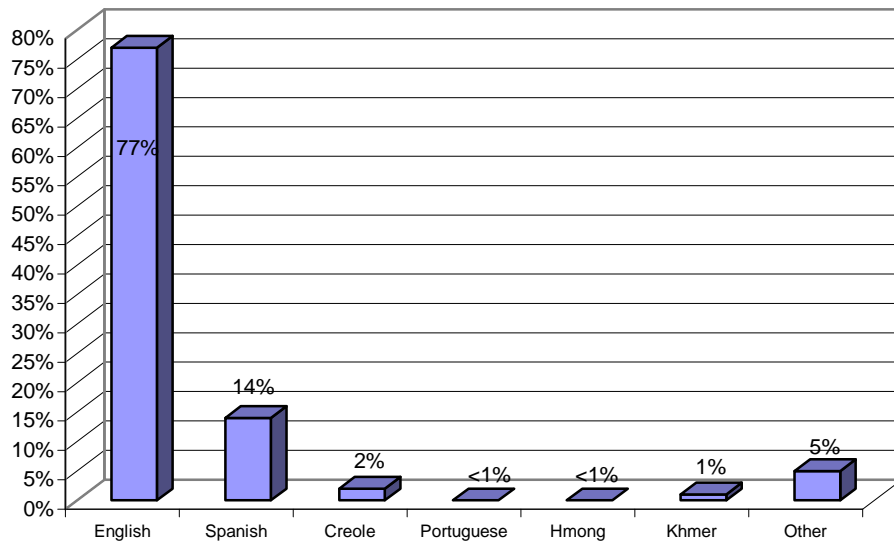
**O&T Figure 2. Age Range of Children and Youth Served (n=1044)**



**O&T Figure 3. Race and Ethnicity of Children and Youth Served (n=1044)**



**O&T Figure 4. Primary Language of Children and Youth Served (n=1044)**



**O&T Table 1. Ten Most Frequent Presenting Problems of Children and Youth Served (n=606)**

	<b>Child Presenting Problems</b>	<b>Percent</b>
<b>1</b>	School Problems/Issues	48
<b>2</b>	Family Violence/Stress	46
<b>3</b>	Out of Parental Control	40
<b>4</b>	Behavioral Problems	37
<b>5</b>	Anger/Aggression	31
<b>6</b>	Criminal/Illegal Activity	26
<b>7</b>	Relationship Problem/Issue	20
<b>8</b>	Alcohol/Drug Use/Abuse	16
<b>9</b>	Depression/Withdrawal	13
<b>10</b>	Hyperactivity/Attention Deficit	13

*Note: Valid percents reported for New Admissions within FY07; Cumulative percents exceed 100%, as multiple problems may be present.*

**O&T Table 2. Ten Most Frequent Presenting Problems of Families (n=577)**

	<b>Family Presenting Problems</b>	<b>Percent</b>
<b>1</b>	Family Stress	58
<b>2</b>	Parenting Problems	44
<b>3</b>	Financial Problem/Unemployment	35
<b>4</b>	School Problem/Issue	32
<b>5</b>	Behavioral Problems	30
<b>6</b>	Criminal Involvement	10
<b>7</b>	Alcohol/Drug Use/Abuse	9
<b>8</b>	Unsafe Home/Neighborhood	9
<b>9</b>	Mental Health Problem/Issue-Other	8
<b>10</b>	Domestic Violence	8

*Note: Valid percents reported for New Admissions within FY07; Cumulative percents exceed 100%, as multiple problems may be present.*

**O&T Table 3. Discharge Reasons of Children and Youth Served and Discharged (n=1044)**

<b>Discharge Reasons</b>	<b>N</b>	<b>%</b>
<i>Children Discharged</i>	681	65
5/10 Days Notice	3	0
Adjudicated/Re-Offended	37	5
Child Aged Out of Program	17	2
Court Ordered	55	8
Goals Accomplished	321	47
Left Without Notice/AMA/AWOL	25	4
Moved Out of State/Area	36	5
Refused Services	60	9
Time-Limit Reached	16	2
Other	111	16

*Note: Valid percents reported.*

**O&T Table 4. Discharge Placement of Children and Youth Served and Discharged (n=1044)**

<b>Discharge Placement</b>	<b>N</b>	<b>%</b>
<i>Children Discharged</i>	681	65
Adult Corrections	3	<1
CIS	2	<1
DCYF-DAS Evaluation	0	0
DCYF- Foster Care	5	1
Emancipation/Adoption	0	0
Family Court	4	1
Group Home	29	4
Home- Parent/Guardian	433	64
Home- Relatives	61	9
Job Corps	5	1
More Intensive Program	5	1
Mental Health Services	0	0
Psychiatric Hospitalization	9	1
Residential Placement	28	4
Shelter	14	2
Specialized Foster Care	0	0
Supervised Ind. Living	3	<1
Training School (RITS)	53	8
Other	27	4

*Note: Valid percents reported.*

## Child and Youth Outcomes

### School Grades and Attendance

Grades and school attendance are tracked for each child receiving outreach & tracking services. Of the 1,044 children and youth receiving outreach & tracking services, math grades were reported for 410 of the children and youth (39%), English grades were reported for 215 of the children and youth (21%), and reading grades were reported for 102 children and youth (10%). In addition, attendance was reported for 431 of the children and youth (41%).

As shown in Table 5 below, 50 to 53 percent of children and youth receive a grade of “C” or better in math, English, or reading during the period they are enrolled in outreach & tracking services. In addition, 59 percent of children and youth attend school on a regular basis.

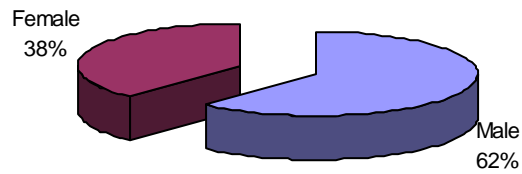
**O&T Table 5. Child and Youth School Grades and Attendance**

<b>FY07 Overall</b>			
	<b>Total No. of Grades/ Attendance Reported</b>	<b>Total No. of Grades/ Attendance That Met Criteria*</b>	<b>Percent</b>
Math	518	259	50
English	513	269	52
Reading	266	142	53
Attendance	521	306	59

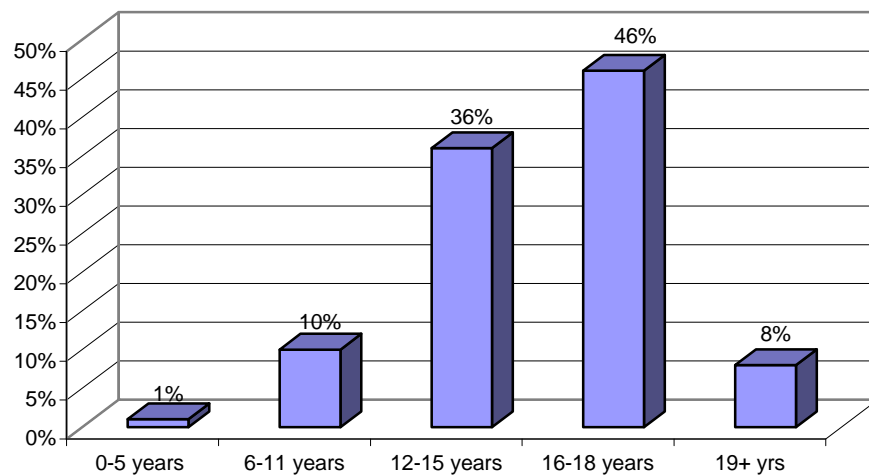
*Note: Valid percents reported \*Criteria was considered to have been met if a child or youth obtained a grade of “C” or better in a given subject and attended school at least 75% of the time.*

## **Residential Services (RES)**

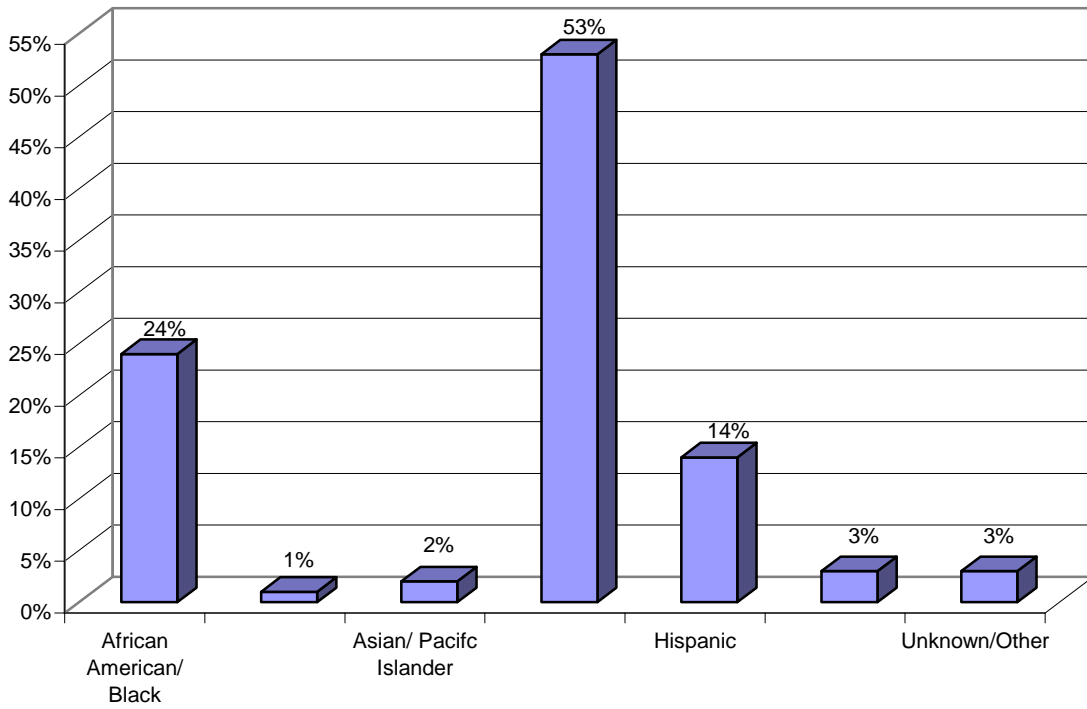
**RES Figure 1. Gender of Children and Youth Served (n=1,308)**



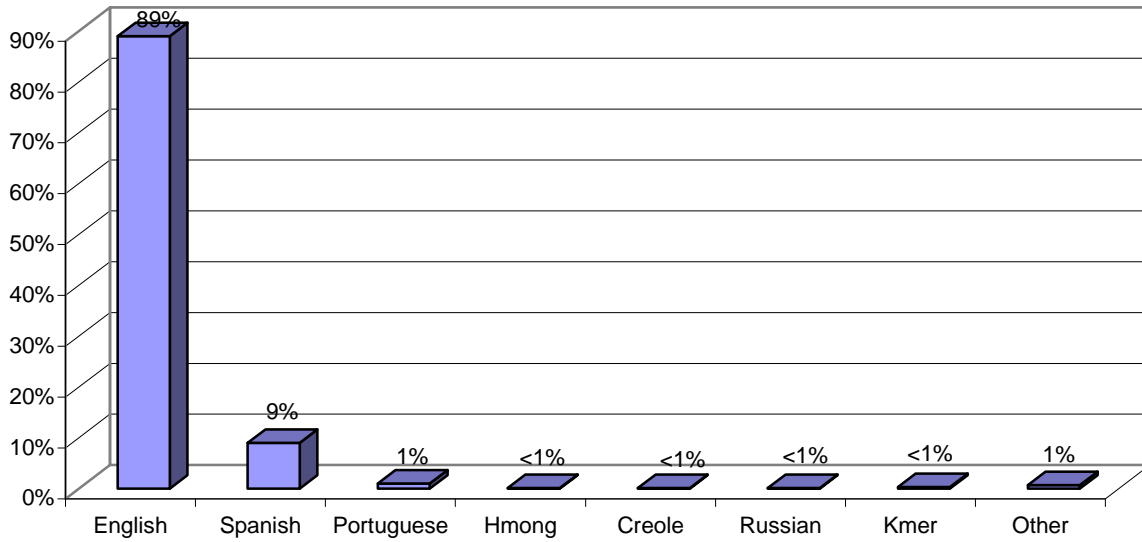
**RES Figure 2. Age Range of Children and Youth Served (n=1,308)**



**RES Figure 3. Race and Ethnicity of Children and Youth Served (n=1,308)**



**RES Figure 4. Primary Language of Children and Youth Served (n=915)**



**RES Table 1. Ten Most Frequent Presenting Problems of Children and Youth Served (n=915)**

	<b>Child Presenting Problems</b>	<b>Percent</b>
<b>1</b>	Behavioral Problems	59
<b>2</b>	School Problem/Issue	55
<b>3</b>	Anger	46
<b>4</b>	Out of Parental Control	40
<b>5</b>	Family Violence/Stress	40
<b>6</b>	Delinquency	39
<b>7</b>	Relationship Problem/Issue	34
<b>8</b>	Criminal/Illegal Activity	33
<b>9</b>	Depression/Withdrawal	30
<b>10</b>	Mental Health Problem/Issue-Other	28

*Note: Valid percents reported for New Admissions within FY07;  
Cumulative percents exceed 100%, as multiple problems may be present*

**RES Table 2. Ten Most Frequent Presenting Problems of Families (n=915)**

	<b>Family Presenting Problems</b>	<b>Percent</b>
<b>1</b>	Parenting Problems	70
<b>2</b>	Family Stress	66
<b>3</b>	Neglect	26
<b>4</b>	Alcohol/Drug Use/Abuse	24
<b>5</b>	Behavioral Problems	20
<b>6</b>	Financial Problem/Unemployment	20
<b>7</b>	Mental Health Problem/Issue-Other	19
<b>8</b>	Housing Issues	18
<b>9</b>	Abandonment	16
<b>10</b>	Domestic Violence	14

*Note: Valid percents reported for New Admissions within FY07;  
Cumulative percents exceed 100%, as multiple problems may be present*

**RES Table 3. Discharge Reasons of Children and Youth Served and Discharged (n=1,308)**

<b>Discharge Reasons</b>	<b>N</b>	<b>%</b>
<i>Children Discharged</i>	802	61
5/10 Days Notice	13	2
Adjudicated/Re-Offended	25	3
Child Aged Out of Program	18	2
Court Ordered	31	4
Goals Accomplished	322	40
Left Without Notice/AMA/AWOL	117	15
Moved Out of State/Area	14	2
Refused Services	33	4
Time-Limit Reached	2	<1
Other	227	28

*Note: Valid percents reported for Discharges within FY07*

**RES Table 4. Discharge Placement of Children and Youth Served and Discharged (n=1,308)**

<b>Discharge Placement</b>	<b>N</b>	<b>%</b>
<i>Children Discharged</i>	802	61
Adult Corrections	0	0
CIS	0	0
DCYF-DAS Evaluation	5	1
DCYF- Foster Care	33	4
Emancipation/Adoption	38	5
Family Court	0	0
Group Home	31	4
Home- Parent/Guardian	239	30
Home- Relatives	13	2
Job Corps	0	0
More Intensive Program	4	1
Mental Health Services	0	0
Psychiatric Hospitalization	15	2
Residential Placement	65	8
Shelter	7	1
Specialized Foster Care	11	1
Supervised Ind. Living	95	12
Training School (RITS)	57	7
Other	189	24

*Note: Valid percents reported*

## Child and Youth Outcomes

### School Grades and Attendance

Grades and school attendance are tracked for each child receiving residential services. Of the 1,308 children and youth receiving residential services, math grades were reported for 589 of the children and youth (45%), English grades were reported for 588 of the children and youth (45%), and reading grades were reported for 149 children and youth (11%). In addition, attendance was reported for 627 of the children and youth (48%).

As shown in Table 5 below, 77 to 82 percent of children and youth receive a grade of “C” or better in math, English, or reading during the period they are enrolled in residential services. In addition, 95 percent of children and youth attend school on a regular basis.

**RES Table 5. Child and Youth School Grades and Attendance**

FY07 Overall			
	Total No. of Grades/ Attendance Reported	Total No. of Grades/ Attendance That Met Criteria*	Percent
Math	1586	1218	77
English	1584	1217	77
Reading	900	740	82
Attendance	2658	2515	95

*Note: Valid percents reported \*Criteria was considered to have been met if a child or youth obtained a grade of “C” or better in a given subject and attended school at least 75% of the time.*

### Global Functioning

Global functioning for each child before and after receipt of residential services is assessed through the use of the Children’s Global Assessment of functioning Scale (CGAS) or the Global Assessment of Functioning (GAF) scale. Both scales provide a rating score from 1 (lowest) to 100 (highest) of current functioning of the child. Scores were available for 608 of the 1308 (46%) children and youth served. As shown below in Table 6, comparisons between children’s average initial scores upon entry into residential services and their current scores, which are taken, on average, about 256 days (or about 8.5 months) later, show that current scores are significantly higher. This difference is highly statistically significant, indicating that children and youth improve in their functioning following the receipt of residential services.

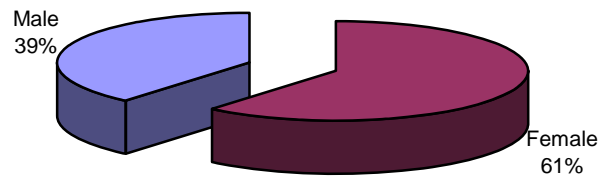
**RES Table 6. Children and Youth Average GAF Scores and Changes Over Time (n=608)**

FY07 Overall		
	Mean	SD
Initial Scores	54.31	10.15
Current Scores	57.30	11.03
Difference**	2.99	7.59

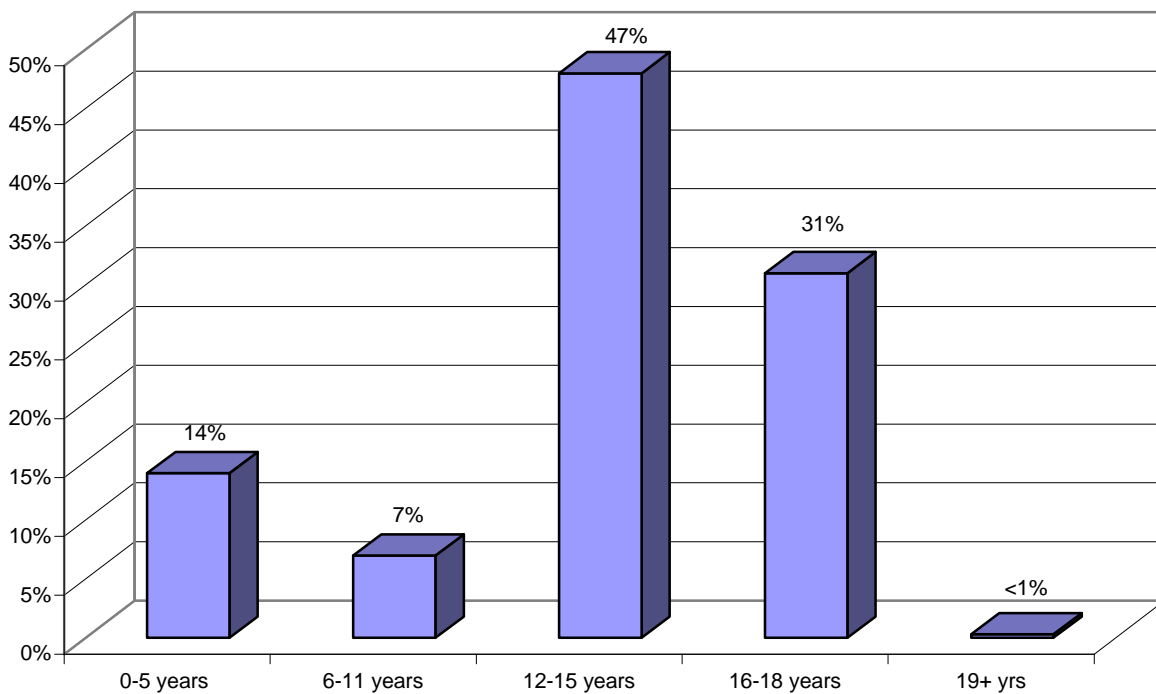
*Note: \*P<. 05, \*\*P<. 01, \*\*\*P<. 001*

## **Emergency Shelter Services (SH)**

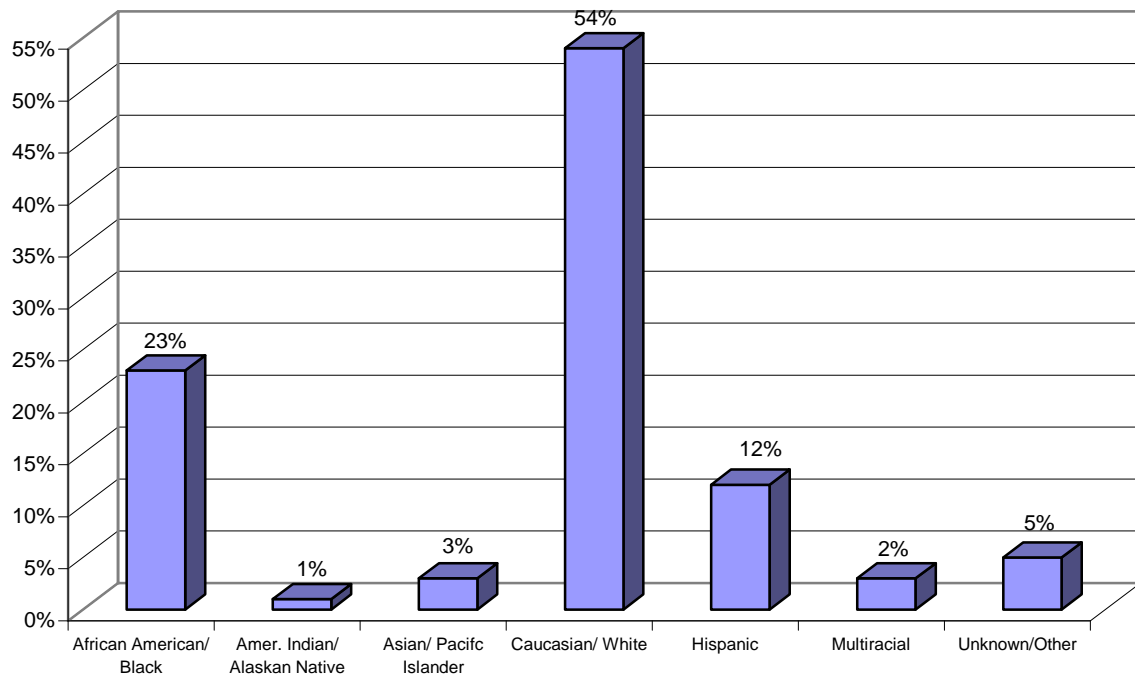
**SH Figure 1. Gender of Children and Youth Served (n=875)**



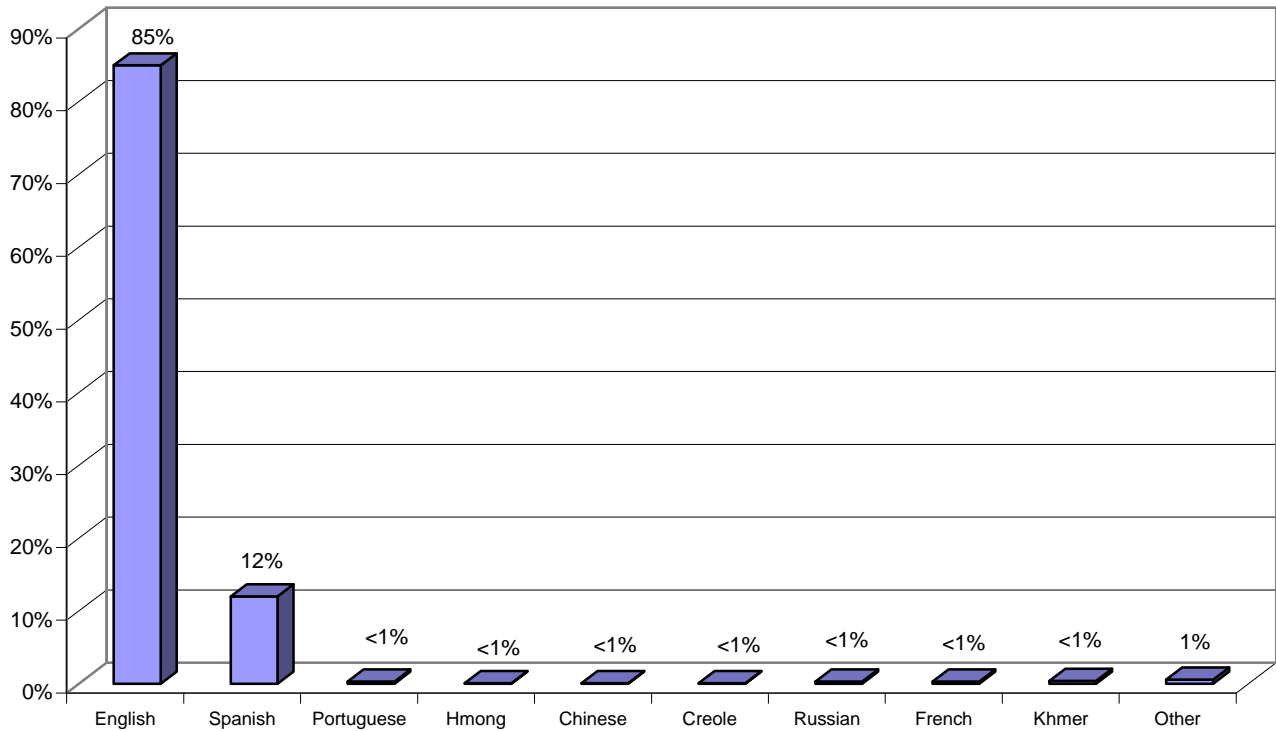
**SH Figure 2. Age Range of Children and Youth Served (n=875)**



**SH Figure 3. Race and Ethnicity of Children and Youth Served (n=875)**



**SH Figure 4. Primary Language of Children and Youth Served (n=668)**



**SH Table 1. Ten Most Frequent Presenting Problems of Children and Youth Served (n=668)**

	<b>Child Presenting Problems</b>	<b>Percent</b>
<b>1</b>	Behavioral Problems	55
<b>2</b>	School Problem/Issue	40
<b>3</b>	Family Violence/Stress	35
<b>4</b>	Anger	33
<b>5</b>	Out of Parental Control	33
<b>6</b>	Neglect	28
<b>7</b>	Relationship Problem/Issue	27
<b>8</b>	Delinquency	27
<b>9</b>	Anxiety	25
<b>10</b>	Other Presenting Problems	21

*Note: Valid percents reported for New Admissions within FY07;  
Cumulative percents exceed 100%, as multiple problems may be present*

**SH Table 2. Ten Most Frequent Presenting Problems of Families (n=668)**

	<b>Family Presenting Problems</b>	<b>Percent</b>
<b>1</b>	Parenting Problems	57
<b>2</b>	Family Stress	52
<b>3</b>	Neglect	29
<b>4</b>	Other Presenting Problems	25
<b>5</b>	Alcohol/Drug Use/Abuse	20
<b>6</b>	Death/Absence/Incapacity of Caregiver	16
<b>7</b>	Mental Health Problem/Issue-Other	14
<b>8</b>	Domestic Violence	13
<b>9</b>	Behavioral Problems	13
<b>10</b>	Criminal/Illegal Activity	12

*Note: Valid percents reported for New Admissions within FY07;  
Cumulative percents exceed 100%, as multiple problems may be present*

**SH Table 3. Discharge Reasons of Children and Youth Served and Discharged (n=875)**

<b>Discharge Reasons</b>	<b>N</b>	<b>%</b>
<i>Children Discharged</i>	784	90
5/10 Days Notice	3	<1
Adjudicated/Re-Offended	3	<1
Child Aged Out of Program	1	<1
Court Ordered	20	3
Goals Accomplished	389	50
Left Without Notice/AMA/AWOL	162	21
Moved Out of State/Area	3	<1
Refused Services	0	0
Time-Limit Reached	2	<1
Other	201	26

*Note: Valid percents reported for Discharges within FY07*

**SH Table 4. Discharge Placement of Children and Youth Served and Discharged (n=875)**

<b>Discharge Placement</b>	<b>N</b>	<b>%</b>
<i>Children Discharged</i>	784	90
Adult Corrections	0	0
CIS	0	0
DCYF-DAS Evaluation	18	2
DCYF- Foster Care	79	10
Emancipation/Adoption	7	1
Family Court	0	0
Group Home	49	6
Home- Parent/Guardian	201	26
Home- Relatives	25	3
Job Corps	0	0
More Intensive Program	2	<1
Mental Health Services	0	0
Psychiatric Hospitalization	18	2
Residential Placement	73	9
Shelter	24	3
Specialized Foster Care	24	3
Supervised Ind. Living	46	6
Training School (RITS)	15	2
Other	203	26

*Note: Valid percents reported.*

## Child and Youth Outcomes

### School Attendance

School attendance is tracked for each child receiving emergency shelter services. Of the 875 children and youth receiving emergency shelter services, attendance was reported for 363 of the children and youth (42%). As shown in Table 5 below, 81 percent of children and youth attend school on a regular basis. Since children and youth are enrolled in emergency shelter services for about two months or less on average, grades are not tracked by emergency shelter services providers.

**SH Table 5. Child and Youth School Attendance**

FY07 Overall		
Total No. of Attendance Reported	Total No. of Attendance That Met Criteria*	Percent
Attendance	436	81

*Note: Valid percents reported \*Criteria was considered to have been met if a child or youth attended school at least 75% of the time.*

### Global Functioning

Global functioning for each child before and after receipt of emergency shelter services is assessed through the use of the Children’s Global Assessment of functioning Scale (CGAS) or the Global Assessment of Functioning (GAF) scale. Both scales provide a rating score from 1 (lowest) to 100 (highest) of current functioning of the child. Scores were available for 192 of the 875 (22%) children and youth served. As shown below in Table 6, comparisons between children’s average initial scores upon entry into shelter services and their current scores, which are taken, on average, about 58 days (or about 2 months) later, show that current scores are significantly higher. This difference is highly statistically significant, indicating that children and youth improve in their functioning following the receipt of emergency shelter services.

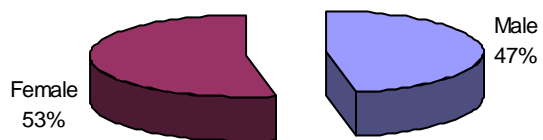
**SH Table 6. Children and Youth Average GAF Scores and Changes Over Time (n=192)**

FY07 Overall		
	Mean	SD
Initial Scores	57.48	9.74
Current Scores	58.63	9.60
Difference**	1.15	5.45

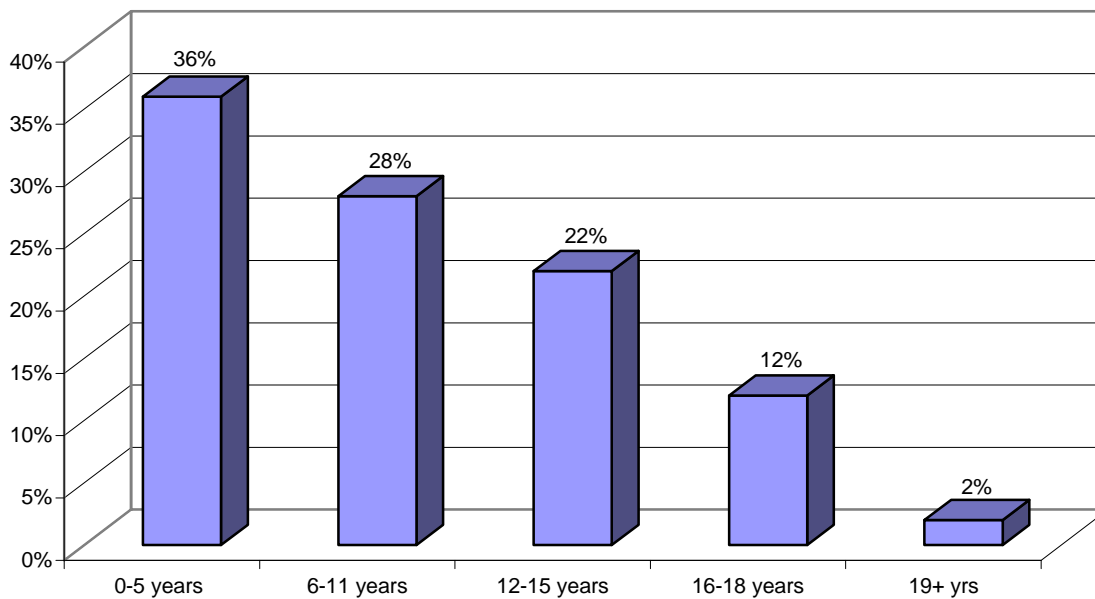
*Note: \*P<.05, \*\*P<.01, \*\*\*P<.001*

## **Specialized Foster Care (SFC)**

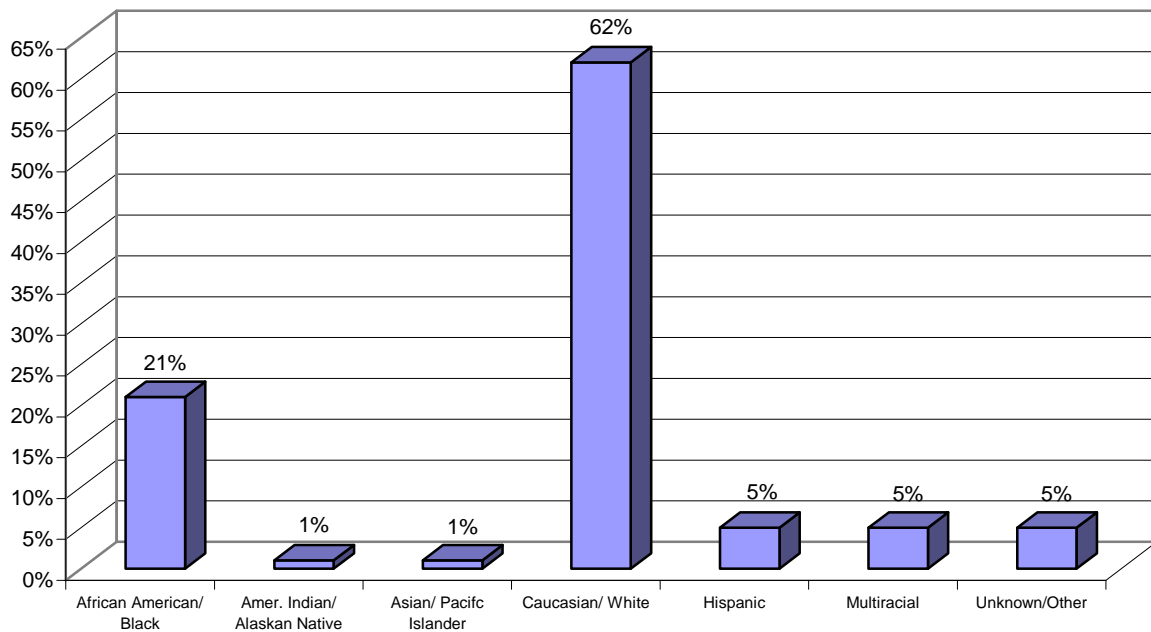
**SFC Figure 1. Gender of Children and Youth Served (n=292)**



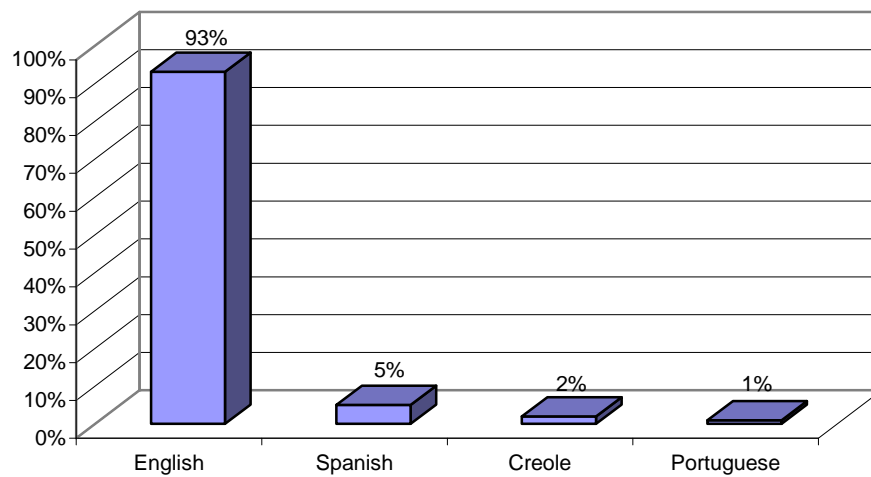
**SFC Figure 2. Age Range of Children and Youth Served (n=292)**



**SFC Figure 3. Race and Ethnicity of Children and Youth Served (n=292)**



**SFC Figure 4. Primary Language of Children and Youth Served (n=120)**



**SFC Table 1. Ten Most Frequent Presenting Problems of Children and Youth Served (n=120)**

	<b>Child Presenting Problems</b>	<b>Percent</b>
<b>1</b>	Neglect	80
<b>2</b>	Family Violence/Stress	25
<b>3</b>	School Problems/Issue	24
<b>4</b>	Emotional Abuse	24
<b>5</b>	Behavioral Problems	23
<b>6</b>	Physical Abuse	19
<b>7</b>	Anger	18
<b>8</b>	Abandonment	17
<b>9</b>	Out of Parental Control	17
<b>10</b>	Grief and Loss	15

*Note: Valid percents reported for New Admissions within FY07.*

*Cumulative percents exceed 100%, as multiple problems may be present.*

**SFC Table 2. Ten Most Frequent Presenting Problems of Families (n=120)**

	<b>Family Presenting Problems</b>	<b>Percent</b>
<b>1</b>	Neglect	61
<b>2</b>	Alcohol/Drug Use/Abuse	57
<b>3</b>	Parenting Problems	42
<b>4</b>	Family Stress	38
<b>5</b>	Mental Health Problem/Issue-Other	29
<b>6</b>	Criminal/Illegal Activity	26
<b>7</b>	Financial Problem/Unemployment	24
<b>8</b>	Domestic Violence	22
<b>9</b>	Death/Absence/Incapacity of Caregiver	18
<b>10</b>	Housing Issues	18

*Note: Valid percents reported for New Admissions within FY07 .*

*Cumulative percents exceed 100%, as multiple problems may be present.*

**SFC Table 3. Discharge Reasons of Children and Youth Served and Discharged (n=292)**

<b>Discharge Reasons</b>	<b>N</b>	<b>%</b>
<i>Children Discharged</i>	<i>141</i>	<i>48</i>
5/10 Days Notice	12	9
Adjudicated/Re-Offended	0	0
Child Aged Out of Program	2	1
Court Ordered	9	6
Goals Accomplished	71	50
Left Without Notice/AMA/AWOL	7	5
Moved Out of State/Area	1	1
Refused Services	2	1
Time-Limit Reached	1	1
Other	36	26

*Note: Valid percents reported*

**SFC Table 4. Discharge Placement of Children and Youth Served and Discharged (n=292)**

<b>Discharge Placement</b>	<b>N</b>	<b>%</b>
<i>Children Discharged</i>	<i>141</i>	<i>48</i>
Adult Corrections	0	0
CIS	0	0
DCYF-DAS Evaluation	0	0
DCYF- Foster Care	14	10
Emancipation/Adoption	34	24
Family Court	0	0
Group Home	4	3
Home- Parent/Guardian	46	33
Home- Relatives	9	6
Job Corps	0	0
More Intensive Program	2	1
Mental Health Services	0	0
Psychiatric Hospitalization	2	1
Residential Placement	6	4
Shelter	5	4
Specialized Foster Care	2	1
Supervised Ind. Living	1	1
Training School (RITS)	0	0
Other	16	11

*Note: Valid percents reported*

## Child and Youth Outcomes

### School Grades and Attendance

Grades and school attendance are tracked for each child receiving specialized foster care services. Of the 292 children and youth receiving specialized foster care services, math and English grades were reported for 135 of the children and youth (46%), and reading grades were reported for 51 children and youth (17%). In addition, attendance was reported for 173 of the children and youth (59%).

As shown in Table 5 below, 85 to 90 percent of children and youth receive a grade of “C” or better in math, English, or reading during the period they are enrolled in specialized foster care services. In addition, 99 percent of children and youth attend school on a regular basis.

**SFC Table 5. Child and Youth School Grades and Attendance**

FY07 Overall			
	Total No. of Grades/ Attendance Reported	Total No. of Grades/ Attendance That Met Criteria*	Percent
Math	285	248	87
English	282	239	85
Reading	111	100	90
Attendance	493	486	99

*Note: Valid percents reported \*Criteria was considered to have been met if a child or youth obtained a grade of “C” or better in a given subject and attended school at least 75% of the time.*

### Global Functioning

Global functioning for each child before and after receipt of specialized foster care services is assessed through the use of the Children’s Global Assessment of functioning Scale (CGAS) or the Global Assessment of Functioning (GAF) scale. Both scales provide a rating score from 1 (lowest) to 100 (highest) of current functioning of the child. Scores were available for 153 of the 292 (52%) children and youth served. As shown below in Table 6, comparisons between children’s average initial scores upon entry into specialized foster care services and their current scores show that current scores are significantly higher. This difference is highly statistically significant, indicating that children and youth improve in their functioning following the receipt of specialized foster care services.

**SFC Table 6. Children and Youth Average GAF Scores and Changes Over Time (n=153)**

FY07 Overall		
	Mean	SD
Initial Scores	60.03	8.19
Current Scores	64.40	10.38
Difference***	4.37	10.06

*Note: \*P<.05, \*\*P<.01, \*\*\*P<.001*

Developmental Outcomes

Children’s developmental outcomes were assessed using the Ages & Stages Questionnaire (ASQ). This is completed in conjunction with the parent/caregiver and provides developmental information on a variety of children’s skills, such as: communication, gross motor, fine motor, problem solving, and personal-social. Table 7 below shows the extent to which children did or did not meet age-appropriate developmental milestones upon entry into specialized foster care services. As shown, 5.7 to 20.8 percent of children did not meet milestones in at least one area of development when they entered specialized foster care services.

**SFC Table 7. Ages & Stages -- Overall Baseline Annual Assessment Comparison of Children Who Did and Did Not Meet the Age-Appropriate Developmental Milestones (n=56)**

Overall Baseline Annual Assessment (N=53)				
	Children Who Did Not Meet Their Age-Appropriate Developmental Milestones		Children Who Did Meet Their Age-Appropriate Developmental Milestones	
	Valid Percents	N	Valid Percents	N
Communication	15.1	8	84.9	45
Gross Motor	5.7	3	94.3	50
Fine Motor	20.8	11	79.2	42
Problem Solving	11.3	6	88.7	47
Personal-Social	9.4	5	90.6	48

*Note: Missing Data for the following Milestones: Communication (n=3, 5.4%), Gross Motor (n=3, 5.4%), Fine Motor (n=3, 5.4%), Problem Solving (n=3, 5.4%) Personal-Social (n=3, 5.4%)*

Table 8 below shows the extent to which those children who were discharged from specialized foster care services and completed the Ages & Stages Questionnaire did or did not meet specific developmental milestones. Since not all children had completed the program, this represents a subsample of all children and families served. As is shown in Table 8, the great majority of children sustained developmental gains they had demonstrated at the baseline assessment (73.7% to 84.2%). In addition, meaningful percentages of children met new developmental milestones at the final assessment after not having met those milestones at the baseline assessment (5.3% out of 10.6%, 5.3% out of 5.3%, 10.5% out of 10.5%, 5.3% out of 10.6%, 5.3% out of 5.3%). However, a small percentage of children remained at sub-typical development at the final assessment (5.3%), and a significant percentage of children lost developmental gains observed at baseline (ranging from 10.5% to 15.8%). Overall, children were found to be challenged most in meeting developmental milestones for communication skills at both the baseline and final assessment, and least challenged by meeting milestones for gross motor skills and personal-social skills.

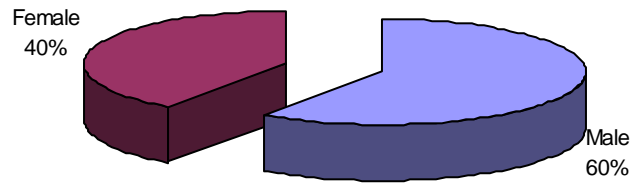
**SFC Table 8. Ages & Stages – Subsample Comparison of Children Experiencing Changes in ASQ Domains (n=56)**

	Subset of Overall Sample: Includes All Cases that have a Baseline Annual Assessment and a Final Annual Assessment					
	Percent of Children Who <i>Did Not</i> Meet Their Age-Appropriate Developmental Milestones at the Annual Baseline Assessment			Percent of Children Who <i>Did</i> Meet Age-Appropriate Developmental Milestones at the Annual Baseline Assessment		
	Annual Baseline Assessment	Final Annual Assessment*		Annual Baseline Assessment	Final Annual Assessment*	
		Met New Developmental Milestones	Remained at Sub-typical development		Sustained Developmental Gains	Lost Developmental Gains
Communication	10.6	5.3	5.3	89.5	73.7	15.8
Gross Motor	5.3	5.3	0	94.7	84.2	10.5
Fine Motor	10.5	10.5	0	89.5	78.9	10.5
Problem Solving	10.6	5.3	5.3	89.5	78.9	10.5
Personal-Social	5.3	5.3	0	94.7	84.2	10.5

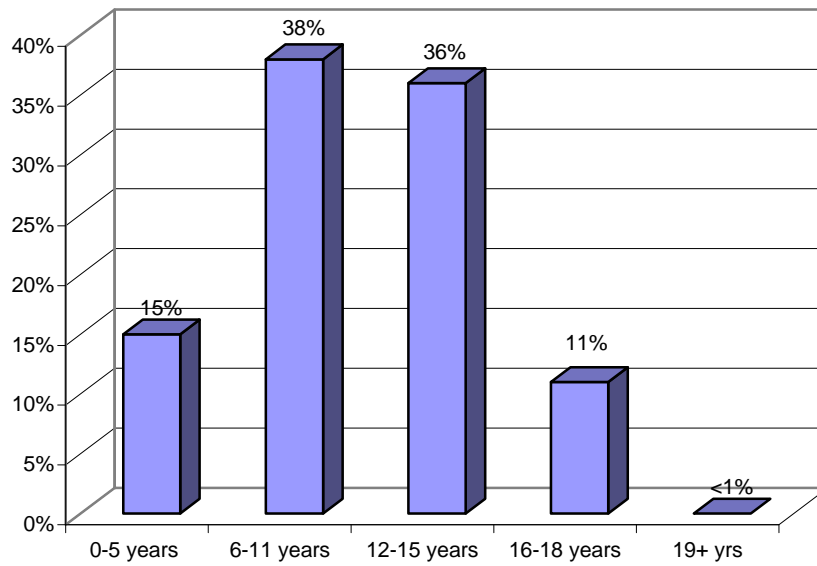
*Note: Missing Data for the following Milestones: Communication (n=37, 66.1%) Gross Motor (n=37, 66.1%), Fine Motor (n=37, 66.1%), Problem Solving (n=37, 66.1%), Personal-Social (n=37, 66.1%)*

## **Children's Intensive Services (CIS)**

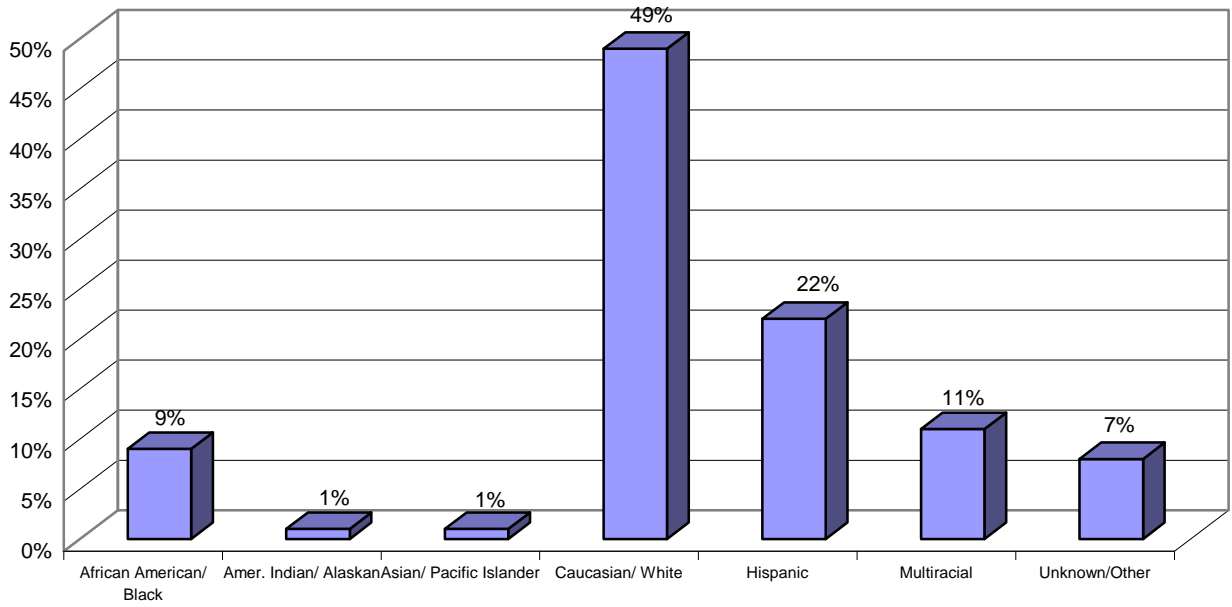
**CIS Figure 1. Gender of Children and Youth Served (n=3189)**



**CIS Figure 2. Age Range of Children and Youth Served (n=3189)**



**CIS Figure 3. Race and Ethnicity of Children and Youth Served (n=3189)**



**CIS Table 1. Frequency of Axis IV Diagnoses Domains (n=3189)**

<b>Diagnoses</b>	<b>N</b>	<b>%</b>
Problems With Primary Support Group	2,740	90
Problems Related to the Social Environment	2,184	71
Educational Problems	2,361	78
Occupational Problems	108	4
Housing Problems	452	15
Economic Problems	763	25
Problems With Access to Health Care Services	133	4
Problems Related to Interaction With the Legal System/Crime	558	18
Other Psychosocial and Environmental Problems	1,118	37

*Note: Cumulative percents exceed 100%, as multiple diagnoses may be present; missing data (between 121, 3.8% and 199, 6.2% children missing data, depending on the diagnoses)*

**CIS Table 2. Discharge Status of Children and Youth Served (n=3,189)**

<b>Discharge Status</b>	<b>N</b>	<b>%</b>
<i>Children Discharged</i>	<i>1,984</i>	<i>62</i>
Successful Completion – CIS Goals Met	762	41
Mutual Discharge – Goals NOT Fully Met	313	17
Client Withdrew WITH Notice	162	9
Client Moved Out of Area	90	5
Client Withdrew WITHOUT Notice	156	8
Change In Insurance Eligibility	40	2
Client’s Behaviors Necessitated More Intensive Services	119	6
Client Aged out of Program	17	1
Client Adjudicated Out of the Program	14	1
Other	196	11

*Note: Valid percents reported (n= 115, 5.8% children missing data).*

**CIS Table 3. Discharge Referral of Children and Youth Served and Discharged (n=3,189)**

<b>Discharge Referral</b>	<b>N</b>	<b>%</b>
<i>Children Discharged</i>	1,984	62
Outpatient Medication Only – CIS Program Psychiatrist or Clinical Nurse Specialist	186	10
Outpatient Medication Only – Psychiatrist or Clinical Nurse Specialist In Private Practice or Another Program	53	3
Outpatient Medication Only – Primary Care Clinician will Prescribe Medications	51	3
Outpatient Therapy Only	243	13
Outpatient Therapy and Medication	315	17
Enhanced/Intensive Outpatient/Referral to Commercial CFIT (only when DISSTAT above is #7 or #8)	36	2
Transfer to Another CIS Program	68	4
Residential Program	61	3
Partial Hospitalization	8	<1
Inpatient Hospitalization	18	1
No Follow-up Services Recommended	472	26
Services Recommended but Family Declined to Pursue Follow-up Services	298	17

*Note: Valid percents reported (n= 175, 8.8% children missing data).*

**CIS Table 4. Discharge Placement (n=3,189)**

<b>Discharge Placement</b>	<b>N</b>	<b>%</b>
<i>Children Discharged</i>	1,984	62
Home With Parent	1438	77
Home With Relatives/Guardian	137	7
Kinship Foster Care	34	2
Contracted Foster Care	41	2
Treatment Foster Care	19	1
Residential Treatment Program – Group Home	92	5
Inpatient Psychiatric Hospital	21	1
Shelter – Homeless, Family and Youth	17	1
Rhode Island Training School (RITS)	9	1
Independent living Program	1	<1
Living Independently	6	<1
Other/Unknown	61	3

*Note: Valid percents reported (n= 108, 5.4% children missing data).*

## Child and Youth Outcomes

### Functioning & Symptoms

Global functioning for each child before and after receipt of CIS is assessed through the use of the Modified Children's Global Assessment of functioning Scale (M-CGAS). The MCGAS provides a rating score from 1 (lowest) to 100 (highest) of current functioning of the child. Scores were available for 1,725 of the 1,984 (87%) children and youth who were discharged from the program. As shown below in Table 5, comparisons between children's average initial scores and their current scores show that current scores are significantly higher. This difference is highly statistically significant, indicating that children and youth improve in their global functioning following the receipt of CIS.

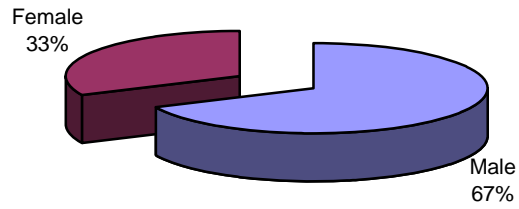
**CIS Table 5. Children and Youth's M-CGAS Scores and Changes Over Time (n=1725)**

FY06 Overall		
	Mean	SD
CGAS Admissions	42.79	5.25
CGAS Discharges	47.49	8.12
CGAS Difference***	4.7	7.45

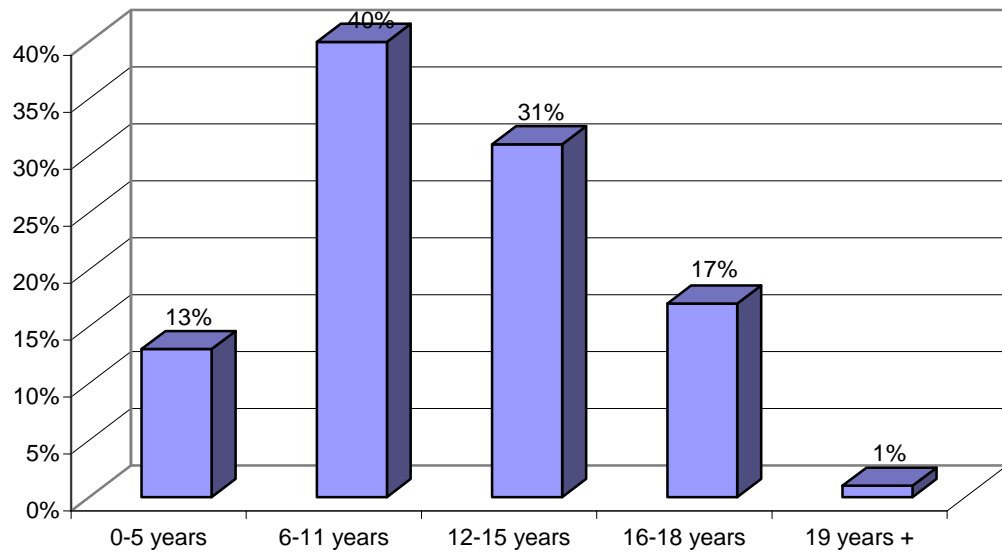
Note: \* $P < .05$ , \*\* $P < .01$ , \*\*\* $P < .001$

## **Child & Adolescent Service System Program (CASSP)**

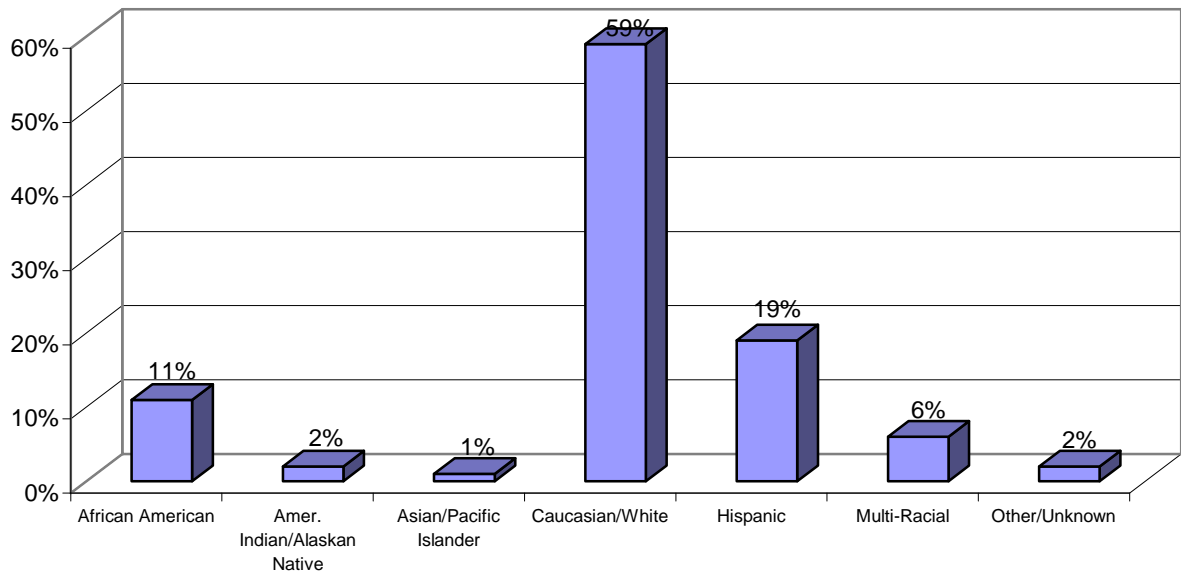
**CASSP Figure 1. Gender of Children and Youth Served (N=1883)**



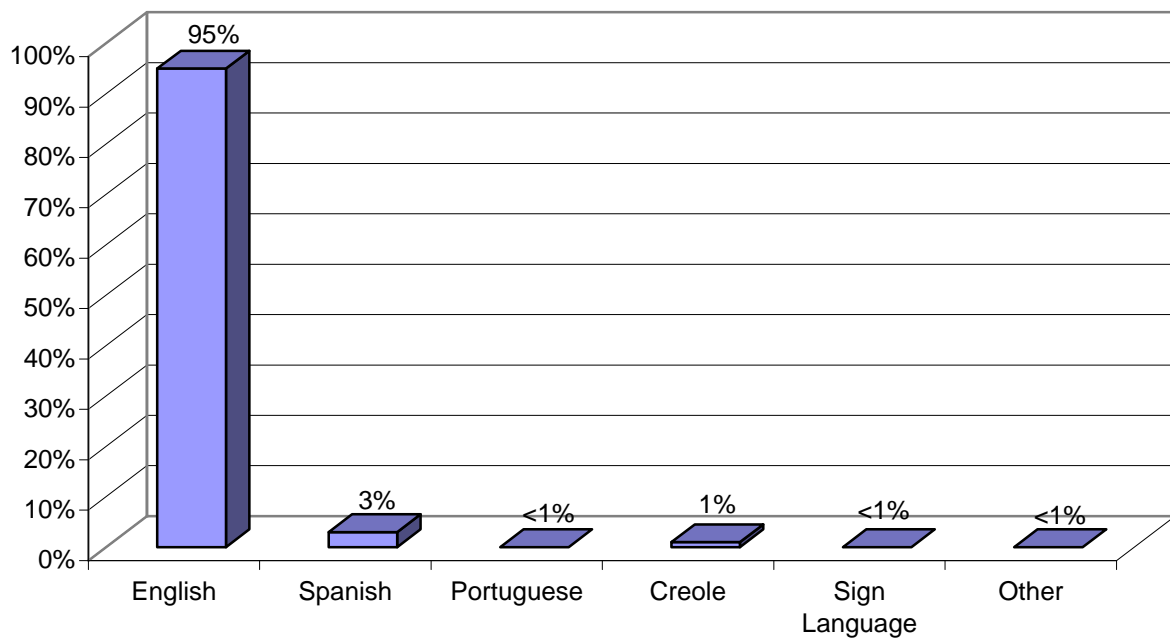
**CASSP Figure 2. Age Range of Children and Youth Served (N=1883)**



**CASSP Figure 3. Race and Ethnicity of Children and Youth Served (N=1883)**



**CASSP Figure 4. Primary Language of Children and Youth Served (n=1883)**



**CASSP Table 1. Ten Most Frequent Presenting Problems of Children and Youth Served (n=1883)**

	<b>Child Presenting Problems</b>	<b>Percent</b>
<b>1</b>	Behavioral Problems	75
<b>2</b>	Anger/Aggression	59
<b>3</b>	School Problem/Issue	52
<b>4</b>	Anxiety	49
<b>5</b>	Hyperactivity/Attention Deficit	48
<b>6</b>	Family Violence/Stress	47
<b>7</b>	Mental Health Problem	39
<b>8</b>	Depression/Withdrawal	37
<b>9</b>	Relationship Problem/Issue	35
<b>10</b>	Violent Behavior	27

*Note: Valid percents reported; Cumulative percents exceed 100%, as multiple problems may be present.*

**CASSP Table 2. Discharge Reasons of Children and Youth Served and Discharged (n=1883)**

<b>Discharge Reasons</b>	<b>N</b>	<b>%</b>
<i>Children Discharged</i>	499	27
5/10 Days Notice	80	16
Adjudicated/Re-Offended	15	3
Child Aged Out of Program	1	<1
Court Ordered	0	0
Goals Accomplished	166	33
Left Without Notice/AMA/AWOL	17	3
Moved Out of State/Area	36	7
Refused Services	47	9
Time-Limit Reached	44	9
Other	93	19

*Note: Valid percents reported.*

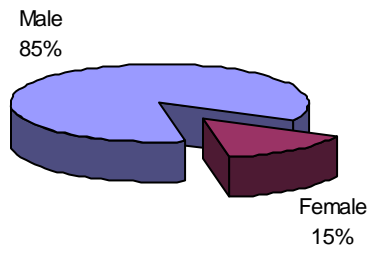
**CASSP Table 3.: Discharge Placement of Children and Youth Served and Discharged (n=1883)**

<b>Discharge Placement</b>	<b>N</b>	<b>%</b>
<i>Children Discharged</i>	499	27
Adult Corrections	1	<1
CIS	1	<1
DCYF-DAS Evaluation	0	0
DCYF- Foster Care	3	1
Emancipation/Adoption	0	0
Family Court	1	<1
Group Home	5	1
Home- Parent/Guardian	363	75
Home- Relatives	24	5
Job Corps	2	<1
More Intensive Program	1	<1
Mental Health Services	0	0
Psychiatric Hospitalization	2	<1
Residential Placement	9	2
Shelter	1	<1
Specialized Foster Care	1	<1
Supervised Ind. Living	3	1
Training School (RITS)	23	5
Other	45	9

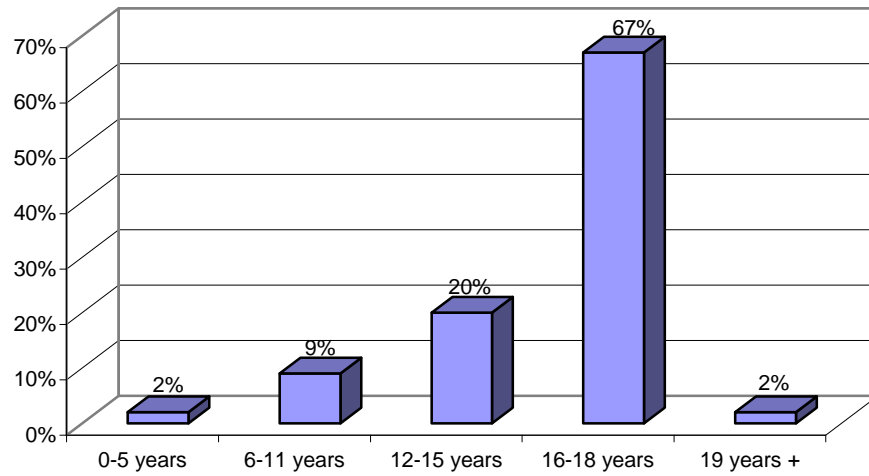
*Note: Valid percents reported. Discharge Placement Missing (n=14)*

## **Project HOPE**

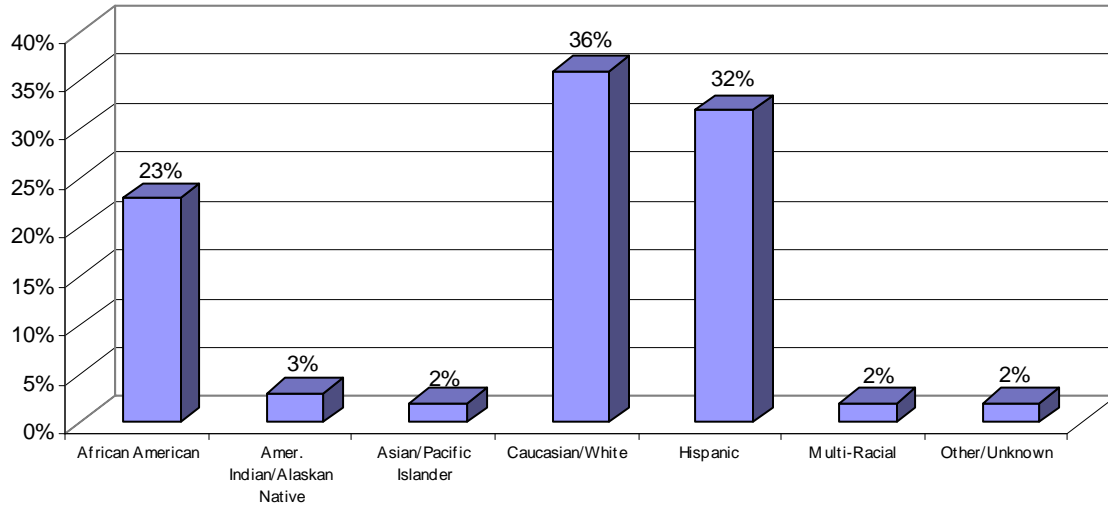
**HOPE Figure 1. Gender of Children and Youth Served (n=258)**



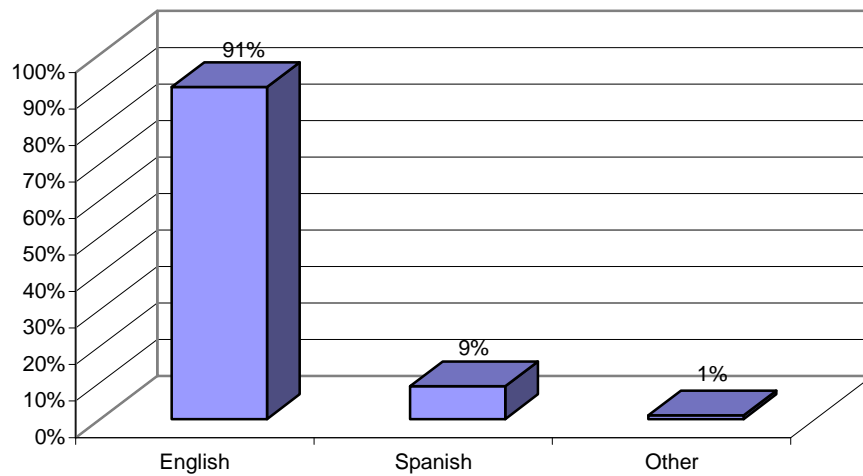
**HOPE Figure 2. Age Range of Children and Youth Served (n=258)**



**HOPE Figure 3. Race and Ethnicity of Children and Youth Served (n=258)**



**HOPE Figure 4. Primary Language of Children and Youth Served (n=258)**



**HOPE Table 1. Ten Most Frequent Presenting Problems of Children and Youth Served (n=258)**

	<b>Child Presenting Problems</b>	<b>Percent</b>
<b>1</b>	Criminal/Illegal Activity	73
<b>2</b>	Behavioral Problems	72
<b>3</b>	Anger/Aggression	57
<b>4</b>	Alcohol/Drug Use/Abuse	50
<b>5</b>	Delinquency	44
<b>6</b>	School Problem/Issue	43
<b>7</b>	Out of Parental Control	24
<b>8</b>	Relationship Problem/Issue	24
<b>9</b>	Family Violence/Stress	22
<b>10</b>	Hyperactivity/Attention Deficit	22

*Note: Valid percents reported; Cumulative percents exceed 100%, as multiple problems may be present.*

**HOPE Table 2. Discharge Reasons of Children and Youth Served and Discharged (n=258)**

<b>Discharge Reasons</b>	<b>N</b>	<b>%</b>
<i>Children Discharged</i>	81	31
5/10 Days Notice	5	6
Adjudicated/Re-Offended	14	17
Child Aged Out of Program	1	1
Court Ordered	0	0
Goals Accomplished	5	6
Left Without Notice/AMA/AWOL	11	14
Moved Out of State/Area	6	7
Refused Services	15	19
Time-Limit Reached	9	11
Other	15	19

*Note: Valid percents reported.*

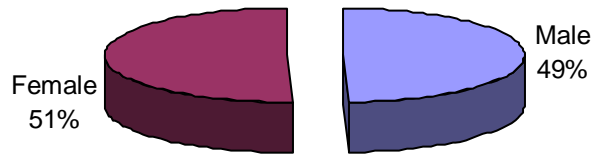
**HOPE Table 3. Discharge Placement of Children and Youth Served and Discharged (n=258)**

<b>Discharge Placement</b>	<b>N</b>	<b>%</b>
<i>Children Discharged</i>	81	31
Adult Corrections	1	1
CIS	0	0
DCYF-DAS Evaluation	0	0
DCYF- Foster Care	0	0
Emancipation/Adoption	0	0
Family Court	0	0
Group Home	3	4
Home- Parent/Guardian	28	35
Home- Relatives	7	9
Job Corps	2	3
More Intensive Program	0	0
Mental Health Services	0	0
Psychiatric Hospitalization	0	0
Residential Placement	2	3
Shelter	0	0
Specialized Foster Care	0	0
Supervised Ind. Living	2	3
Training School (RITS)	18	23
Other	16	20

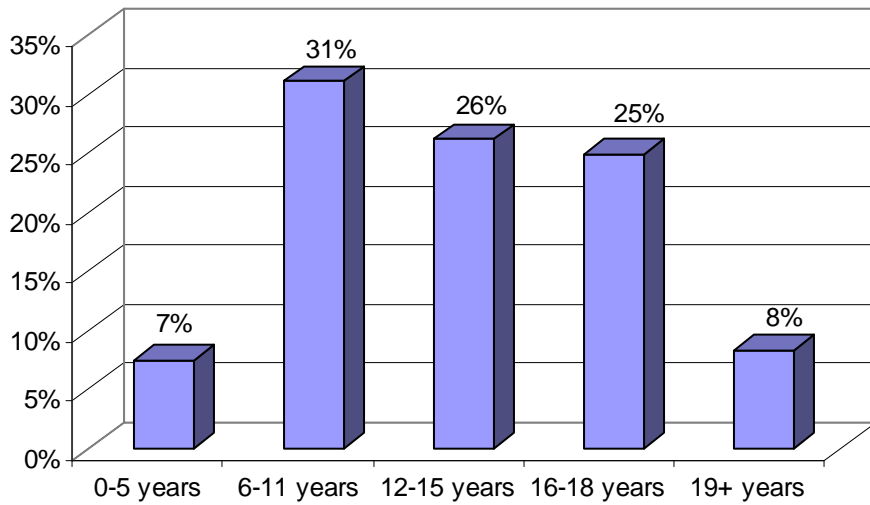
*Note: Valid percents reported.*

## **Parent Support Network (PSN)**

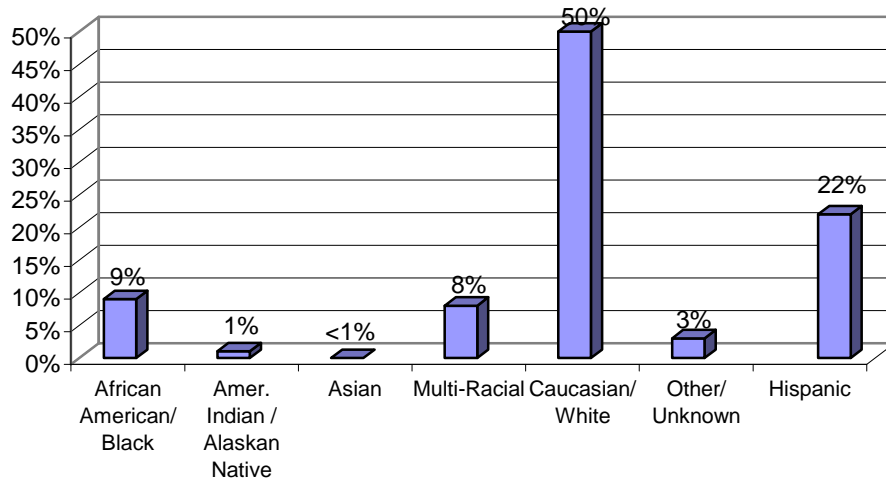
**PSN Figure 1. Gender of Children and Youth Served (n=469)**



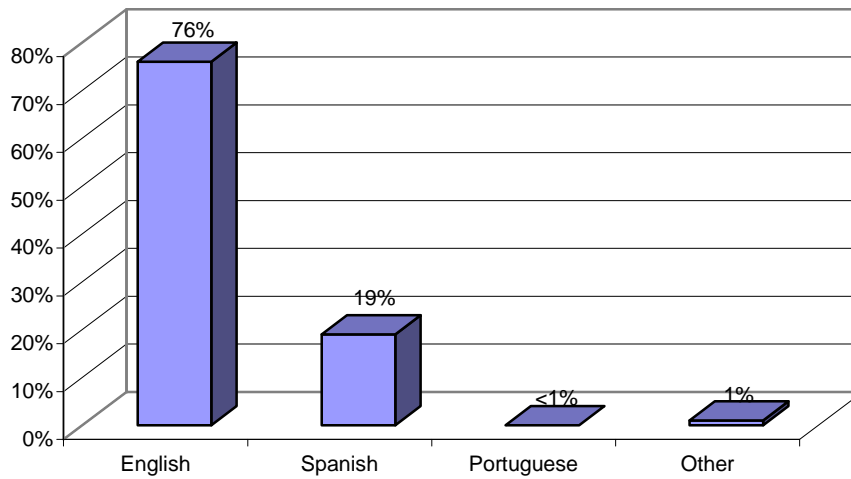
**PSN Figure 2. Age Range of Children and Youth Served (n=469)**



**PSN Figure 3. Race and Ethnicity of Children and Youth Served (n=469)**



**PSN Figure 4. Primary Language of Children and Youth Served (n=469)**



**PSN Table 1. Ten Most Frequent Reasons Families Called (n=216)**

	<b>Family Reasons for Calling</b>	<b>Percent</b>
<b>1</b>	Access to Services	98
<b>2</b>	School Problem/Issue	95
<b>3</b>	Family Stress	76
<b>4</b>	Behavior Problems	70
<b>5</b>	Mental Health Problem/Issue-Other	69
<b>6</b>	Parenting Problem	59
<b>7</b>	Developmental Delay	53
<b>8</b>	Financial Problem/Unemployment	45
<b>9</b>	Cultural Barriers	34
<b>10</b>	Request for Placement	30

*Note: Valid percents reported; Cumulative percents exceed 100%, as multiple reasons for calling may be present.*

**PSN Table 2. Number and Percentage of Discharged Children and Youth (n=469)**

<b>Discharge</b>	<b>N</b>	<b>%</b>
Children Discharged	43	9

*Note: Valid percents reported. Discharge Placement and Reason for PSN not collected*